



Preet Gill  
Regulatory Coordinator

tel 416-495-5499  
EGIRegulatoryProceedings@enbridge.com

Enbridge Gas Inc.  
500 Consumers Road  
North York, Ontario M2J 1P8  
Canada

July 8, 2025

**VIA RESS**

Ritchie Murray  
Acting Registrar  
Ontario Energy Board  
2300 Yonge Street, 27<sup>th</sup> Floor  
P.O. Box 2319  
Toronto, ON M4P 1E4

Dear Ritchie Murray:

**Re: Enbridge Gas Inc. (Enbridge Gas)  
Ontario Energy Board (OEB) File No.: EB-2025-0073  
Mississauga Reinforcement Project – Affidavit of Service**

On June 2, 2025, the OEB issued the Notice of Hearing and Letter of Direction for the above noted proceeding.

As directed by the OEB, enclosed please find the Affidavit of Service which has been filed through the OEB's Regulatory Electronic Submission System.

Please contact the undersigned if you have any questions.

Sincerely,

Preet Gill  
Regulatory Coordinator

**ONTARIO ENERGY BOARD**

**IN THE MATTER OF** the Ontario Energy Board Act, 1998,  
S.O. 1998, c. 15, Schedule B, as amended;

**AND IN THE MATTER OF** an application by Enbridge Gas Inc.  
for an order granting leave to construct natural gas pipelines in  
the Town of Oakville and the City of Mississauga.

**AFFIDAVIT OF SERVICE**

I, Preet Gill of the City of Brampton, make oath and say as follows:

1. I am in the employ of Enbridge Gas Inc. (Enbridge Gas) and as such have knowledge of the matters hereinafter deposed to.
2. On or about June 3, 2025, a search of title forthwith sufficient to determine the owners and encumbrances with land, or registered interests in land directly affected by the construction of the proposed pipeline and related facilities was conducted (included as part of Exhibit C to this Affidavit).
3. Pursuant to the June 2, 2025, Letter of Direction from the Ontario Energy Board (OEB), I caused to be served by courier the Notice of Hearing in (Exhibit A), Enbridge Gas' Application including the exhibits listed below (Exhibit B) upon all directly affected property owners and encumbrances with lands or interest in lands as shown in Exhibit G, Tab 1, Schedule 1, Attachment 3 of Enbridge Gas' pre-filed evidence.
  - Exhibit B-1-1 – Project Need
  - Exhibit C-1-1 – Alternatives
  - Exhibit D-1-1 – Proposed Project
  - Exhibit E-1-1 – Cost & Economics
  - Exhibit F-1-1 – Environmental Matters
  - Exhibit G-1-1 – Lands Matters and Agreements
  - Exhibit H-1-1 – Indigenous Consultation

- Exhibit I-1-1 – Conditions of Approval

4. Attached hereto is proof in the form of Loomis courier confirmation sheets (Exhibit C), that the relevant Notice of Hearing, and Enbridge Gas' Application and evidence was served on those parties noted in the paragraph above as requested by the OEB in the Letter of Direction.
5. As directed by the OEB in the Letter of Direction, attached hereto is proof in the form of an email (Exhibit D) that the relevant Notice of Hearing, and Enbridge Gas' Application and evidence was served on the following parties:
  - a) all property owners and encumbrancers with lands or interest in lands identified in the search of title
  - b) the clerks of the City of Mississauga and Town of Oakville
  - c) all Indigenous communities with lands or interest in the lands directly affected by the proposed project
  - d) the Metis Nations of Ontario, Suite 1100 – 66 Slater Street, Ottawa, ON K1P 5H1
  - e) all affected utilities and railway companies
  - f) members of the Ontario Pipeline Coordinating Committee
  - g) Conservation Halton and Credit Valley Conservation
  - h) Ministry of Indigenous Affairs and First Nations Economic Reconciliation
6. In accordance with the Letter of Direction, I caused a copy of the Notice of Hearing and Application and Evidence to be placed in a prominent place on Enbridge Gas' website. Attached as Exhibit E is proof of the information posted to the website.

SWORN before me in the City of )  
 Toronto, this 8<sup>th</sup> day of )  
 July, 2025. )  
 )

\_\_\_\_\_  
 A Commissioner for taking Affidavits.

*Preet Gill*

\_\_\_\_\_  
 Preet Gill  
 Regulatory Coordinator



## NOTICE OF A HEARING



## AVIS D'AUDIENCE

### Enbridge Gas Inc. has applied for approval to construct approximately 3.1 kilometres of natural gas pipelines in the Town of Oakville and the City of Mississauga

### Enbridge Gas Inc. a déposé une requête en vue d'obtenir l'autorisation de construire des gazoducs d'environ 3,1 kilomètres dans la ville d'Oakville et la ville de Mississauga

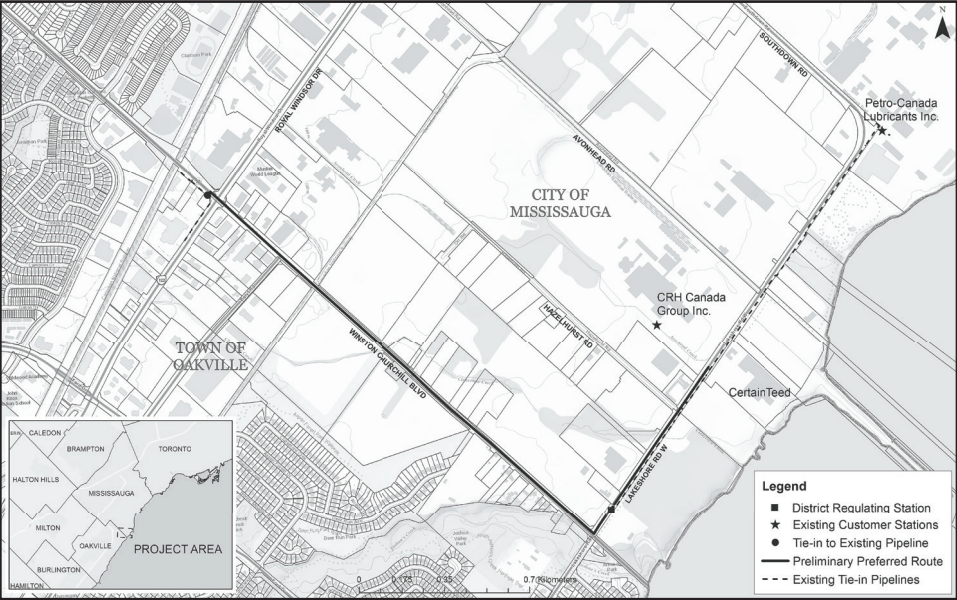
Enbridge Gas Inc. (Enbridge Gas) has applied for approval to construct approximately 3.1 kilometres of natural gas pipelines and related assets to meet the requests of existing customers, Petro-Canada Lubricants Inc., CRH Canada Group Inc., and CertainTeed Canada Inc. for incremental natural gas service (Project). The Project consists of:

- Approximately 3.1 kilometres of NPS 6-inch steel natural gas main pipeline with a maximum operating pressure (MOP) of 1,900 kPa to reinforce the natural gas supply
- Approximately 290 metres of NPS 6-inch steel natural gas service pipeline with a MOP of 1,900 kPa to the CRH Canada Inc. customer station
- Rebuild of the CRH Canada Inc. and Petro-Canada Lubricants Inc. natural gas customer stations
- A new natural gas district regulating station and approximately 20 metres of NPS 4-inch steel natural gas pipeline

Enbridge Gas has also applied for approval of the forms of agreement it will offer to landowners affected by the routing or location of the Project.

Enbridge Gas states that the incremental service requested by the customers supports conversion from other fuel sources and organic business growth. Enbridge Gas states that it has executed long-term firm service contracts with the customers to fully fund the cost of the Project and that there will be no cost impact on existing ratepayers.

The location of the proposed pipelines is shown in the map.



The OEB will also assess:

- The applicant's compliance with the OEB's Environmental Guidelines for the Location, Construction and Operation of Hydrocarbon Pipelines and Facilities in Ontario.
- Whether the duty to consult with Indigenous Communities potentially affected by the proposed pipeline has been discharged with respect to the application.

#### YOU SHOULD KNOW

#### THE ONTARIO ENERGY BOARD WILL HOLD A PUBLIC HEARING

There are three types of OEB Hearings: oral, electronic and written. The applicant has applied for a written hearing. If you think a different hearing type is needed, you can write to us to explain why. During this hearing, we will question the applicant about its case. We will also hear questions and arguments from participants that have registered as Intervenor. After reviewing all the evidence, we will decide whether to approve this application.

#### HAVE YOUR SAY

You have the right to information about this application and to participate in the process. Visit [www.oeb.ca/notice](http://www.oeb.ca/notice) and use file number **EB-2025-0073** to:

- Review the application
- Apply to become an intervenor
- File a letter with your comments

#### IMPORTANT DATES

You must engage with the OEB on or before **June 23, 2025** to:

- Provide input on the hearing type (oral, electronic or written)
- Apply to be an intervenor

If you do not, the hearing will move forward without you, and you will not receive any further notice of the proceeding.

#### PRIVACY

If you write a letter of comment, your name and the content of your letter will be put on the public record and the OEB website. If you are a business or if you apply to become an intervenor, all the information you file will be on the OEB website.

#### LEARN MORE

**Ontario Energy Board**  
T/TTY: 1 877-632-2727  
Monday - Friday: 8:30 AM - 5:00 PM  
[oeb.ca/notice](http://oeb.ca/notice)

**Enbridge Gas Inc.**  
1 866-763-5427  
Monday - Friday: 8:30 AM - 5:00 PM  
[enbridgegas.com](http://enbridgegas.com)

This hearing will be held under section 90(1) and 97 of the **Ontario Energy Board Act, 1998**, S.O. 1998, c.15, Schedule B.

Ce document est aussi disponible en français.



Ontario  
Energy  
Board



## AVIS D'AUDIENCE

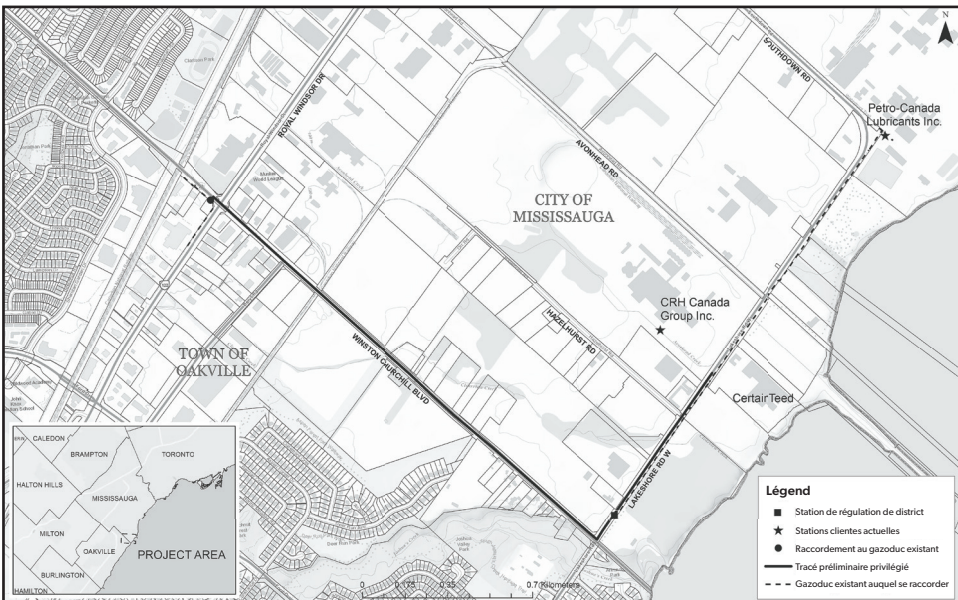
Enbridge Gas Inc. (Enbridge Gas) a déposé une requête en vue d'obtenir l'autorisation de construire des gazoducs d'environ 3,1 kilomètres et des actifs connexes afin de répondre aux demandes des clients existants, soit Petro-Canada Lubricants Inc., CRH Canada Group Inc. et CertainTeed Canada Inc. qui souhaitent obtenir un service de gaz naturel supplémentaire (le projet). Le projet comprend les éléments suivants :

- Un gazoduc principal en acier NPS 6 pouces d'environ 3,1 kilomètres avec une pression maximale de service de 1 900 kPa pour renforcer l'approvisionnement en gaz naturel
- Un gazoduc de service en acier NPS 6 pouces d'environ 290 mètres, avec une pression maximale de service de 1 900 kPa jusqu'à la station cliente de CRH Canada Inc.
- Reconstruction des stations clientes de gaz naturel de CRH Canada Inc. et de Petro-Canada Lubricants Inc.
- Une nouvelle station de régulation de gaz naturel de district et environ 20 mètres de gazoduc en acier NPS 4 pouces

Enbridge Gas a également demandé l'approbation des formes d'entente qu'elle offrira aux propriétaires fonciers touchés par le tracé ou l'emplacement du projet.

Enbridge Gas affirme que le service supplémentaire demandé par les clients soutient la conversion à d'autres sources de carburant et la croissance organique de l'entreprise. Enbridge Gas affirme qu'elle a conclu des contrats de service garanti à long terme avec les clients pour financer entièrement le coût du projet et qu'il n'y aura aucune incidence financière sur les contribuables existants.

L'emplacement des gazoducs proposés est présenté sur la carte.



La CEO évaluera également :

- Le respect par le demandeur des directives environnementales de la CEO concernant l'emplacement, la construction et l'exploitation de gazoducs et d'installations de transport d'hydrocarbures en Ontario.
- La question de savoir si le demandeur s'est acquitté de son obligation de consulter les collectivités autochtones susceptibles d'être affectées par le gazoduc proposé.

#### À SAVOIR

#### LA COMMISSION DE L'ÉNERGIE DE L'ONTARIO TIENDRA UNE AUDIENCE PUBLIQUE

Il existe trois types d'audiences à la CEO : les audiences orales, les audiences électroniques et les audiences écrites. Le requérant a demandé une audience écrite. Si vous estimez qu'avoir recours à un autre type d'audience serait préférable, vous pouvez écrire à la CEO pour lui présenter vos arguments. Au cours de cette audience, nous interrogerons le requérant sur son dossier. Nous entendrons également les questions et arguments des participants inscrits en tant qu'intervenants. Après avoir examiné tous les éléments de preuve, nous déciderons d'approuver ou non cette requête.

#### DONNEZ VOTRE AVIS

Vous avez le droit d'être informés au sujet de cette demande et de participer au processus. Visitez le site [www.oeb.ca/fr/demandes](http://www.oeb.ca/fr/demandes) et utilisez le numéro de dossier **EB-2025-0073** pour :

- examiner la demande;
- présenter une demande pour devenir un intervenant;
- envoyer une lettre comportant vos commentaires.

#### DATES IMPORTANTES

Vous devez communiquer avec la CEO au plus tard le **23 juin 2025** afin de :

- fournir des renseignements sur le type d'audience (orale, électronique ou écrite);
- présenter une demande en vue de devenir un intervenant.

À défaut de cela, l'audience se déroulera sans vous et vous ne recevrez plus d'avis dans le cadre de la présente procédure.

#### PROTECTION DES RENSEIGNEMENTS PERSONNELS

Si vous écrivez une lettre de commentaires, votre nom et le contenu de cette lettre seront ajoutés au dossier public et au site Web de la CEO. Si vous êtes une entreprise ou si vous demandez à devenir un intervenant, tous les renseignements que vous déposez seront disponibles sur le site Web de la CEO.

#### EN SAVOIR PLUS

**Commission de l'énergie de l'Ontario**  
T/ATS : 1 877-632-2727  
Du lundi au vendredi, de 8 h 30 à 17 h  
[oeb.ca/fr/demandes/demandes-en-cours](http://oeb.ca/fr/demandes/demandes-en-cours)

**Enbridge Gas Inc.**  
1 866-763-5427  
Du lundi au vendredi, de 8 h 30 à 17 h  
[enbridgegas.com](http://enbridgegas.com)

Cette audience sera tenue en vertu des paragraphes 90(1) et de l'article 97 de la **Loi de 1998 sur la Commission de l'énergie de l'Ontario**, L.O. 1998, chap. 15 (annexe B).

This document is also available in English.



Commission  
de l'énergie  
de l'Ontario



Filed: 2025-05-09  
EB-2025-0073  
Exhibit A  
Tab 2  
Schedule 1  
Page 1 of 3  
Plus Attachment

## ONTARIO ENERGY BOARD

**IN THE MATTER OF** the *Ontario Energy Board Act, 1998*, S.O. 1998, c. 15, Schedule B; and in particular section 90(1) and section 97 thereof;

**AND IN THE MATTER OF** an application by Enbridge Gas Inc. for an order granting leave to construct natural gas pipelines in the Town of Oakville and the City of Mississauga.

### APPLICATION

1. Enbridge Gas Inc. (Enbridge Gas or the Company) hereby applies to the Ontario Energy Board (OEB) pursuant to section 90(1) of the *Ontario Energy Board Act, 1998, S.O. 1998, c. 15, Schedule B* (the Act), for an order granting leave to construct approximately 3.1 km of Nominal Pipe Size (NPS) 6-inch Steel (ST) natural gas main with a design pressure of 1,900 kPa in the Town of Oakville and the City of Mississauga, Ontario to service Petro-Canada Lubricants Inc., CRH Canada Group Inc., and CertainTeed Canada Inc. (the Customers) with their new requested contract parameters with Enbridge Gas.
2. For ease of reference and to assist the OEB with preparation of the notice of application for the proposed Mississauga Reinforcement Project (Project), a map of the proposed facilities is included at Attachment 1 to this Exhibit.
3. Enbridge Gas has Franchise Agreements with the Town of Oakville<sup>1</sup>, City of Mississauga<sup>2</sup>, Peel Region<sup>3</sup>, and Halton Region<sup>4</sup>, and also holds Certificates of

---

<sup>1</sup> Town of Oakville Franchise Agreement – EB-2009-0344 (effective until November 30, 2029).

<sup>2</sup> City of Mississauga Franchise Agreement – EB-2010-0188 (effective until September 15, 2030).

<sup>3</sup> Peel Region Franchise Agreement – EB-2014-0192 (effective until December 12, 2034).

<sup>4</sup> Halton Region Franchise Agreement – EB-2022-0238 (effective until June 14, 2043).

Filed: 2025-05-09

EB-2025-0073

Exhibit A

Tab 2

Schedule 1

Page 2 of 3

Plus Attachment

Public Convenience and Necessity that cover all areas within the Town of Oakville<sup>5</sup> and City of Mississauga<sup>6</sup> within which the Project will be constructed. These franchise agreements and certificates authorize the Company to construct, operate and add to the natural gas system within the Project area.

4. With leave to construct approval from the OEB, construction of the Project is planned to commence in April 2026 and to be placed into service by November 2026. To meet construction timelines, Enbridge Gas respectfully requests the approval of this application by December 2025. The proposed construction schedule can be found at Attachment 4 to Exhibit D, Tab 1, Schedule 1.
5. If the OEB determines that it will conduct a hearing for this application, then Enbridge Gas requests that it proceed by way of written hearing in English.
6. Enbridge Gas requests that the OEB issue the following order(s):
  - (i) Pursuant to section 90(1) of the Act, an order granting leave to construct the Project.
  - (ii) Pursuant to section 97 of the Act, an order approving the forms of easement agreement and temporary land use agreement found at Exhibit G, Tab 1, Schedule 1, Attachments 2 and 3.
7. Enbridge Gas requests that copies of all documents filed with the OEB in connection with this proceeding be served on it and on its counsel, as follows:

---

<sup>5</sup> Town of Oakville Certificate of Public Convenience and Necessity – EB-2024-0256 (issued on November 28, 2024).

<sup>6</sup> City of Mississauga Certificate of Public Convenience and Necessity – EB-2010-0189 (issued on July 8, 2010).

Filed: 2025-05-09  
EB-2025-0073  
Exhibit A  
Tab 2  
Schedule 1  
Page 3 of 3  
Plus Attachment

(a) The Applicant Evan Tomek  
Senior Advisor, Regulatory Applications – Leave  
to Construct

Address: 3840 Rhodes Drive  
P.O. Box 700  
Windsor, ON N9A 6N7

Telephone: (226) 229-9598

Email: [evan.tomek@enbridge.com](mailto:evan.tomek@enbridge.com)  
[EGIRegulatoryProceedings@enbridge.com](mailto:EGIRegulatoryProceedings@enbridge.com)

(b) The Applicant's counsel Tania Persad  
Associate General Counsel  
Enbridge Gas Inc.

Address for personal service 500 Consumers Road  
Toronto, ON M2J 1P8

Mailing Address: P. O. Box 650  
Scarborough, ON M1K 5E3

Telephone: (416)-495-5891

Email: [tania.persad@enbridge.com](mailto:tania.persad@enbridge.com)

DATED at the City of Windsor, Ontario this 9<sup>th</sup> day of May 2025.

**ENBRIDGE GAS INC.**

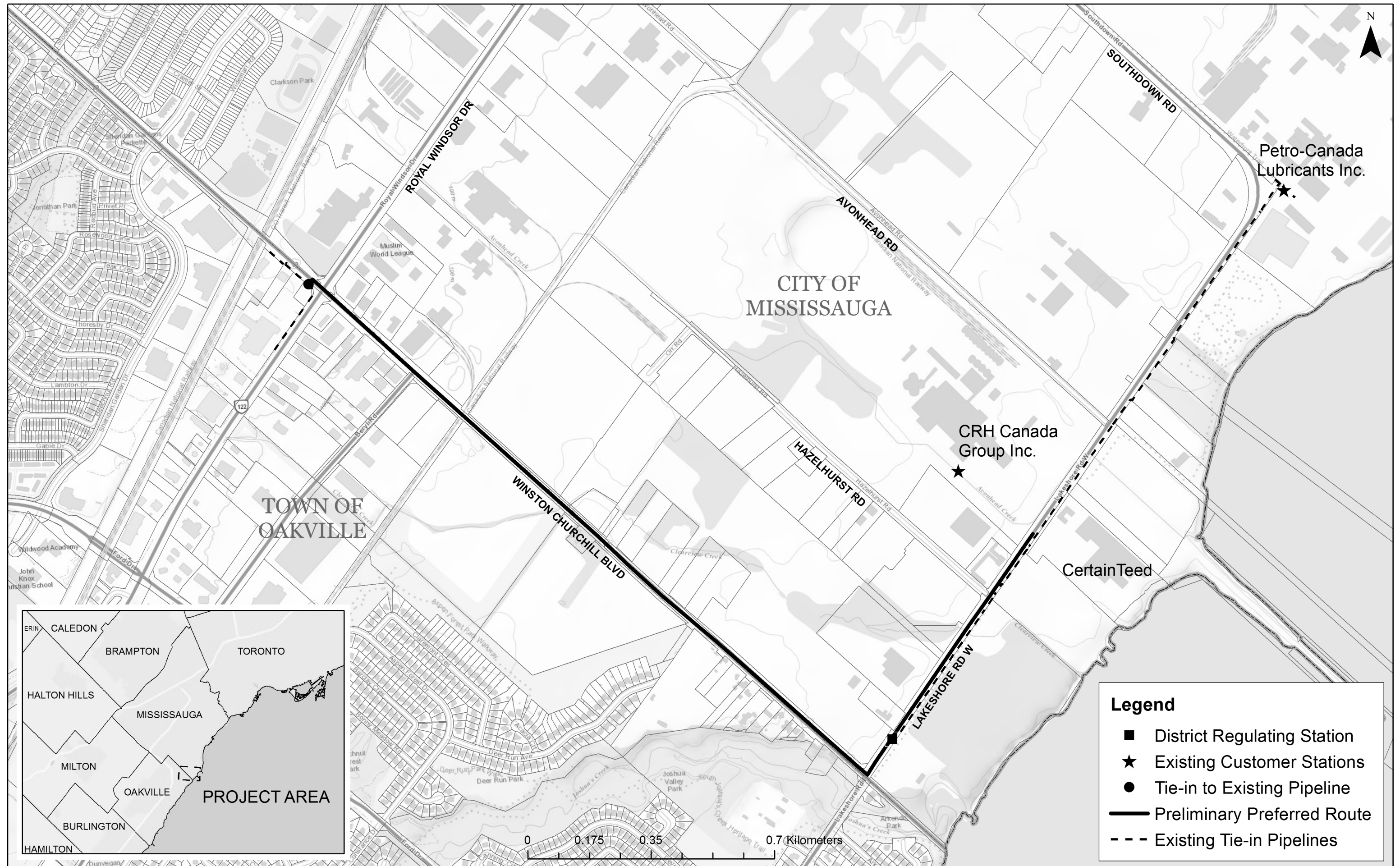
(Original Digitally Signed)

*Evan Tomek*

---

Evan Tomek  
Senior Advisor, Regulatory Applications - Leave to Construct

# Mississauga Reinforcement Project



Last Updated: 3/11/2025



PROJECT NEED

1. As a result of multiple contract rate customers in a similar geographic area seeking natural gas services, Enbridge Gas Inc. (Enbridge Gas) decided to carry out a Non-Binding Expression of Interest and Binding Reverse Open Season for the Oakville to Mississauga area in January 2024, further details about which are provided later in this Exhibit. The purpose of this process was to formally gauge market interest in incremental natural gas service or turnback of existing service in a defined project area of benefit. Bids were received from Petro-Canada Lubricants Inc., CRH Canada Group Inc., and CertainTeed Canada Inc. (collectively, the Customers) resulting in a total incremental firm natural gas service request of 25,902 m<sup>3</sup>/hr with service starting December 1, 2026.
2. The Customer sites are located on Lakeshore Road West and Southdown Road in the City of Mississauga, as shown in Attachment 1 to Exhibit A, Tab 2, Schedule 1. The Customers have existing Large Volume Distribution Contract Rate natural gas services from Enbridge Gas supporting their facility operations, which involve the production of lubricants, cement, and building materials. The incremental firm service requests support conversion from other fuel sources and organic business growth, as outlined in the Customers' letters of support for the Project, which can be found at Attachments 1-3 of this Exhibit.
3. Petro-Canada Lubricants Inc. described the following benefits regarding converting from their current fuel source to natural gas in their letter of support found at Attachment 1 to this Exhibit:

*By providing firm access to natural gas, the Mississauga Reinforcement Project will enable our site to cease the combustion of heavy fuel oil, meeting the Ontario Government's SO<sub>2</sub> emissions limits by January 1, 2027, and*

*providing significant anticipated air emissions reductions such as (relative to a 2022 baseline):*

- *SO<sub>2</sub> emissions reductions by approximately 50%*
- *GHG emissions reduced by approximately 10,000 tonnes/y*
- *Particulate emissions reduced by approximately 75% PM<sub>2.5</sub> by 90%*

4. Ash Grove, a CRH Canada Group Inc. company, in their letter of support found at Attachment 2 to this Exhibit, stated that the firm access to natural gas provided by the proposed project directly supports their sustainability and operational objectives by:

- *Having a positive impact on CO<sub>2</sub> emissions*
- *Securing the long-term viability of our facility and its 170 jobs through reliable energy access*
- *Facilitating the production of low-carbon cement products that significantly contribute to Ontario's construction activity and the over 600,000 construction jobs that it represents.*

5. CertainTeed Canada Inc., in their letter of support found at Attachment 3 to this Exhibit, described the following benefits the proposed project would have on their business:

*The proposed project will help ensure that Enbridge Gas can be part of meeting the energy needs of our business in Mississauga in both the near- and long-term. This energy availability is absolutely necessary to enable our efforts in creating the products that support sustainable building production, including drywall that will be used to build homes across Ontario, which are in extremely high demand.*

6. Petro-Canada Lubricants Inc. and Ash Grove also received letters of support for the Project from various community organizations and provided them to Enbridge Gas. Petro-Canada Lubricants Inc. received letters of support from the Walden Spinney Community, Park Royal Community Association, and Rattray Marsh Protection Association, and Ash Grove received a letter of support from the Owenwood Residents Association. These letters of support can be found at Attachments 4 - 7 to this Exhibit.
7. The Customer sites are located at the extremity of Enbridge Gas's Network 2109, in the area of Southdown Road and Lakeshore Road West in the City of Mississauga. Network 2109 operates at a pressure of 1207 kPa and is fed through a Nominal Pipe Size (NPS) 12-inch natural gas pipeline running along Southdown Road and Erin Mills Parkway in the City of Mississauga. In 2021, a new feed into Network 2109 was added at the intersection of Royal Windsor Drive and Winston Churchill Boulevard in the Town of Oakville and City of Mississauga, supporting additional demand for natural gas along Royal Windsor Drive through an NPS 8-inch natural gas pipeline. Each of the Customers are supplied through a customer station connected to Network 2109. A review of natural gas consumption for the network was completed considering the incremental firm service bids from the Customers. The review identified a system pressure shortfall on design-day indicating the system would be operating below minimum design requirements with the Customers' request for incremental natural gas service. Therefore, a system reinforcement is required to maintain the system at its minimum pressure.
8. To accommodate the Customers' request for incremental natural gas service, Enbridge Gas is proposing to construct the Mississauga Reinforcement Project (the

Project). The Project will consist of the following primary components which are described in more detail at Exhibit D, Tab 1, Schedule 1:

- Installation of approximately 3.1 km of new NPS 6-inch steel natural gas main pipeline at a Maximum Operating Pressure (MOP) of 1,900 kPa;
- Rebuild of the existing natural gas customer station on Petro-Canada Lubricants Inc.'s property, including full telemetry;
- Rebuild of the existing natural gas customer station on CRH Canada Group Inc.'s property, including full telemetry;
- Installation of a new NPS 6-inch steel natural gas service at a MOP of 1,900 kPa to the rebuilt CRH Canada Group Inc. customer station; and
- Installation of a new natural gas District Regulating Station (DRS) and approximately 20 m of NPS 4-inch steel natural gas main.

9. The Project was identified in the Enbridge Gas Asset Management Plan 2025-2034<sup>1</sup> filed with the OEB on November 8, 2024 in the EB-2020-0091 proceeding. The Project is designed to meet the needs of the Customers and is not dependent on any future or previously filed leave to construct application by Enbridge Gas.

10. To inform and solicit input from municipalities, landowners, tenants and the public with respect to the proposed Project, Enbridge Gas:

- Met with affected stakeholders;
- Held public information sessions in the Project area; and
- Mailed a letter summarizing the Project to affected stakeholders.

---

<sup>1</sup> Section 6.1.8.2; 7.1 Appendix A, Table 7.1-1; Appendix A, p. 11.



11. In addition to the letters of support received from the Customers, Enbridge Gas has received letters of support for the Project from the City of Mississauga, Peel Region, Mississauga Board of Trade, and Oakville Chamber of Commerce found at Attachments 8 – 11 to this Exhibit, respectively. Enbridge Gas will continue public consultation throughout the construction of the Project.
12. As discussed in Exhibit E, Enbridge Gas has executed long-term firm service contracts with the Customers to fully fund the cost of the Project as follows, with all contracts effective December 1, 2026:
- Rate 115 contract with Petro-Canada Lubricants Inc.;
  - Rate 110 contract with CRH Canada Group Inc.; and
  - Rate 110 contract with CertainTeed Canada Inc.

The contracts can be found at Attachments 12 - 14 to this Exhibit.

13. In order to meet the service start date, construction of the Project is planned to commence in April 2026 with a target in-service date of November 1, 2026.

*Non-Binding Expression of Interest (EOI) and Binding Reverse Open Season (ROS)*

14. As a result of multiple contract rate customers in a similar geographic area seeking natural gas services, Enbridge Gas decided to carry out an EOI and ROS to formally gauge interest in a defined project area of benefit. The EOI and ROS documents can be found on the Enbridge Gas website<sup>2</sup> and are included at Attachment 15 to this Exhibit and include the project area of benefit.

---

<sup>2</sup> <https://www.enbridgegas.com/business-industrial/commercial-industrial/economic-development>

15. On January 25, 2024, Enbridge Gas sent out the EOI and ROS document to all existing contract rate distribution customers in the proposed project area of benefit. The document was also distributed to larger industrial customers that are non-contract rate in the project area of benefit, and to local municipal economic development staff.
16. The ROS gave the customers the opportunity to de-contract any or all of their existing distribution capacity (firm and interruptible), or to convert existing firm distribution service to interruptible service.
17. The EOI gave the customers the opportunity to bid for new firm distribution service, conversion of existing interruptible distribution service to firm service, or new interruptible distribution service.
18. On and around March 4, 2024, Enbridge Gas sent out reminders of the EOI and ROS to customers. An overall reminder email was also sent out at this time to all customers who received the original email on January 25, 2024.
19. The EOI and ROS closed on March 8, 2024 at 12:00 pm.
20. Three bid forms were received from the Customers for the EOI and 2 were received for the ROS. Of those forms:
  - EOI:
    - i. 1 bidder placed bids for both conversion of existing interruptible distribution service to firm service and new firm distribution service;
    - ii. 1 bidder placed a bid for conversion of existing interruptible distribution service to firm service; and
    - iii. 1 bidder placed a bid for new firm distribution service.
  - ROS:

- i. 2 bidders placed bids for turn back of existing interruptible distribution service.

These bids are summarized in total in Table 1 and Table 2 below:

Table 1: EOI Bid Summary

<b>Type of bid</b>	<b>Bid amount m<sup>3</sup>/hr</b>	<b>Required for date</b>
Conversion of existing interruptible distribution service to firm service	21,785	December 1, 2026
New firm distribution service	4,117	December 1, 2026
<b>TOTAL</b>	<b>25,902</b>	<b>December 1, 2026</b>

Table 2: ROS Bid Summary

<b>Type of bid</b>	<b>Bid amount m<sup>3</sup>/hr</b>	<b>Required for date</b>
Turn back existing interruptible distribution service	17,315	December 1, 2026
<b>TOTAL</b>	<b>17,315</b>	<b>December 1, 2026</b>

## ALTERNATIVES

### Alternatives

1. The sections that follow in this Exhibit outline the facility and non-facility alternatives that were considered to accommodate the Customers' request for incremental natural gas service as defined in the Project Need section of the evidence at Exhibit B, Tab 1, Schedule 1. This Exhibit also outlines the conclusions drawn from the assessment of the facility and non-facility alternatives, including why the proposed Project is the optimal solution to meet the Project Need.

### *Assessment of Facility Alternatives*

2. The facility alternatives considered to meet the Project Need included the following:
  - Rebuild of an existing Enbridge Gas distribution station at the northeast quadrant of the Winston Churchill Boulevard and Royal Windsor Drive intersection; and
  - Installation of a new natural gas pipeline within the municipal road allowance which included three pipeline routing options (Preliminary Preferred Route, Alternative Route 1, and Alternative Route 2) which are discussed in greater detail in the Environmental Report (ER).<sup>1</sup>
3. A third alternative route (Alternative Route 3) was also described in section 4.4 of the ER but was not subject to further evaluation. Alternative Route 3 was initially considered as it was unknown if the CRH Canada Group Inc. customer station could be rebuilt within its existing footprint and therefore a new customer station location was considered on Hazelhurst Drive. This station location would require approximately 0.42 km of NPS 6-inch natural gas distribution pipeline extending

---

<sup>1</sup> Exhibit F, Tab 1, Schedule 1, Attachment 1, Section 4.



along Hazelhurst Drive from the Preliminary Preferred Route pipeline on Lakeshore Road West. Upon further evaluation during the development of the ER, it was determined that the CRH Canada Group Inc. customer station could be rebuilt within its existing footprint and therefore Alternative Route 3 was not subject to further evaluation.

4. The local distribution system (Network 2109) serving the area of benefit was reinforced in 2021 with the construction of a new distribution station, located at the northeast quadrant of the Winston Churchill Boulevard and Royal Windsor Drive intersection. A rebuild of this station to provide increased capacity would be sufficient to reinforce the system and meet the Project Need. However, the station was constructed within the municipal road allowance, and it is not feasible to expand the station at its current location due to limited space within the road allowance and adjacent landowners unwilling to sell Enbridge Gas property based on outreach conducted by Enbridge Gas.
5. Alternative Routes 1 and 2 are shown in Figure C-2 at Appendix C of the ER and include the construction of a new distribution station in either the Town of Oakville or City of Mississauga to replace the existing distribution station located at the Winston Churchill Boulevard and Royal Windsor Drive intersection. Enbridge Gas would be required to purchase land for the new distribution station, which would have a larger footprint than the existing distribution station to provide increased system capacity. Enbridge Gas investigated options to purchase land in the Town of Oakville and City of Mississauga to construct a new distribution station for Alternative Routes 1 and 2. Sites were considered within reasonable proximity to the proposed tie-in locations to minimize the length of pipe required to connect to the station. The area is urban and highly developed, and after extensive outreach it

was determined that no suitable parcels of land were available to be purchased. For this reason, Alternative Routes 1 and 2 were deemed not feasible.

### *Non-Facility Alternatives*

6. The Decision and Order for Enbridge Gas's Integrated Resource Planning Framework Proposal (EB-2020-0091) was issued on July 22, 2021. This Decision was accompanied by an Integrated Resource Planning Framework for Enbridge Gas (IRP Framework).<sup>2</sup> The IRP Framework provides guidance from the OEB about the nature, timing and content of IRP considerations for future identified system needs. The IRP Framework provides Binary Screening Criteria in order to focus IRP assessments on identified system needs where there is reasonable expectation that an IRP alternative could efficiently and economically meet a system need. Accordingly, Enbridge Gas has applied the Binary Screening Criteria and determined that this Project meets the definition of a Customer-Specific Build, as defined in the IRP Framework:<sup>3</sup>

**Customer-Specific Builds** – If an identified system need has been underpinned by a specific customer's (or group of customers') clear request for a facility project and either the choice to pay a Contribution in Aid of Construction or to contract for long-term firm services delivered by such facilities, then an IRP evaluation is not required.

7. As discussed in Exhibit B, Tab 1, Schedule 1, the need for the Project is driven by the request of a specific group of Customers (i.e., Petro-Canada Lubricants Inc., CRH Canada Group Inc., and CertainTeed Canada Inc.) for incremental firm natural gas service for use in their facility operations. The Customers have executed long-term firm service contracts to fully fund the cost of the Project. Accordingly, the Project is exempt from further IRP considerations.

---

<sup>2</sup> EB-2020-0091, Decision and Order, July 22, 2021, Appendix A.

<sup>3</sup> Ibid., p. 10.

### *Conclusions*

8. Based on the above assessment of alternatives, Enbridge Gas determined that the Preliminary Preferred Route (i.e., the proposed Project described in Exhibit D, Tab 1, Schedule 1) is the optimal solution to meet the Project Need for the following reasons:

- A rebuild of the existing Enbridge Gas distribution station located at the northeast quadrant of the Winston Churchill Boulevard and Royal Windsor Drive intersection was not feasible as adjacent landowners were unwilling to sell Enbridge Gas property required to accommodate the station rebuild.
- Despite contacting numerous landowners in the vicinity of the Winston Churchill Boulevard/Royal Windsor Drive intersection, Enbridge Gas was not able to find a landowner willing to sell property for the purpose of building a new distribution station (i.e., a rebuild of the existing station at the aforementioned intersection) on a 40 x 40 metre footprint to allow Alternative Route 1 to proceed. The footprint required to rebuild the existing distribution station at the aforementioned intersection was too large to fit within municipal right-of-way.
- Alternative Route 2 required the installation of an NPS 12-inch pipeline in addition to a new distribution station (i.e., a rebuild of the existing station at the aforementioned intersection), resulting in a significantly higher estimated cost than the Preliminary Preferred Route. Regarding the availability of purchasable land for a new distribution station, Alternate Route 2 faced the same difficulty as Alternate Route 1.
- The Preliminary Preferred Route provides the most direct route within the municipal right-of-way from the tie-in point to the CRH Canada Group Inc. property and did not require the purchase of private property for a new distribution station.

## PROPOSED PROJECT

1. The Preferred Route (PR) for the Project is composed of:
  - i. **Approximately 3.1 km of NPS 6-inch steel natural gas main pipeline with a MOP of 1,900 kPa** to reinforce the natural gas supply to the Customers. The new NPS 6-inch natural gas pipeline will tie-in to the existing Enbridge Gas system near the northwest quadrant of the Royal Windsor Drive and Winston Churchill Boulevard intersection in the Town of Oakville, then run southerly along the west side of Winston Churchill Boulevard until reaching Lakeshore Road, and then run easterly along the south side of Lakeshore Road West until reaching the location across from the CRH Canada Group Inc. (CRH Canada) site.<sup>1</sup>
  - ii. **A NPS 6-inch steel natural gas service with a MOP of 1,900 kPa to the CRH Canada customer station** to supply natural gas to the rebuilt CRH Canada customer station to meet CRH Canada's new contract parameters. This required new natural gas service is considered ancillary, as it needs to be installed to service the demand of one customer (i.e., CRH Canada). The new service is proposed to take-off from the new NPS 6-inch steel natural gas main in the southern right-of-way on Lakeshore Road approximately 200 metres east of Hazelhurst Road and extend approximately 290 metres northwest to the inlet of the CRH Canada customer station (described in bullet iii).<sup>2</sup>

---

<sup>1</sup> Enbridge Gas is seeking an order of the OEB under Section 90 (1) of the OEB Act for leave to construct the proposed pipeline.

<sup>2</sup> Enbridge Gas is not seeking approvals from the OEB to construct the NPS 6-inch steel natural gas service but has included the costs of these facilities as Ancillary Facilities costs within Exhibit E, Tab 1, Schedule 1.



- iii. **Rebuild of the existing natural gas customer station on CRH Canada's property** to accommodate the new natural gas contract parameters with CRH Canada. The new CRH Canada customer station will have an inlet MOP of 1,900 kPa, an inlet minimum operating pressure of 710 kPa, a required load of 16,517 m<sup>3</sup>/hr, an outlet MOP of 414 kPa, and will include full telemetry.<sup>3</sup>
- iv. **Rebuild of the existing natural gas customer station on Petro-Canada Lubricants Inc.'s property** to accommodate the new natural gas contract parameters with Petro-Canada Lubricants Inc. (Petro-Canada). The new Petro-Canada customer station will have an inlet MOP of 1,207 kPa, an inlet minimum operating pressure of 551 kPa, a required load of 30,000 m<sup>3</sup>/h, and include full telemetry and other equipment modifications to the existing customer station.<sup>4</sup>
- v. **A new natural gas District Regulating Station (DRS)** to be installed in the municipal right-of-way of Lakeshore Road West and approximately 20 m of NPS 4-inch steel natural gas main pipeline. This DRS will allow Enbridge Gas to maintain firm natural gas service to the Customers during maintenance activities or emergency events. The 20 m of NPS 4-inch natural gas pipeline will extend from the outlet of the DRS and tie into the nearest connection point on the existing NPS 4-inch steel natural gas main on Lakeshore Road. The DRS will have an inlet MOP of 1,900 kPa, an outlet MOP of 1,207 kPa, and a load of 4,000 m<sup>3</sup>/h.<sup>5</sup>

---

<sup>3</sup> Enbridge Gas is not seeking approvals from the OEB to rebuild the existing natural gas customer station but has included the costs of these facilities as Ancillary Facilities costs within Exhibit E, Tab 1, Schedule 1.

<sup>4</sup> Ibid.

<sup>5</sup> Enbridge Gas is not seeking approvals from the OEB to install the new DRS and associated NPS 4-inch natural gas pipeline but has included the costs of these facilities as Ancillary Facilities costs within Exhibit E, Tab 1, Schedule 1.

2. A map of the Project can be found at Attachment 1 to Exhibit A, Tab 2, Schedule 1.  
 A map showing the preferred routing for the proposed pipeline can be found at Attachment 1 to Exhibit G, Tab 1, Schedule 1 and Figure C-3 of Appendix C of the ER found at Attachment 1 to Exhibit F, Tab 1, Schedule 1.
3. The pipeline and station requirements for the Project are summarized in Table 1 and discussed in greater detail below.

Table 1: Proposed Facilities

<b>Facility</b>	<b>Approximate Pipeline Length (m)</b>	<b>Nominal Pipe Size (inches)</b>	<b>Material</b>	<b>Pressure (kPa)</b>
Pipe (Main)	3,100	6	Carbon Steel	1,900
	20	4	Carbon Steel	1,207
Pipe (Service to CRH)	290	6	Carbon Steel	1,900
CRH Canada Customer Station	N/A	N/A	N/A	1,900 (Inlet MOP)
Petro-Canada Customer Station	N/A	N/A	N/A	1,207 (Inlet MOP)
DRS	N/A	N/A	N/A	1,900 (Inlet MOP)

#### Design Specifications

4. All design, installation and testing of the proposed pipeline will be done in accordance with the specifications outlined in Enbridge Gas's Construction and Maintenance Manual, and Gas Distribution Engineering GDS Document Library

(Specifications),<sup>6</sup> and with the requirements of *Ontario Regulation 210/01 Oil and Gas Pipeline Systems* under the *Technical Standards and Safety Act, 2000*.

5. The design meets or exceeds the requirements of *CSA Z662 Standard for Oil and Gas Pipeline Systems* (latest edition) (CSA Z662) in accordance with the Technical Standard and Safety Authority (TSSA) Code Adoption Document for Oil and Gas Pipeline Systems, as amended from time to time.
6. The Project is within Class 4 locations, as defined by CSA Z662. Considering future potential development along the route, the Project is designed to meet Class 4 location requirements.
7. The proposed pipeline will be manufactured in accordance with the requirements set out in *CSA Z245.1 Steel Line Pipe Standard for Pipeline Systems and Materials* (latest edition). The design and pipeline parameters for the Project are set out in Table 2 and Table 3.

Table 2: NPS 6 Steel Pipeline Design Specifications

Description	Design Specification	Unit
External Diameter (OD)	168.3	mm
Wall Thickness	4.8	mm
Pipe Grade	359	MPa
Material Specification	CSA Z245.1	-
Material Toughness	Cat I	-
Coating Type	ARO/FBE or YJ	
Material Designation	Steel	-
Cathodic Protection	Galvanic or impressed current	

---

<sup>6</sup> The Specifications meet or exceed the requirements of *CSA Z662 – Oil and Gas Pipeline System standard and Ontario Regulation 210/01, Oil and Gas Pipeline Systems*.

<b><u>Components</u></b>		
Fittings	CSA Z245.11	-
Flanges	CSA Z245.12	-
Valves	CSA Z245.15	-
<b><u>Design Data</u></b>		
Class Location	4	-
Design Pressure (DP)	1,900	kPa
Hoop Stress at Design Pressure per % SMYS	12.7%	-
Maximum Operating Pressure (MOP)	1,900	kPa
Hoop Stress at MOP per % SMYS	12.7%	-
Minimum Depth of Cover	1.2m and for further details please refer to the Specifications.	m
Method of Construction	Trenchless / Open Cut	-
<b><u>Concurrent Strength and Leak Test Data</u></b>		
Test Medium	Air or Nitrogen	-
Test Pressure (Min/Max)	2660 / 2850	kPa
Hoop Stress at Strength Test per % SMYS	19%	-
Test Duration	4	Hrs

**Table 3: NPS 4 Steel Pipeline Design Specifications<sup>7</sup>**

<b>Description</b>	<b>Design Specification</b>	<b>Unit</b>
External Diameter (OD)	114.3	mm
Wall Thickness	4.8	mm
Pipe Grade	359	MPa
Material Specification	CSA Z245.1	-
Material Toughness	Cat I	-
Coating Type	ARO/FBE or YJ	
Material Designation	Steel	-
Cathodic Protection	Galvanic or impressed current	
<b><u>Components</u></b>		
Fittings	CSA Z245.11	-
Flanges	CSA Z245.12	-
Valves	CSA Z245.15	-

<sup>7</sup> The proposed NPS 4 pipeline outlined in Table 3 will connect the outlet pipe from the new DRS to the existing Legacy Enbridge Gas NPS 4-inch natural gas pipeline on Lakeshore Road West. The proposed DRS location is tentative, and it is estimated approximately 20 m of NPS 4-inch pipe will be required.

<b><u>Design Data</u></b>		
Class Location	4	-
Design Pressure (DP)	1,207	kPa
Hoop Stress at Design Pressure per % SMYS	5.5%	-
Maximum Operating Pressure (MOP)	1,207	kPa
Hoop Stress at MOP per % SMYS	5.5%	-
Minimum Depth of Cover	1.2m and for further details please refer to the Specifications.	m
Method of Construction	Trenchless / Open Cut	-
<b><u>Concurrent Strength and Leak Test Data</u></b>		
Test Medium	Air or Nitrogen	-
Test Pressure (Min/Max)	1690 / 1811	kPa
Hoop Stress at Strength Test per % SMYS	8.2%	-
Test Duration	4	Hrs

8. The proposed pipelines will be concurrently strength and leak tested after the installation of the pipe, for a minimum duration as shown in Table 2 and Table 3.

#### **Pipeline Construction**

9. Enbridge Gas will construct the Project using qualified construction contractors and Enbridge Gas employees. Each of these groups will follow approved construction Specifications, which will be adjusted to reflect site-specific conditions for the Project as per the findings in the ER discussed in Exhibit F, Tab 1, Schedule 1. All construction, installation and testing of the Project will be witnessed and certified by a valid Gas Pipeline Inspection Certificate Holder or Professional Engineer and in accordance with the *CSA Z662 – Oil and Gas Pipeline Systems standard* and *Ontario Regulation 210/01, Oil and Gas Pipeline Systems*.
10. The method of construction will be a combination of open trench and trenchless technology. Restoration and monitoring will be conducted to ensure successful environmental mitigation for the Project.

11. Pipeline construction is divided into several crews that create a mobile assembly line. Each crew performs a different function, with a finished product left behind when the last crew has completed its work.
12. Contractors are required to erect safety barricades, fences, signs or flashers, or to use flag persons as may be appropriate, around any excavation across or along roads.
13. Construction of the pipeline generally includes the activities set out at Exhibit D, Tab 2, Schedule 1. Enbridge Gas proposes to install the proposed pipeline using trench and trenchless methods (directional drilling or jack and bore).

#### TSSA Correspondence

14. Enbridge Gas filed an application with the TSSA on January 22, 2025, and the TSSA confirmed receipt of the application on February 13, 2025. Enbridge Gas's application and the TSSA's confirmation can be found at Attachment 1 and Attachment 2 to this Exhibit, respectively. The TSSA is currently reviewing the application and correspondence related to the review can be found at Attachment 3 to this Exhibit. Enbridge Gas does not anticipate the TSSA will have any objections to the Project after their review of the application is complete.

#### Project Timing

15. Pending OEB approval, Enbridge Gas expects to commence construction of the Project in April 2026 to meet the required in-service date of November 1, 2026. A proposed construction schedule is set out at Attachment 4 to this Exhibit.

## COST AND ECONOMICS

### Project Cost

1. The total cost for the Project is estimated to be approximately \$18.97 million as set out in Table 1 below.

Table 1: Estimated Project Costs (\$CAD)

<u>Item No.</u>	<u>Description</u>	<u>Pipeline Costs</u>	<u>Ancillary Costs<sup>1</sup></u>	<u>Total Costs</u>
1	Material Costs	174,215	731,129	905,344
2	Contractor Labour Costs	5,366,310	2,110,338	7,476,648
3	Internal Labour	149,100	49,700	198,800
4	Outside Services	1,054,681	50,214	1,104,895
5	External Permitting & Land	1,830,308	96,332	1,926,640
6	Contingency Costs	2,141,441	758,691	2,900,132
<b>7</b>	<b>Direct Capital Cost</b>	<b>10,716,055</b>	<b>3,796,404</b>	<b>14,512,459</b>
8	Indirect Overheads	3,047,616	1,015,872	4,063,488
9	Interest During Construction	192,889	68,335	261,224
10	Loadings	62,921	20,973	83,894
11	Dismantlement	0	45,000	45,000
<b>12</b>	<b>Total Project Costs</b>	<b>14,019,481</b>	<b>4,946,584</b>	<b>18,966,065</b>

2. The cost estimate set out above includes a 25% contingency applied to all direct capital costs to reflect the current (preliminary) design stage of the Project. This contingency amount has been calculated based on the risk profile of the Project and is consistent with contingency amounts calculated for similar projects completed by Enbridge Gas and approved by the OEB in the past.<sup>2</sup>

<sup>1</sup> Ancillary costs include customer station rebuilds, installation of the new DRS and NPS 4-inch natural gas pipeline, and the new CRH Canada natural gas service.

<sup>2</sup> For example, recent Enbridge Gas projects with similar contingency include the Watford Pipeline Project (EB-2023-0175) and the Ontario Line - Overlea Station Relocation Project (EB-2024-0250).

### Project Cost Comparison

3. The estimated project costs of recent pipeline projects of comparable scopes are set out in Table 2. Importantly, no two facility projects are directly comparable.

There are multiple unique factors and project characteristics that influence costs, including but not limited to:

- **Complexity of Construction** – The unique location and condition of project construction (e.g., greenfield, geotechnical ground conditions, environmentally sensitive areas, dense urban areas, established agricultural lands, road allowance, watercourse crossings, etc.) affects the method and complexity of construction. Generally, the higher the construction complexity, the greater the duration and cost to construct.
- **Timing of Construction** – Depending on the season during which construction occurs (i.e., summer conditions compared to winter conditions) costs can vary widely. Further, if project construction schedules are condensed for any reason (e.g., regulatory delay, inclement weather, labour constraints etc.) costs can escalate to achieve facility in-service dates that are required for operational and/or commercial purposes.
- **System Planning Characteristics** – Differences in facility design and MOP results in differences in materials, as well as construction, welding, and testing requirements.
- **Contracting** – Depending on the contracting and payment structure, interest during construction is not applied to all projects in the same way.



Table 2: Project Cost Comparison

	<b>Mississauga Reinforcement Project</b>	<b>Watford Pipeline Project<sup>3</sup></b>	<b>Ridge Landfill RNG Project<sup>4</sup></b>
<b>Facility Description</b>	<ul style="list-style-type: none"> <li>• 3.1 km NPS 6 1,900 kPa</li> <li>• Two customer station rebuilds</li> <li>• New District Regulating Station</li> </ul>	<ul style="list-style-type: none"> <li>• 15.3 km NPS 6 6,160 kPa</li> <li>• New RNG Injection Station</li> </ul>	<ul style="list-style-type: none"> <li>• 5.7 km NPS 4 6,040 kPa</li> <li>• New RNG Injection Station</li> </ul>
<b>Material Costs</b>	\$174,215	\$3,512,922	\$ 614,615
<b>Labour Costs</b>	\$5,515,410	\$6,321,435	\$ 5,571,717
<b>External Costs</b>	\$2,884,989	\$2,815,617	\$ 1,429,467
<b>IDC</b>	\$261,224	\$563,474	\$0
<b>Contingency</b>	\$2,202,000	\$3,288,993	\$ 1,142,370
<b>Station Costs</b>	\$3,864,739	\$3,868,800	\$ 2,722,704
<b>Indirect Overheads</b>	\$4,063,488	-	-
<b>Total Project Costs</b>	\$18,966,065	\$20,371,242	\$ 11,480,872

Project Economics

4. As set out in Table 1, the total estimated cost of the Project is \$18.97 million, which includes both the pipeline and ancillary facilities. This cost accounts for materials, labour, external costs, contingencies, dismantlement, loadings, interest during construction (IDC) and indirect overheads. Indirect overheads are excluded for the purpose of the feasibility analysis, resulting in a \$14.9 million total cost for feasibility.<sup>5</sup>
5. An economic analysis has been completed in accordance with the OEB's recommendations in its E.B.O. 188 Report on Natural Gas System Expansion. The Discounted Cash Flow (DCF) analysis for the Project has been prepared based on

---

<sup>3</sup> EB-2023-0175.

<sup>4</sup> EB-2022-0203.

<sup>5</sup> Only incremental overheads are considered in the feasibility analysis for capital investments, per E.B.O. 188, Final Report of the Board, Appendix B, section 2.1.

the Company's latest feasibility parameters (i.e., long-term debt rates, discount rates, tax rates). Attachment 1 to this Exhibit shows the key inputs, parameters and assumptions used in completing the DCF analysis. A complete DCF analysis for the Project is included at Attachment 2 to this Exhibit. These schedules indicate that the Project has a Net Present Value (NPV) of \$2,545,670 and a Profitability Index (PI) of 1.17.

6. A 20-year project time horizon has been applied in accordance with E.B.O. 188 guidelines. This period covers revenues, and ongoing expenses including incremental operating and maintenance costs, property tax and income tax. Incremental cash inflows represent distribution revenues received from the three customers served by the Project, over the respective term of each contract (see Attachment 2 to this Exhibit).
7. Based on the above, Enbridge Gas submits that the Project is economically feasible as it is fully supported by the forecast Customers and will not result in additional costs borne by existing ratepayers.

## ENVIRONMENTAL MATTERS

### Environmental Report

1. Enbridge Gas retained Stantec Consulting Ltd. (Stantec) to undertake a route evaluation and environmental and socio-economic impact study, which included a cumulative effects assessment, to select the Preferred Route (PR) for the Project. As part of the development of the study, Enbridge Gas and Stantec implemented a consultation program to receive input from interested and potentially affected parties including Indigenous communities. The consultation program input was evaluated and integrated into the study. Mitigation measures designed to minimize environmental and community impacts resulting from construction of the Project were also developed as part of the study.
2. The results of the study are documented in the Environmental Report (ER) entitled *Mississauga Reinforcement Project: Environmental Report* included at Attachment 1 to this Exhibit. The ER conforms to the OEB's *Environmental Guidelines for the Location, Construction and Operation of Hydrocarbon Projects and Facilities in Ontario, 8<sup>th</sup> Edition, 2023* (OEB Guidelines).
3. Enbridge Gas agrees with Stantec's findings.
4. The principal objective of the environmental study was to outline various environmental mitigation and protection measures for the construction and operation of the Project while meeting the intent of the OEB Guidelines. To meet this objective, the environmental study was prepared to:
  - Identify a PR that reduced potential environmental impacts;

- Complete a detailed review of environmental and socio-economic features along the PR and assess the potential environmental impacts of the Project on these features;
  - Establish mitigation and protective measures that may be used to reduce or eliminate potential environmental and socio-economic impacts of the Project;
  - Develop an engagement and consultation program to receive input from interested and potentially affected parties; and
  - Identify any necessary supplemental studies, monitoring, and contingency plans.
5. Details of the environmental study process can be found in Section 1.2.2 of the ER and details of the routing analysis can be found in Section 4 of the ER. Details of the engagement and consultation program can be found in Section 2 of the ER.
6. A Notice of Upcoming Project (NUP) was sent via e-mail to all parties identified on the Indigenous Contact List and government agencies on June 25, 2024. The NUP was emailed to all members listed on the Ontario Pipeline Coordinating Committee (OPCC) and Agency Contact List and mailed to properties located in the Study Area via Canada Post unaddressed ad mail on June 27, 2024. The NUP was also published in the online newspapers InsideHalton.com and Mississauga.com on June 27, 2024. Project Contact Lists can be found in Appendix A.2 of the ER and a copy of the NUP can be found in Appendix A.4 of the ER. The NUP introduced the Project, provided a general map of the Study Area and listed the designated Project contact information.

7. Notice of Study Commencement (NOC), In-Person and Virtual Information Sessions letters for the Project were emailed to all parties identified on the Indigenous Contact List and government agencies on July 9, 2024, and to all parties identified on the OPCC and Agency Contact List on July 11, 2024. Letters were also mailed out to landowners located in the Study Area for the Project via Canada Post on July 11, 2024. Generic copies of the letters noted above can be found in Appendix A.4 of the ER. The letters included a description of the Project, a map of the Study Area for the environmental study, the format and dates of the In-Person and Virtual Information Sessions, and Project contact information. A copy of the NOC can be found in Appendix A.3 of the ER
8. During the consultation process for development of the ER, Enbridge Gas and Stantec received comments from the public, agencies, interest groups, municipal and elected officials and Indigenous groups. Consultation logs can be found in Appendix A.6 of the ER.
9. Additionally, as per the OEB Guidelines, the draft ER was circulated to Indigenous communities and to the OPCC and representatives from federal, provincial, and municipal government agencies and other interested stakeholders via email for their review on January 6, 2025, with comments requested by February 17, 2025. The draft ER was also circulated to Huron-Wendat Nation on March 7, 2025, with comments requested by May 4, 2025. Enbridge Gas commits to addressing comments received from all parties throughout the entirety of the Project. A summary of comments received and subsequent responses related to the review of the draft ER is set out in Appendix A.6 of the ER.

10. The ER identifies one watercourse (Clearview Creek) that will be crossed by the PR during construction. This watercourse will be crossed twice using the horizontal directional drilling method (HDD). Mitigation measures associated with water crossings via HDD can be found in Section 5.2, Table 5.1 of the ER. Any necessary permits will be obtained from Conservation Halton and/or Credit Valley Conservation prior to the start of construction. Measures to protect fish and fish habitat will also be implemented and will meet Fisheries and Oceans Canada requirements.

#### Routing

11. Enbridge Gas retained Stantec to evaluate potential routes for the Project using existing routes, and the consideration of environmental and socio-economic constraints. Details of the routing evaluation can be found in Section 4 of the ER.

#### Mitigation Measures

12. Construction of the Project will be conducted in accordance with Enbridge Gas's Construction and Maintenance Manual, the recommendations in the ER, conditions from agency consultation and approvals, and mitigation objectives desired by Indigenous communities in relation to environmental matters associated with the proposed works. These mitigation measures will be communicated to the construction contractor prior to the commencement of construction of the Project. When required, a qualified Environmental Inspector or suitable representative will be available to assist the Construction Supervisor in seeing that mitigation measures and requirements established by permitting agencies and any OEB conditions of approval are adhered to and that commitments made to the public, Indigenous communities, landowners and agencies are honored. The

Environmental Inspector and/or Project Manager will also mitigate any unforeseen environmental circumstances that arise before, during and after construction.

13. Recommended mitigation measures for potential effects have been developed in the ER to address environmental and socio-economic features found along the PR. A summary of potential effects and recommended mitigation measures and protective measures can be found in Section 5.2, Table 5.1 of the ER.
14. Using the mitigation measures and monitoring and contingency plans found within the ER and additional mitigation measures provided by regulatory agencies and Indigenous communities via the permitting and approval process and consultation, the construction of this Project will have negligible impacts on the environment. No significant environmental or cumulative effects are anticipated from development of the Project.

#### Cultural Heritage Assessment

15. A Cultural Heritage Screening Report was completed for the Project and submitted to the Ministry of Citizenship and Multiculturalism (MCM). The Cultural Heritage Screening Report includes the MCM Cultural Heritage Checklist and is provided in Appendix F of the ER.
16. A Cultural Heritage Assessment Report: Existing Conditions and Preliminary Impact Assessment (CHECPIA) will be completed on the selected PR and submitted to the MCM. Enbridge Gas will adhere to recommendations arising from the CHECPIA.

Archaeological Assessment

17. A Stage 1 Archaeological Assessment (AA) undertaken by Stantec was submitted to the MCM for review on December 5, 2024. The Stage 1 AA can be found in Appendix E of the ER. A Stage 2 AA is recommended based on the findings of the Stage 1 AA. A Stage 2 AA of the PR will be completed and submitted to the MCM for review to be entered into the Ontario Public Register of Archaeological Reports.
18. Indigenous communities will be invited to participate in the field work of the Stage 2 AAs.



## LAND MATTERS AND AGREEMENTS

### Land Requirements

1. Drawings showing the approximate location of the proposed facilities within the public road allowance for the PR are provided at Attachment 1 to this Exhibit. The names and addresses of landowners have been removed from this Attachment to safeguard landowner privacy.
2. The PR for the Project is also summarized in Exhibit D, Tab 1, Schedule 1, and described in more detail in Section 4 of the ER, found at Attachment 1 to Exhibit F, Tab 1, Schedule 1.
3. The PR for the Project is anticipated to follow the public road allowance for the entirety of the proposed pipeline route. It's not anticipated that any permanent easements will be required for the Project.
4. Temporary working areas may be required along the PR where the road allowance is too narrow or confined to facilitate construction and for the construction contractor's laydown yard/work area (location to be confirmed). These areas will be identified with the assistance of the construction contractor and agreements for temporary working rights will be negotiated where required.

### Authorizations and Permits Required

5. Enbridge Gas's preliminary work on the Project has identified the following potential required authorizations:

#### Provincial Authorizations/Approvals

- Ontario Energy Board

- Credit Valley Conservation Authority
- Conservation Halton
- Ministry of Citizenship and Multiculturalism
- Ministry of the Environment, Conservation and Parks
- Ministry of Energy and Mines

#### Municipal Authorizations/Approvals

- City of Mississauga
- Town of Oakville
- Regional Municipality of Halton
- Regional Municipality of Peel

#### Other

- Indigenous engagement
  - Landowner agreements
  - Utility circulation
  - Canadian National Railway crossing agreement
6. Other authorizations, notifications, permits and/or approvals may be required in addition to those identified above.
  7. Enbridge Gas will obtain all required permits, easements and temporary land use agreements if and as required for the route and location of the proposed facilities prior to the commencement of construction.
  8. Attachment 2 to this Exhibit contains the standard form Easement Agreement that will be provided to landowners should it be determined that an easement is

required. This form of agreement was approved by the OEB for use as part of the Company's Ridge Landfill RNG Project (EB-2022-0203).<sup>1</sup>

9. Attachment 3 to this Exhibit contains the standard form Temporary Land Use Agreement that will be provided to landowners should it be determined that temporary working space is required to facilitate construction and for the contractor's laydown yard/work area. This form of agreement was approved by the OEB for use as part of the Company's Ridge Landfill RNG Project (EB-2022-0203).<sup>2</sup>

#### Landowner List

10. Attachment 4 to this Exhibit identifies the directly and indirectly impacted landowners. Indirectly impacted landowners are those landowners with property adjacent to the PR where no land rights are required as part of the proposed Project. Directly impacted landowners are those landowners whose lands are directly impacted by the Project work and therefore are those from which the Company requires land rights for the proposed Project. Enbridge Gas will provide notice of this Application to the directly impacted landowners listed in Attachment 4.

---

<sup>1</sup> EB-2022-0203, Exhibit G, Tab 1, Schedule 1, Attachment 3; and EB-2022-0203, Decision and Order, April 6, 2023, p. 13.

<sup>2</sup> EB-2022-0203, Exhibit G, Tab 1, Schedule 1, Attachment 2; and EB-2022-0203, Decision and Order, April 6, 2023, p. 13.

### INDIGENOUS<sup>1</sup> CONSULTATION

1. Enbridge Gas is committed to creating processes that support meaningful engagement with potentially affected Indigenous groups (First Nations and Métis). Enbridge Gas works to build an understanding of project related interests, ensure regulatory requirements are met, mitigate or avoid project-related impacts on Indigenous interests including rights, and provide mutually beneficial opportunities where possible.
2. Pursuant to the OEB's Guidelines, Enbridge Gas provided the Ontario Ministry of Energy and Electrification (ENERGY) with a description of the Project to determine if there are any duty to consult requirements and, if so, if ENERGY would delegate the procedural aspects of the duty consult to Enbridge Gas. This correspondence, dated March 19, 2024, is set out in Attachment 1 to this Exhibit.
3. On April 19, 2024, Enbridge Gas provided a Project Update Letter to ENERGY that described two alternate routes the Company is considering for the Project in addition to the Preliminary Preferred Route described in the March 19, 2024 Project Description. The Project Update Letter is provided at Attachment 2 to this Exhibit.
4. Enbridge Gas received a letter (Delegation Letter) from ENERGY on May 7, 2024, indicating that ENERGY had delegated the procedural aspects of consultation to Enbridge Gas for the Project. The Delegation Letter identified four Indigenous communities to be consulted. A copy of the Delegation Letter is provided at Attachment 3 to this Exhibit.

---

<sup>1</sup> Enbridge Gas has used the terms "Aboriginal" and "Indigenous" interchangeably in its application. "Indigenous" has the meaning assigned by the definition "aboriginal peoples of Canada" in subsection 35(2) of the *Constitution Act, 1982*.

Filed: 2025-05-09  
EB-2025-0073  
Exhibit H  
Tab 1  
Schedule 1  
Page 2 of 4  
Plus Attachments

5. The Indigenous Consultation Report (ICR) was provided to ENERGY on the date of this filing. ENERGY will review Enbridge Gas's consultation with Indigenous groups potentially affected by the Project and provide its decision as to whether Enbridge Gas' consultation has been sufficient. Upon receipt of ENERGY's decision regarding the sufficiency of Indigenous consultation on the Project, Enbridge Gas will file it with the OEB. The sufficiency letter provided by ENERGY will be included as Attachment 4 to this Exhibit.

#### Indigenous Engagement Program Objectives

6. The design of the Indigenous engagement program was based on adherence to the OEB's Guidelines and Enbridge Inc.'s company-wide Indigenous Peoples Policy (Policy) (set out at Attachment 5 to this Exhibit). The Policy lays out key principles for establishing relationships with Indigenous groups, which include:
  - Recognizing the importance of the United Nations Declaration on the Rights of Indigenous Peoples (UNDRIP) in the context of existing Canadian law.
  - Recognizing the legal and constitutional rights possessed by Indigenous Peoples in Canada and the importance of the relationship between Indigenous Peoples and their traditional lands and resources.
  - Engaging early to achieve meaningful relationships with Indigenous groups by providing timely exchanges of information, understanding and addressing Indigenous project-specific concerns, and ensuring ongoing dialogue regarding its projects, their potential impacts and benefits.

- Aligning Enbridge's interests with those of Indigenous communities through meaningful, direct Indigenous economic activity in projects corresponding to community capacity and project needs, where possible.
7. The Indigenous engagement program for the Project recognizes the rights of Indigenous groups and assists Enbridge Gas in engaging in meaningful dialogue with potentially affected Indigenous groups to address any Project-related concerns and interests. It also assists Enbridge Gas in meeting the procedural aspects of consultation that may be required by the Crown and the OEB's Guidelines.

#### Overview of Indigenous Engagement Program Activities

8. Enbridge Gas conducts its Indigenous engagement generally through phone calls, in-person meetings, Project mail-outs, open houses and email communications. During these engagement activities, Enbridge Gas representatives will provide an overview of the Project, respond to questions and concerns, and address any interests or concerns expressed by Indigenous communities to appropriately mitigate any Project-related impacts. In order to accurately document Indigenous engagement activities and ensure follow-up, applicable supporting documents are tracked using a database. In addition, capacity funding is offered to assist Indigenous communities to meaningfully participate in engagement activities.

#### Ongoing Indigenous Engagement Activities

9. Enbridge Gas will continue to actively engage all identified Indigenous groups in meaningful ongoing dialogue concerning the Project and endeavor to meet with each Indigenous group, provided they are willing, for the purpose of exchanging information regarding the Project and to respond to inquiries in a timely manner. Enbridge Gas will hear and address concerns as is feasible and seek information

Filed: 2025-05-09  
EB-2025-0073  
Exhibit H  
Tab 1  
Schedule 1  
Page 4 of 4  
Plus Attachments

on the exercise of, and potential impacts to, Aboriginal or treaty rights, traditional use in the Project area and how any potential Project-related impacts can be mitigated. Enbridge Gas also engages as appropriate with ENERGY to ensure they are kept apprised of rights assertions by communities.

10. Attachment 6 to this Exhibit contains a summary of Enbridge Gas's Indigenous engagement activities for the Project. Attachment 7 to this Exhibit contains the ICR and associated attachments for the Project.
11. The information presented in Attachments 6 and 7 reflects Enbridge Gas's Indigenous engagement activities for the Project up to and including May 1, 2025; however, Enbridge Gas will continue to engage throughout the life of the Project to ensure any impacts on Aboriginal or treaty rights are addressed, as appropriate.

Filed: 2025-05-09  
EB-2025-0073  
Exhibit I  
Tab 1  
Schedule 1  
Page 1 of 1

### CONDITIONS OF APPROVAL

1. The OEB has developed standard conditions that are typically imposed in leave to construct approvals.<sup>1</sup> Enbridge Gas has reviewed these standard conditions and has not identified any additional or revised conditions that the Company wishes to propose for this Project.

---

<sup>1</sup> Standard conditions of approval are included in Schedule 1 of the OEB's standard issues list for leave to construct applications: [https://www.oeb.ca/sites/default/files/issues-list-LTC-natural-gas\\_2024.pdf](https://www.oeb.ca/sites/default/files/issues-list-LTC-natural-gas_2024.pdf)



Directly Affected (D) Indirectly Affected (I)	PIN	Company Name	Address Line 1	Address Line 2	City	Province	Postal Code	Property Description	Mortgage, Lien/Lease/Encumbrances	Address Line 1	Address Line 2	City	Province	Postal Code
Directly Affected	247840004	THE PUBLIC AUTHORITY HAVING JURISDICTION	1151 BRONTE ROAD		OAKVILLE	ON	L6M 3L1	PT OF WINSTON CHURCHILL BLVD BEING THE W 1/2 LYING N OF LAKESHORE RD AND S OF ROYAL WINDSOR DR, BEING ; PT RDAL BTN WPS TRAFALGAR AND PEEL ; PT LT 1, CON 3 TRAFALGAR, SOUTH OF DUNDAS STREET , PART 2 , 20R4883 , PT LT 1, CON 3 TRAFALGAR, SOUTH OF DUNDAS STREET , PART 1 , 20R5301 , PT LT 1, CON 3 TRAFALGAR, SOUTH OF DUNDAS STREET , PART 2 AND 3 , 20R9647 ; PT LT 1, CON 3 TRAFALGAR, SOUTH OF DUNDAS STREET , AS IN 109261.	none					
Directly Affected	247840490	CANADIAN NATIONAL RAILWAY COMPANY	CN Headquarters, Montreal (Headquarters)	935 de La Gauchetière Street West	MONTREAL	QUEBEC	H3B 2M9	PT LTS 1, 2 & 3, CON 3 TRAF, SDS, AS IN 46603 AND AS IN 75043 LYING E OF THE NW LIMIT OF PT 14, 20R6772 EXCEPT PTS 2 & 3, 20R12276 ; OAKVILLE I	none					
Directly Affected	134930074	THE CORPORATION OF THE CITY OF MISSISSAUGA	300 CITY CENTRE DRIVE		MISSISSAUGA	ON	L5B 3C1	FIRSTLY: PT LT 31 CON 3 SDS TORONTO AS IN V5137823; PT LT 32 CON 3 SDS TORONTO & PT LT 31 CON 3 SDS TORONTO PTS 1-16, 43R7849, PTS 1-16, 43R19011; PT LT 33 CON 3 SDS TORONTO AS IN V5202431; PT LT 34 CON 3 SDS TORONTO PTS 5 & 6, 43R3588, PT 2	The Hydro-Electric Power Commission of Ontario Easement No. T777279	185 Clegg Road		Markham	ON	L6G 1B7



Tracking



Get Notified

# Tracking Results

Found below waybills:

- [LSHP41194937](#)
- [LSHP41195015](#)
- [LSHP41195070](#)
- [LSHP41195138](#)

SHIPMENT # : LSHP41194937  
PIECE # : LSHP41194937

POD

DELIVERED

DATE/TIME	STATUS	CITY
2025-06-06 12:25:39	Your Package was Delivered with no Signa Left at Reception Desk	ETOBICOKE
2025-06-05 23:07:46	Sorting It Out-Stay Tuned!	ETOBICOKE
2025-06-05 09:20:26	Moving, But Delayed a Bit	ETOBICOKE
2025-06-05 08:58:23	Out for Delivery-Almost There!	ETOBICOKE
2025-06-05 03:05:06	Package Has Arrived at Our Facility	VAUGHAN
2025-06-05 00:16:44	Package Has Arrived at Our Facility	ETOBICOKE
2025-06-04 22:34:38	Package Has Arrived at Our Facility	ETOBICOKE





2025-06-04 20:15:36  
Package Has Arrived at Our Facility  
ETOBICOKE

2025-06-04 18:20:37  
Package Has Arrived at Our Facility  
MARKHAM

2025-06-04 15:42:51  
Picked Up and On the Move!  
MARKHAM

2025-06-04 00:00:00  
Shipment Record Received  
NORTH YORK

[Top](#)

SHIPMENT # : LSHP41195015  
PIECE # : LSHP41195015

POD

DELIVERED

DATE/TIME  
STATUS  
CITY

2025-06-05 10:45:21  
Our Package was Delivered  
LACHINE

2025-06-05 07:41:49  
Out for Delivery-Almost There!  
LACHINE

2025-06-05 07:41:18  
Package Has Arrived at Our Facility  
LACHINE

2025-06-04 22:40:26  
Sorting It Out-Stay Tuned!  
ETOBICOKE

2025-06-04 22:40:24  
Package Has Arrived at Our Facility  
ETOBICOKE

2025-06-04 20:15:36  
Package Has Arrived at Our Facility  
ETOBICOKE

2025-06-04 18:20:37  
Package Has Arrived at Our Facility  
MARKHAM

2025-06-04 15:42:51  
Picked Up and On the Move!

MARKHAM



2025-06-04 00:00:00  
Shipment Record Received  
NORTH YORK

[Top](#)

SHIPMENT # : LSHP41195070  
PIECE # : LSHP41195070

POD

DELIVERED

DATE/TIME	STATUS	CITY
2025-06-25 13:11:19	Our Package was Delivered	VAUGHAN
2025-06-25 08:41:27	Out for Delivery-Almost There!	VAUGHAN
2025-06-13 13:24:28	Can't Find the Address-Checking Again!	VAUGHAN
2025-06-13 09:10:52	Out for Delivery-Almost There!	VAUGHAN
2025-06-12 15:58:25	Picked Up and On the Move!	VAUGHAN
2025-06-09 11:34:47	Returned to Sender	VAUGHAN
2025-06-09 08:26:52	Out for Delivery-Almost There!	VAUGHAN
2025-06-06 14:01:50	Can't Find the Address-Checking Again!	VAUGHAN
2025-06-06 08:43:22	Out for Delivery-Almost There!	VAUGHAN
2025-06-05 17:29:05	Business Closed Upon Arrival 1st Attempt	VAUGHAN

2025-06-05 08:45:02  
Out for Delivery-Almost There!  
VAUGHAN

2025-06-05 03:05:06  
Package Has Arrived at Our Facility  
VAUGHAN

2025-06-05 00:16:44  
Package Has Arrived at Our Facility  
ETOBICOKE

2025-06-04 22:34:58  
Package Has Arrived at Our Facility  
ETOBICOKE

2025-06-04 20:15:36  
Package Has Arrived at Our Facility  
ETOBICOKE

2025-06-04 18:20:37  
Package Has Arrived at Our Facility  
MARKHAM

2025-06-04 15:42:51  
Picked Up and On the Move!  
MARKHAM

2025-06-04 00:00:00  
Shipment Record Received  
NORTH YORK

[Top](#)

SHIPMENT # : LSHP41195138  
PIECE # : LSHP41195138

POD

DELIVERED

DATE/TIME  
STATUS  
CITY

2025-06-05 09:57:23  
Our Package was Delivered  
MARKHAM

2025-06-05 08:46:44  
Out for Delivery-Almost There!  
MARKHAM

2025-06-04 22:53:11  
Package Has Arrived at Our Facility  
ETOBICOKE

2025-06-04 22:34:46  
Package Has Arrived at Our Facility

ETOBICOKE

2025-06-04 20:15:36  
Package Has Arrived at Our Facility  
ETOBICOKE

2025-06-04 18:20:37  
Package Has Arrived at Our Facility  
MARKHAM

2025-06-04 15:42:51  
Picked Up and On the Move!  
MARKHAM

2025-06-04 00:00:00  
Shipment Record Received  
NORTH YORK

[Top](#)

[Shipping](#)

[Shipping Tools](#)

[Tracking](#)

Tracking Results



[Support](#)

[About Loomis Express](#)

[Holiday Schedule](#)

[Submit RFP](#)

[Contact](#)

[Careers](#)

[Service Alerts & Updates](#)

[APIAlerts](#)

TFI International consists of wholly-owned, independent subsidiaries, each of which is recognized for its unparalleled expertise. Our network of specialized companies offers highly efficient, global solutions to our clientele in four well-defined business segments: Package & Courier, LTL, Truckload and Logistics.



---

**EB-2025-0073 - Mississauga Reinforcement Project - OEB Notice of Application**

---

**From** Preet Gill <preet.gill@enbridge.com>

**Date** Wed 6/4/2025 2:47 PM

**To** city.clerk@mississauga.ca <city.clerk@mississauga.ca>; diana.rusnov@mississauga.ca <diana.rusnov@mississauga.ca>; Townclerk@oakville.ca <Townclerk@oakville.ca>; service@oakville.ca <service@oakville.ca>

 2 attachments (7 MB)

Notice\_EGI\_Mississauga Reinforcement Project\_20250602.pdf; EGI\_Application\_and\_Evidence\_MRP.pdf;

Good Afternoon,

On May 9, 2025, Enbridge Gas filed an application with the OEB for an order granting leave to construct for the following:

- Approximately 3.1 kilometres of NPS 6-inch steel natural gas main pipeline with a maximum operating pressure (MOP) of 1,900 kPa to reinforce the natural gas supply;
- Approximately 290 metres of NPS 6-inch steel natural gas service pipeline with a MOP of 1,900 kPa to the CRH Canada Inc. customer station;
- Rebuild of the CRH Canada Inc. and Petro-Canada Lubricants Inc. natural gas customer stations; and
- A new natural gas district regulating station and approximately 20 metres of NPS 4-inch steel natural gas pipeline.

On June 2, 2025, the OEB issued the Notice of Hearing (Notice) and the Letter of Direction for the proceeding. The OEB has directed Enbridge Gas to serve a copy of the Notice, Enbridge Gas's application and the evidence on all property owners and encumbrancers with lands or interest in lands directly affected by the proposed pipeline and related facilities.

Enclosed please find the OEB's Notice's (English and French versions) along with Enbridge Gas's application and select key exhibits (listed below) as filed with the OEB in the above noted proceeding:

- Exhibit A-2-1 – Application
- Exhibit A-2-1 – Attachment 1 - Project Map
- Exhibit B-1-1 – Project Need
- Exhibit C-1-1 – Project Alternatives
- Exhibit D-1-1 – Proposed Project
- Exhibit E-1-1 – Project Cost & Economics
- Exhibit F-1-1 – Environmental Matters
- Exhibit G-1-1 – Land Matters
- Exhibit H-1-1 – Indigenous Consultation
- Exhibit I-1-1 – Conditions of Approval

The full application and evidence are available on the Enbridge Gas website by accessing the link below and navigating to "Regulatory Information."

<https://www.enbridgegas.com/about-enbridge-gas/projects/mississauga-reinforcement-project>

A paper copy of the evidence filed in this proceeding (including all attachments and appendices) is available upon request.

Please contact me if you have any questions.

**Preet Gill**

Regulatory Coordinator

*Enbridge Gas Inc.*

500 Consumers Road | North York, Ontario | M2J 1P8

—

[enbridge.com](https://enbridge.com)

**Safety. Integrity. Respect. Inclusion. High Performance**





---

**Fw: EB-2025-0073 - Mississauga Reinforcement Project - OEB Notice of Application**

---

**From** Preet Gill <preet.gill@enbridge.com>

**Date** Wed 6/4/2025 2:54 PM

**To** minister.indigenousaffairs@ontario.ca <minister.indigenousaffairs@ontario.ca>

 2 attachments (7 MB)

Notice\_EGI\_Mississauga Reinforcement Project\_20250602.pdf; EGI\_Application\_and\_Evidence\_MRP.pdf;

Good Afternoon,

On May 9, 2025, Enbridge Gas filed an application with the OEB for an order granting leave to construct for the following:

- Approximately 3.1 kilometres of NPS 6-inch steel natural gas main pipeline with a maximum operating pressure (MOP) of 1,900 kPa to reinforce the natural gas supply;
- Approximately 290 metres of NPS 6-inch steel natural gas service pipeline with a MOP of 1,900 kPa to the CRH Canada Inc. customer station;
- Rebuild of the CRH Canada Inc. and Petro-Canada Lubricants Inc. natural gas customer stations; and
- A new natural gas district regulating station and approximately 20 metres of NPS 4-inch steel natural gas pipeline.

On June 2, 2025, the OEB issued the Notice of Hearing (Notice) and the Letter of Direction for the proceeding. The OEB has directed Enbridge Gas to serve a copy of the Notice, Enbridge Gas's application and the evidence on all property owners and encumbrancers with lands or interest in lands directly affected by the proposed pipeline and related facilities.

Enclosed please find the OEB's Notice's (English and French versions) along with Enbridge Gas's application and select key exhibits (listed below) as filed with the OEB in the above noted proceeding:

- Exhibit A-2-1 – Application
- Exhibit A-2-1 – Attachment 1 - Project Map
- Exhibit B-1-1 – Project Need
- Exhibit C-1-1 – Project Alternatives
- Exhibit D-1-1 – Proposed Project
- Exhibit E-1-1 – Project Cost & Economics
- Exhibit F-1-1 – Environmental Matters
- Exhibit G-1-1 – Land Matters
- Exhibit H-1-1 – Indigenous Consultation
- Exhibit I-1-1 – Conditions of Approval

The full application and evidence are available on the Enbridge Gas website by accessing the link below and navigating to "Regulatory Information."

<https://www.enbridgegas.com/about-enbridge-gas/projects/mississauga-reinforcement-project>

7/7/25, 10:40 AM

Fw: EB-2025-0073 - Mississauga Reinforcement Project - OEB Notice of Application - Preet Gill - Outlook

A paper copy of the evidence filed in this proceeding (including all attachments and appendices) is available upon request.

Please contact me if you have any questions.

**Preet Gill**

Regulatory Coordinator

*Enbridge Gas Inc.*

500 Consumers Road | North York, Ontario | M2J 1P8

—

[enbridge.com](https://enbridge.com)

**Safety. Integrity. Respect. Inclusion. High Performance**



Outlook

---

**EB-2025-0073 - Mississauga Reinforcement Project - OEB Notice of Application**

---

**From** Preet Gill <preet.gill@enbridge.com>

**Date** Wed 6/4/2025 2:49 PM

**To** consultations@metisnation.org <consultations@metisnation.org>

 2 attachments (7 MB)

Notice\_EGI\_Mississauga Reinforcement Project\_20250602.pdf; EGI\_Application\_and\_Evidence\_MRP.pdf;

Good Afternoon,

On May 9, 2025, Enbridge Gas filed an application with the OEB for an order granting leave to construct for the following:

- Approximately 3.1 kilometres of NPS 6-inch steel natural gas main pipeline with a maximum operating pressure (MOP) of 1,900 kPa to reinforce the natural gas supply;
- Approximately 290 metres of NPS 6-inch steel natural gas service pipeline with a MOP of 1,900 kPa to the CRH Canada Inc. customer station;
- Rebuild of the CRH Canada Inc. and Petro-Canada Lubricants Inc. natural gas customer stations; and
- A new natural gas district regulating station and approximately 20 metres of NPS 4-inch steel natural gas pipeline.

On June 2, 2025, the OEB issued the Notice of Hearing (Notice) and the Letter of Direction for the proceeding. The OEB has directed Enbridge Gas to serve a copy of the Notice, Enbridge Gas's application and the evidence on all property owners and encumbrancers with lands or interest in lands directly affected by the proposed pipeline and related facilities.

Enclosed please find the OEB's Notice's (English and French versions) along with Enbridge Gas's application and select key exhibits (listed below) as filed with the OEB in the above noted proceeding:

- Exhibit A-2-1 – Application
- Exhibit A-2-1 – Attachment 1 - Project Map
- Exhibit B-1-1 – Project Need
- Exhibit C-1-1 – Project Alternatives
- Exhibit D-1-1 – Proposed Project
- Exhibit E-1-1 – Project Cost & Economics
- Exhibit F-1-1 – Environmental Matters
- Exhibit G-1-1 – Land Matters
- Exhibit H-1-1 – Indigenous Consultation
- Exhibit I-1-1 – Conditions of Approval

The full application and evidence are available on the Enbridge Gas website by accessing the link below and navigating to "Regulatory Information."

<https://www.enbridgegas.com/about-enbridge-gas/projects/mississauga-reinforcement-project>

7/7/25, 10:44 AM

EB-2025-0073 - Mississauga Reinforcement Project - OEB Notice of Application - Preet Gill - Outlook

A paper copy of the evidence filed in this proceeding (including all attachments and appendices) is available upon request.

Please contact me if you have any questions.

## **Preet Gill**

Regulatory Coordinator

***Enbridge Gas Inc.***

500 Consumers Road | North York, Ontario | M2J 1P8

—

[enbridge.com](https://enbridge.com)

**Safety. Integrity. Respect. Inclusion. High Performance**



---

**EB-2025-0073 - Mississauga Reinforcement Project - OEB Notice of Application**

---

**From** Preet Gill <preet.gill@enbridge.com>

**Date** Wed 6/4/2025 2:50 PM

**To** Proximity@cn.ca <Proximity@cn.ca>; SecondaryLandUse@HydroOne.com <SecondaryLandUse@HydroOne.com>; dmotoc@oakvillehydro.com <dmotoc@oakvillehydro.com>; bell.moc@telecon.ca <bell.moc@telecon.ca>; utility.circulations@zayo.com <utility.circulations@zayo.com>

 2 attachments (7 MB)

Notice\_EGI\_Mississauga Reinforcement Project\_20250602.pdf; EGI\_Application\_and\_Evidence\_MRP.pdf;

Good Afternoon,

On May 9, 2025, Enbridge Gas filed an application with the OEB for an order granting leave to construct for the following:

- Approximately 3.1 kilometres of NPS 6-inch steel natural gas main pipeline with a maximum operating pressure (MOP) of 1,900 kPa to reinforce the natural gas supply;
- Approximately 290 metres of NPS 6-inch steel natural gas service pipeline with a MOP of 1,900 kPa to the CRH Canada Inc. customer station;
- Rebuild of the CRH Canada Inc. and Petro-Canada Lubricants Inc. natural gas customer stations; and
- A new natural gas district regulating station and approximately 20 metres of NPS 4-inch steel natural gas pipeline.

On June 2, 2025, the OEB issued the Notice of Hearing (Notice) and the Letter of Direction for the proceeding. The OEB has directed Enbridge Gas to serve a copy of the Notice, Enbridge Gas's application and the evidence on all property owners and encumbrancers with lands or interest in lands directly affected by the proposed pipeline and related facilities.

Enclosed please find the OEB's Notice's (English and French versions) along with Enbridge Gas's application and select key exhibits (listed below) as filed with the OEB in the above noted proceeding:

- Exhibit A-2-1 – Application
- Exhibit A-2-1 – Attachment 1 - Project Map
- Exhibit B-1-1 – Project Need
- Exhibit C-1-1 – Project Alternatives
- Exhibit D-1-1 – Proposed Project
- Exhibit E-1-1 – Project Cost & Economics
- Exhibit F-1-1 – Environmental Matters
- Exhibit G-1-1 – Land Matters
- Exhibit H-1-1 – Indigenous Consultation
- Exhibit I-1-1 – Conditions of Approval

The full application and evidence are available on the Enbridge Gas website by accessing the link below and navigating to "Regulatory Information."

<https://www.enbridgegas.com/about-enbridge-gas/projects/mississauga-reinforcement-project>

A paper copy of the evidence filed in this proceeding (including all attachments and appendices) is available upon request.

Please contact me if you have any questions.

**Preet Gill**

Regulatory Coordinator

*Enbridge Gas Inc.*

500 Consumers Road | North York, Ontario | M2J 1P8

—

[enbridge.com](https://enbridge.com)

**Safety. Integrity. Respect. Inclusion. High Performance**



## EB-2025-0073 - Mississauga Reinforcement Project - OEB Notice of Application

**From** Preet Gill <preet.gill@enbridge.com>

**Date** Wed 6/4/2025 2:51 PM

**To** OPCC.Chair@oeb.ca <OPCC.Chair@oeb.ca>; omafra.eanotices@ontario.ca <omafra.eanotices@ontario.ca>; karla.barboza@ontario.ca <karla.barboza@ontario.ca>; heritage@ontario.ca <heritage@ontario.ca>; james.hamilton@ontario.ca <james.hamilton@ontario.ca>; Emma.Sharkey@Ontario.ca <Emma.Sharkey@Ontario.ca>; shannon.mccabe@ontario.ca <shannon.mccabe@ontario.ca>; andrew.evers@ontario.ca <andrew.evers@ontario.ca>; sourceprotectionscreening@ontario.ca <sourceprotectionscreening@ontario.ca>; eanotification.cregion@ontario.ca <eanotification.cregion@ontario.ca>; eanotification.eregion@ontario.ca <eanotification.eregion@ontario.ca>; eanotification.nregion@ontario.ca <eanotification.nregion@ontario.ca>; eanotification.swregion@ontario.ca <eanotification.swregion@ontario.ca>; eanotification.wcregion@ontario.ca <eanotification.wcregion@ontario.ca>; nick.cole@infrastructureontario.ca <nick.cole@infrastructureontario.ca>; maya.harris@ontario.ca <maya.harris@ontario.ca>; heather.watt@ontario.ca <heather.watt@ontario.ca>; michael.elms@ontario.ca <michael.elms@ontario.ca>; erick.boyd@ontario.ca <erick.boyd@ontario.ca>; anna.little@ontario.ca <anna.little@ontario.ca>

2 attachments (7 MB)

Notice\_EGI\_Mississauga Reinforcement Project\_20250602.pdf; EGI\_Application\_and\_Evidence\_MRP.pdf;

Good Afternoon,

On May 9, 2025, Enbridge Gas filed an application with the OEB for an order granting leave to construct for the following:

- Approximately 3.1 kilometres of NPS 6-inch steel natural gas main pipeline with a maximum operating pressure (MOP) of 1,900 kPa to reinforce the natural gas supply;
- Approximately 290 metres of NPS 6-inch steel natural gas service pipeline with a MOP of 1,900 kPa to the CRH Canada Inc. customer station;
- Rebuild of the CRH Canada Inc. and Petro-Canada Lubricants Inc. natural gas customer stations; and
- A new natural gas district regulating station and approximately 20 metres of NPS 4-inch steel natural gas pipeline.

On June 2, 2025, the OEB issued the Notice of Hearing (Notice) and the Letter of Direction for the proceeding. The OEB has directed Enbridge Gas to serve a copy of the Notice, Enbridge Gas's application and the evidence on all property owners and encumbrancers with lands or interest in lands directly affected by the proposed pipeline and related facilities.

Enclosed please find the OEB's Notice's (English and French versions) along with Enbridge Gas's application and select key exhibits (listed below) as filed with the OEB in the above noted proceeding:

- Exhibit A-2-1 – Application
- Exhibit A-2-1 – Attachment 1 - Project Map
- Exhibit B-1-1 – Project Need
- Exhibit C-1-1 – Project Alternatives
- Exhibit D-1-1 – Proposed Project
- Exhibit E-1-1 – Project Cost & Economics

- Exhibit F-1-1 – Environmental Matters
- Exhibit G-1-1 – Land Matters
- Exhibit H-1-1 – Indigenous Consultation
- Exhibit I-1-1 – Conditions of Approval

The full application and evidence are available on the Enbridge Gas website by accessing the link below and navigating to “Regulatory Information.”

<https://www.enbridgegas.com/about-enbridge-gas/projects/mississauga-reinforcement-project>

A paper copy of the evidence filed in this proceeding (including all attachments and appendices) is available upon request.

Please contact me if you have any questions.

## **Preet Gill**

Regulatory Coordinator

*Enbridge Gas Inc.*

500 Consumers Road | North York, Ontario | M2J 1P8

—

[enbridge.com](https://www.enbridge.com)

**Safety. Integrity. Respect. Inclusion. High Performance**





---


**Fw: EB-2025-0073 - Mississauga Reinforcement Project - OEB Notice of Application**

---

**From** Preet Gill <preet.gill@enbridge.com>

**Date** Wed 6/4/2025 2:53 PM

**To** eric.james@cvc.ca <eric.james@cvc.ca>; sstewart@hrca.on.ca <sstewart@hrca.on.ca>

 2 attachments (7 MB)

Notice\_EGI\_Mississauga Reinforcement Project\_20250602.pdf; EGI\_Application\_and\_Evidence\_MRP.pdf;

Good Afternoon,

On May 9, 2025, Enbridge Gas filed an application with the OEB for an order granting leave to construct for the following:

- Approximately 3.1 kilometres of NPS 6-inch steel natural gas main pipeline with a maximum operating pressure (MOP) of 1,900 kPa to reinforce the natural gas supply;
- Approximately 290 metres of NPS 6-inch steel natural gas service pipeline with a MOP of 1,900 kPa to the CRH Canada Inc. customer station;
- Rebuild of the CRH Canada Inc. and Petro-Canada Lubricants Inc. natural gas customer stations; and
- A new natural gas district regulating station and approximately 20 metres of NPS 4-inch steel natural gas pipeline.

On June 2, 2025, the OEB issued the Notice of Hearing (Notice) and the Letter of Direction for the proceeding. The OEB has directed Enbridge Gas to serve a copy of the Notice, Enbridge Gas's application and the evidence on all property owners and encumbrancers with lands or interest in lands directly affected by the proposed pipeline and related facilities.

Enclosed please find the OEB's Notice's (English and French versions) along with Enbridge Gas's application and select key exhibits (listed below) as filed with the OEB in the above noted proceeding:

- Exhibit A-2-1 – Application
- Exhibit A-2-1 – Attachment 1 - Project Map
- Exhibit B-1-1 – Project Need
- Exhibit C-1-1 – Project Alternatives
- Exhibit D-1-1 – Proposed Project
- Exhibit E-1-1 – Project Cost & Economics
- Exhibit F-1-1 – Environmental Matters
- Exhibit G-1-1 – Land Matters
- Exhibit H-1-1 – Indigenous Consultation
- Exhibit I-1-1 – Conditions of Approval

The full application and evidence are available on the Enbridge Gas website by accessing the link below and navigating to "Regulatory Information."

<https://www.enbridgegas.com/about-enbridge-gas/projects/mississauga-reinforcement-project>

7/7/25, 10:41 AM

Fw: EB-2025-0073 - Mississauga Reinforcement Project - OEB Notice of Application - Preet Gill - Outlook

A paper copy of the evidence filed in this proceeding (including all attachments and appendices) is available upon request.

Please contact me if you have any questions.

## **Preet Gill**

Regulatory Coordinator

***Enbridge Gas Inc.***

500 Consumers Road | North York, Ontario | M2J 1P8

—

[enbridge.com](https://enbridge.com)

**Safety. Integrity. Respect. Inclusion. High Performance**



Outlook

---

**EB-2025-0073 - Mississauga Reinforcement Project - OEB Notice of Application**

---

**From** Preet Gill <preet.gill@enbridge.com>

**Date** Wed 6/4/2025 2:48 PM

**To** consultations@wendake.ca <consultations@wendake.ca>; communications@mncfn.ca <communications@mncfn.ca>; LRCS@sixnations.ca <LRCS@sixnations.ca>; info@hdi.land <info@hdi.land>

 2 attachments (7 MB)

Notice\_EGI\_Mississauga Reinforcement Project\_20250602.pdf; EGI\_Application\_and\_Evidence\_MRP.pdf;

Good Afternoon,

On May 9, 2025, Enbridge Gas filed an application with the OEB for an order granting leave to construct for the following:

- Approximately 3.1 kilometres of NPS 6-inch steel natural gas main pipeline with a maximum operating pressure (MOP) of 1,900 kPa to reinforce the natural gas supply;
- Approximately 290 metres of NPS 6-inch steel natural gas service pipeline with a MOP of 1,900 kPa to the CRH Canada Inc. customer station;
- Rebuild of the CRH Canada Inc. and Petro-Canada Lubricants Inc. natural gas customer stations; and
- A new natural gas district regulating station and approximately 20 metres of NPS 4-inch steel natural gas pipeline.

On June 2, 2025, the OEB issued the Notice of Hearing (Notice) and the Letter of Direction for the proceeding. The OEB has directed Enbridge Gas to serve a copy of the Notice, Enbridge Gas's application and the evidence on all property owners and encumbrancers with lands or interest in lands directly affected by the proposed pipeline and related facilities.

Enclosed please find the OEB's Notice's (English and French versions) along with Enbridge Gas's application and select key exhibits (listed below) as filed with the OEB in the above noted proceeding:

- Exhibit A-2-1 – Application
- Exhibit A-2-1 – Attachment 1 - Project Map
- Exhibit B-1-1 – Project Need
- Exhibit C-1-1 – Project Alternatives
- Exhibit D-1-1 – Proposed Project
- Exhibit E-1-1 – Project Cost & Economics
- Exhibit F-1-1 – Environmental Matters
- Exhibit G-1-1 – Land Matters
- Exhibit H-1-1 – Indigenous Consultation
- Exhibit I-1-1 – Conditions of Approval

The full application and evidence are available on the Enbridge Gas website by accessing the link below and navigating to "Regulatory Information."

<https://www.enbridgegas.com/about-enbridge-gas/projects/mississauga-reinforcement-project>

7/7/25, 10:45 AM

EB-2025-0073 - Mississauga Reinforcement Project - OEB Notice of Application - Preet Gill - Outlook

A paper copy of the evidence filed in this proceeding (including all attachments and appendices) is available upon request.

Please contact me if you have any questions.

## **Preet Gill**

Regulatory Coordinator

***Enbridge Gas Inc.***

500 Consumers Road | North York, Ontario | M2J 1P8

—

[enbridge.com](https://enbridge.com)

**Safety. Integrity. Respect. Inclusion. High Performance**



[Home](#) / [About Us](#) / [Projects](#)

## Mississauga Reinforcement Project

Enbridge Gas is proposing to construct new natural gas pipelines and related infrastructure in the City of Mississauga and Town of Oakville to meet the requirements of three industrial customers.

The proposed Mississauga Reinforcement Project will also include the rebuilding of existing natural gas customer stations located on the customers' properties. The project is anticipated to be located in the existing municipal road right-of-way and on clients' properties, and may also require permanent easements, temporary working space and lay-down areas during construction.

Three routes were considered for the project and the preferred route has been identified as follows:

- Consists of approximately 3.1 km of 6-inch diameter natural gas pipeline.
- Starts at Winston Churchill Boulevard and Royal Windsor Drive, will travel along Winston Churchill Boulevard to Lakeshore Road for about 2.2 km.
- Ends south of one existing Enbridge Gas customer property.

It would also require the following:

- Rebuilding two existing Enbridge Gas customer stations, located entirely on existing customer properties.
- A new natural gas service pipeline may need to be constructed on the customer's property to connect to the future new customer station (to be determined).
- A feeder station to be built near Lakeshore Road West to the east of Winston Churchill Boulevard.



[View larger map](#)

### Project status/timeline



### Project information

Project information
Project calendar
Project consultation
<b>Regulatory information</b>
Contact information

#### Regulatory information

The Mississauga Reinforcement Project is regulated by the Ontario Energy Board (OEB), an independent government agency that regulates the electricity and natural gas sectors. After a public review and hearing, the OEB will decide whether to approve the project's application. In this section, you can review all regulatory files about the project once they are available.

#### Environmental report

In accordance with the OEB's "Environmental Guidelines for the Location, Construction, and Operation of Hydrocarbon Projects and Facilities in Ontario, 8th Edition (2023)", Enbridge Gas has retained the services of Stantec Consulting Ltd., an independent environmental consultant, to complete an environmental assessment for the proposed project.

The purpose of the environmental assessment is to:

- Identify any potential impacts of the proposed project on the social, economic and natural environments.
- Identify local or provincial concerns regarding the proposed project.
- Determine preferred routing of the pipeline segments.
- Gather input from agencies, stakeholders, First Nations and Métis, affected landowners, and the public.

In addition, it recommends mitigation measures to limit impacts on the social, economic and natural environments. It is important to minimize potential negative impacts of the proposed natural gas distribution pipelines and associated facilities on the environment. The data, analysis and results of the environmental assessment is detailed in an environmental report.

#### Leave to construct application

Enbridge Gas filed a Leave to Construct application with the Ontario Energy Board on May 9, 2025.

[Read the Leave to Construct Application](#)

[Read the Notice of Application](#)