

Appendix G4

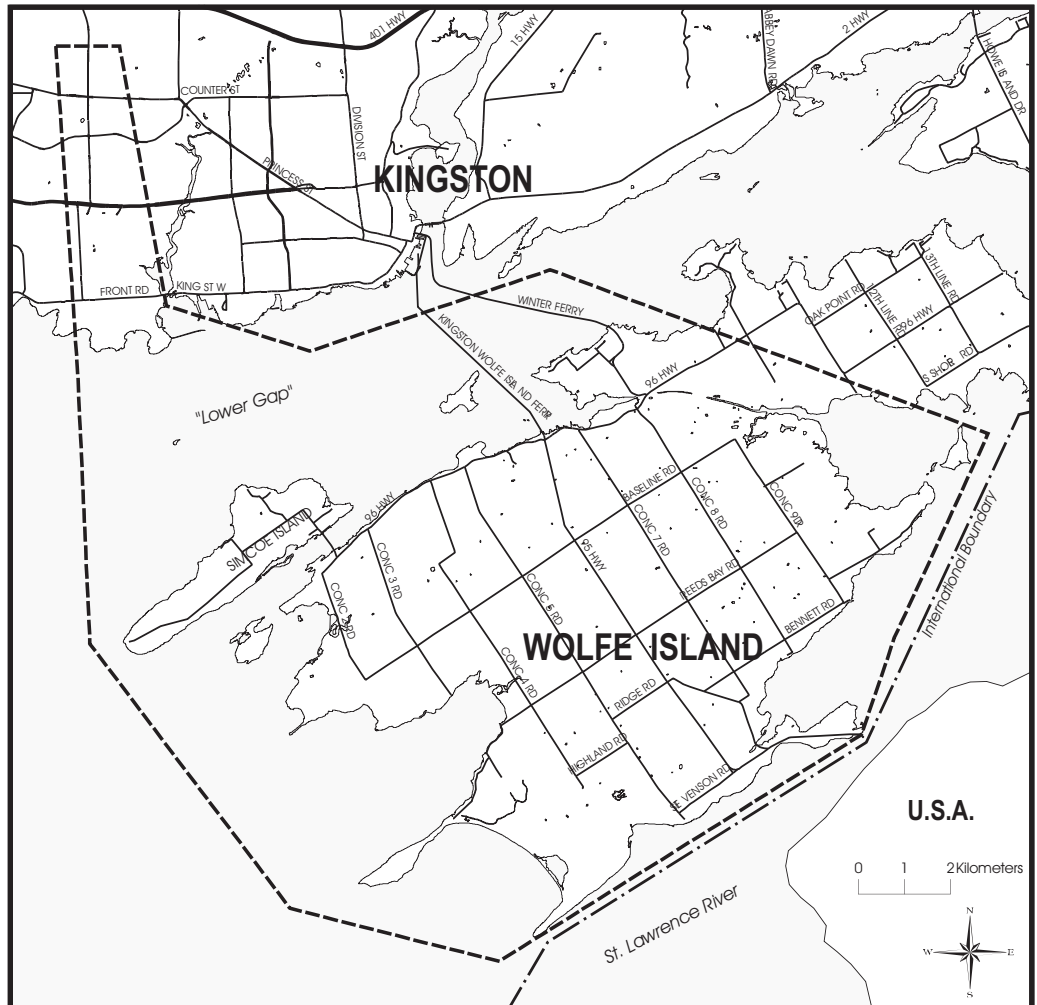
Public Open Houses – March 2006

NOTICE OF PUBLIC OPEN HOUSE

Wolfe Island Wind Project

Canadian Hydro Developers, Inc. ("Canadian Hydro"), through its wholly owned subsidiary Canadian Renewable Energy Corporation ("CREC"), is proposing to develop a wind plant on Wolfe Island, in the Township of Frontenac Islands, near Kingston, Ontario. Canadian Hydro, with eighteen plants in operation throughout Canada, is recognized as one of Canada's premier independent developers of EcoLogo™ certified low-impact renewable energy (www.canhydro.com). The Wolfe Island Wind Project will consist of 86 turbines, strategically placed throughout the study area (see map), and will generate approximately 198 megawatts of renewable energy. Ancillary features include access roads, a transformer station, land-based transmission lines and an underwater electrical cable across the "Lower Gap" between Wolfe Island and Kingston.

To assist with environmental and planning aspects of the Wolfe Island Wind Project, CREC has retained Stantec Consulting Ltd. ("Stantec") to prepare an Environmental Screening Report ("ESR"), as required under Ontario Regulation 116/01 of the *Environmental Assessment Act*. The ESR is being completed as required for a Category B project under the Ministry of the Environment's Environmental Screening Process for electricity projects as outlined in their "Guide to Environmental Assessment Requirements for Electricity Projects (March 2001)". CREC and Stantec are also in the process of working with federal authorities to ensure the project fulfills applicable federal permits and approvals as well as the *Canadian Environmental Assessment Act*. This Public Open House is being held, and stakeholder input collected, as part of the above-noted regulatory processes.



At this time, CREC invites you to attend two Public Open Houses regarding the Wolfe Island Wind Project. The Public Open Houses will be identical to each other and will provide the opportunity for stakeholders to review the project concept, environmental screening process, and general planning constraints, as well as to provide comments to the project team. The Public Open Houses are scheduled for:

When: March 22, 2006
Time: 6:00 to 9:00 p.m.
Where: Sacred Heart Catholic School
57 Highway 95, Wolfe Island

When: March 23, 2006
Time: 6:00 to 9:00 p.m.
Where: Ambassador Conference Resort
1550 Princess Street, Kingston

Stakeholder participation is an important component of the environmental screening process. In order to ensure that the appropriate environmental protection measures are incorporated into the project design, your input and questions are encouraged. To provide the study team with your comments, or for further information, please visit us at www.wolfeislandwind.com or call Stantec collect at (519) 836-6050. Written comments can also be sent to:

Rob Nadolny
Senior Project Manager
Stantec Consulting Ltd.
361 Southgate Drive
Guelph, Ontario
N1G 3M5

Geoff Carnegie
Manager, Ontario Projects
Canadian Renewable Energy Corporation
c/o 52 Hilldale Crescent
Guelph, Ontario
N1G 4B8

Fax: 519.836.2493
E-mail: comments@wolfeislandwind.com

Information will be collected and used in accordance with the Freedom of Information and Protection of Privacy Act, and solely for the purpose of assisting CREC in meeting environmental assessment and local planning requirements. This material will be maintained on file for use during the study and may be included in project documentation. With the exception of personal information, all comments will become part of the public record.

March 2, 2006

ADDRESS

LINE 2

LINE 3

RE: Notice of Public Open Houses

Wolfe Island Wind Project

Dear NAME:

Further to our earlier correspondence on the above-captioned project, Canadian Renewable Energy Corporation ("CREC") and Stantec Consulting Ltd. ("Stantec") will be conducting two Public Open Houses regarding the Wolfe Island Wind Project (see attachment). The Public Open Houses will introduce the project concept, environmental screening process, general planning constraints, and the anticipated project timeline.

As a representative of an agency with an interest in the proposed wind project you are invited to attend the Public Open Houses to provide comments or ask questions regarding this project. Representatives from both CREC and Stantec will be available to answer questions and receive comments. Although the two Public Open Houses will provide identical information, we have scheduled them to give you more flexibility to choose a date and location that is most convenient for you. The Public Open Houses will be held at:

When: Wednesday, 22 March, 2006
Time: 6:00 to 9:00 p.m.
Where: Sacred Heart Catholic School
57 Highway 95, Wolfe Island

When: Thursday, 23 March, 2006
Time: 6:00 to 9:00 p.m.
Where: Ambassador Conference Resort
1550 Princess St., Kingston

We hope that you will attend the Open House(s), however, if you are unable to join us we welcome your input. To provide the study team with your comments, or for further information, please contact Stantec at **(519) 836-6050**, via email at **comments@wolfeislandwind.com**, or visit the project website at **www.wolfeislandwind.com**.

CREC and Stantec would like to take this opportunity to extend our thanks for your participation in this renewable energy initiative.

Sincerely,

STANTEC CONSULTING LTD.

Rob Nadolny
Senior Project Manager
Stantec Consulting Ltd.

**NOTICE OF PUBLIC OPEN HOUSES
WOLFE ISLAND WIND PROJECT
MARCH 22 & 23, 2006**



AGENCY CONTACT LIST



Darla Cameron
Canadian Environmental Assessment
Agency
55 St. Clair Avenue, Room 907
Toronto, ON M4T 1M2

Barry Birrell
Correctional Service of Canada
440 King St. W
PO Box 1174
Kingston, ON K7L 4Y8

Bill Warwick
Catawaqui Region Conservation
Authority
1641 Perth Rd.
Glenburnie, ON K0H 1S0

Karen Fischer
County of Frontenac
2069 Battersea Road
Glenburnie, ON K0H 1S0

Stephen Knechtel
Catawaqui Region Conservation
Authority
1641 Perth Rd.
Glenburnie, ON K0H 1S0

Phil Leonard
County of Frontenac
2069 Battersea Rd.
Glenburnie, ON K0H 1S0

Bianca Bielski
City of Kingston
City Hall, 216 Ontario Street
Kingston, ON K7L 2Z3

Sheila Allan
Environment Canada
P.O. Box 5050, 867 Lakeshore Road
Burlington, ON L7R 4A6

Bob Clark
Clark Consulting Services
52 John St
Port Hope, ON L1A 2Z2

Richard Van Ingen
Fisheries and Oceans Canada
401 King St. West
Prescott, ON K0G 1T0

Terry O'Shea
Corporation of the Township of
Frontenac Islands
PO Box 130
Wolfe Island, ON K0H 2Y0

Lou Battiston
Government Mobile Communications
Office
155 University Avenue, 14th Floor
Toronto, ON M5H 3B7

Akrum Matuk
Correctional Service of Canada
440 King St. West
Kingston, ON K7L 4Y8

Anjala Puvananathan
Health Canada
25 St. Clair Avenue East
Toronto, ON M4T 1M2

**NOTICE OF PUBLIC OPEN HOUSES
WOLFE ISLAND WIND PROJECT
MARCH 22 & 23, 2006**



AGENCY CONTACT LIST



Carolyn Dunn
Health Canada
269 Laurier Avenue W
Ottawa, ON K1A 0K9

Diane McClymont-Peace
Health Canada
Tupper Building, P.L. 6604M
4th Floor, Room C490, 2720 Riverside
Drive
Ottawa, ON K1A 0K9

Elizabeth Crawford
Health Canada
2301 Midland Avenue
Toronto, ON M1P 4R7

Cheyenne Loon
Indian and Northern Affairs Canada
25 St. Clair Ave. East, 8th Floor
Toronto, ON M4T 1M2

Curtis Lockett
Natural Resources Canada
580 Booth Street, 11th Floor, Room C9
Ottawa, ON K1A 0E4

Kathleen Cavallaro
Natural Resources Canada
580 Booth Street, 3rd Floor, Room A8-
2
Ottawa, ON K1A 0E4

Micheline Turpin
Natural Resources Canada
3rd Floor, Section C2, 580 Booth
Street
Ottawa, ON K1A 0E4

David Smyth
NAV Canada
1601 Tom Roberts Ave.
P.O. Box 9824, Stn T
Ottawa, ON K1G 6R2

Neil McKay
Ontario Energy Board
P.O. Box 2319, 230 Yonge St., 26th
Floor
Toronto, ON M4P 1E4

Zora Crnojacki
Ontario Energy Board
P.O. Box 2319, 230 Yonge St., 26th
Floor
Toronto, ON M4P 1E4

Ray Valaitis
Ontario Ministry of Agriculture, Food
and Rural Affairs
95 Dundas Street East
Brighton, ON K0K 1H0

Chris Andersen
Ontario Ministry of Culture
400 University Ave., 4th Floor
Toronto, ON M7A 2R9

Neil Hutchings
Ontario Ministry of Energy
880 Bay St., 3rd Floor
Toronto, ON M7A 2C1

**NOTICE OF PUBLIC OPEN HOUSES
WOLFE ISLAND WIND PROJECT
MARCH 22 & 23, 2006**



AGENCY CONTACT LIST



James O'Mara
Ontario Ministry of Environment
2 St. Clair Avenue West, Floor 12 A
Toronto, ON M4V 1L5

Vicki Mitchell
Ontario Ministry of Environment
133 Dalton Ave.
PO Box 820
Kingston, ON K7L 4X6

Brian Ritchie
Ontario Ministry of Municipal Affairs
and Housing
91 Cornelia St. W
Smiths Falls, ON K7A 5L3

Joe Gallivan
Ontario Ministry of Municipal Affairs
and Housing
8 Estate Lane
Kingston, ON K7M 9A8

Dan Radoja
Ontario Ministry of Natural Resources
South Tower, 1st Floor
300 Water St., PO Box 7000
Peterborough, ON K9J 8M5

Gerry Mulder
Ontario Ministry of Natural Resources
51 Heakes Lane
Kingston, ON K7M 9B1

Sally Colman
Ontario Ministry of Natural Resources
51 Heakes Lane
Kingston, ON K7M 9B1

Ken Williams
Ontario Ministry of Transportation
355 John Counter Boulevard, P.O. Bag
4000
Kingston, ON K7L 5A3

Mark Yeates
Parks Canada
111 Water Street East
Cornwall, ON K6H 6S3

Barry Birrell
Public Works and Government
Services Canada
Building A-2, 1455 Bath Road
Kingston, ON K7L 4V9

M.S. Paradis
St. Lawrence Parks Commission
13740 County Rd. 2
Morrisburg, ON K0C 1X0

Glen Palmer
Technical Standards and Safety
Authority
3300 Bloor St. W
4th Floor West Tower
Toronto, ON M8X 2X4

Cyril Dicks
Transport Canada
100 S. Front Street
Sarnia, ON N7T 2M4

**NOTICE OF PUBLIC OPEN HOUSES
WOLFE ISLAND WIND PROJECT
MARCH 22 & 23, 2006**



AGENCY CONTACT LIST



David Zeit
Transport Canada
Ontario Regional Office, Joseph
Shepard Building 4900 Yonge St. Suite
300
North York, ON M2N 6A5

Susanne Turcotte-Homer
Transport Canada
Ontario Regional Office, Joseph
Shepard Building, 4900 Yonge St.
Suite 300
North York, ON M2N 6A5

Brad Finch
Kingston Norman Rogers Airport
1114 Len Birchall Way
Kingston, ON K7M 4M1

Jim Miller
Utilities Kingston
211 Counter St.
Kingston, ON K7L 4X7

Shirley de Silva
Kingston Norman Rogers Airport
1114 Len Birchall Way
Kingston, ON K7M 4M1

Bruce Armstrong
Jefferson County, Department of
Planning
175 Arsenal Street
Watertown NY 13601

March 1, 2006

[Click here and type recipients address. Use Shift+Enter to break between lines.]

Dear Landowner/Tenant::

RE: Notice of Public Open Houses: Wolfe Island Wind Project

Canadian Renewable Energy Corporation ("CREC") and Stantec Consulting Ltd. ("Stantec") will be conducting two Public Open Houses regarding the Wolfe Island Wind Project (see attachment). The Public Open Houses will introduce the project concept, environmental screening process, general planning constraints, and the anticipated project timeline.

The purpose of this letter is to invite you to attend the Public Open Houses to provide comments and/or ask questions regarding this wind project. Representatives from both CREC and Stantec will be available to answer questions and receive comments. Although the two Public Open Houses will provide identical information, we have scheduled them to give you more flexibility to choose a date and location that is most convenient for you. The Public Open Houses will be held at:

When: Wednesday, 22 March, 2006
Time: 6:00 to 9:00 p.m.
Where: Sacred Heart Catholic School
57 Highway 95, Wolfe Island

When: Thursday, 23 March, 2006
Time: 6:00 to 9:00 p.m.
Where: Ambassador Conference Resort
1550 Princess St., Kingston

We hope that you will attend the Open House(s), however, if you are unable to join us we welcome your input. To provide the study team with your comments, or for further information, please contact Stantec at **(519) 836-6050** (call collect), via email at **comments@wolfeislandwind.com**, or visit the project website at **www.wolfeislandwind.com**.

CREC and Stantec would like to take this opportunity to extend our thanks for your participation in this renewable energy initiative.

Sincerely,

STANTEC CONSULTING LTD.

Rob Nadolny
Senior Project Manager
Stantec Consulting Ltd.
Tel: (519)836-6050 EX. 231
Fax: (519)836-2493

**NOTICE OF PUBLIC OPEN HOUSES
WOLFE ISLAND WIND PROJECT
MARCH 22 & 23, 2006**



INTEREST GROUP CONTACT LIST



Brian Hart
Hearthmakers Energy Cooperative
99 York St.
Kingston, ON K7K 1P9

455 Front Rd.
PO Box 2100
Kingston, ON K7L 4Z6

Bryan Funk
Union Gas Ltd.
520 Gardiners Rd.
Kingston, ON K7L 4Y6

Peter Tobias
Kingston Economic Development
Corporation
67 Brock St.
Kingston, ON K7L 1R8

Dean Thomas Harris
Queens University
Ellis Hall, Room 101
Kingston, ON K7L 3N6

Ron Maher
Ducks Unlimited
614 Norris Ct.
Kingston, ON K7P 2R9

Erwin Batalla
Kingston Field Naturalists
PO Box 831
Kingston, ON K7L 4X6

Ron Sharp
Limestone District School Board
220 Portsmouth Avenue
Postal Bag 610
Kingston, Ontario K7L 4X4

Globe Realty Holdings
c/o Brookfield Lepage - Johnson Controls
7400 Birchmount Rd.
Box 4800
Markham, ON L3R 5V4

Scott Muir
Ducks Unlimited
614 Norris Ct.
Kingston, ON K7P 2R9

John Inglis
McCarthy Tetrault LLP
Box 48, Suite 4700 Toronto Dominion Bank
Tower
Toronto, ON M5K 1E6

Volker Thomsen
St. Lawrence College
100 Portsmouth Ave
Kingston, ON K7L 5A6

Michael Schmitt
Algonquin and Lakeshore Catholic District
School Board
151 Dairy Avenue
Napanee, Ontario K7R 4B2

Owen Steele
Ducks Unlimited Canada ☐566
Welham Road
Barrie, ON L4N 8Z7

Peter Chantraine
INVISTA

Bonnie Porteous
Girl Guides of Canada, Kingston
Division, 695 Braeside Cr.
Kingston, Ontario K7P 1G6

**NOTICE OF PUBLIC OPEN HOUSES
WOLFE ISLAND WIND PROJECT
MARCH 22 & 23, 2006**

INTEREST GROUP CONTACT LIST



Ralph Shaw
Kingston Yacht Club 1 Maitland Street
Kingston, ON K7L 2V3

Don Ross
Prince Edward County Wind Co-op
RR#2, 18 Chapman's Crescent
Milford, ON K0K 2P0

Roger Cole
Corus Entertainment Inc.
170 Queen Street
Kingston, ON K7K 1B2

Steven Sottile
SWITCH Kingston Alternative
Energy Cluster 94 College St, # 3
Kingston, ON K7L 4L6



Stantec

March 2, 2006

Chief and Council
Mohawks of the Bay of Quinte
RR1 Tyendinaga Mohawk Territory
ON K0K 1X0
Canada

Dear Chief and Council

RE: Notice of Public Open Houses: Wolfe Island Wind Project

Canadian Renewable Energy Corporation ("CREC") and Stantec Consulting Ltd. ("Stantec") will be conducting two Public Open Houses regarding the Wolfe Island Wind Project (see attachment). The Public Open Houses will introduce the project concept, environmental screening process, general planning constraints, and the anticipated project timeline.

The purpose of this letter is to invite you to attend the Public Open Houses to provide comments and/or ask questions regarding this wind project. Representatives from both CREC and Stantec will be available to answer questions and receive comments. Although the two Public Open Houses will provide identical information, we have scheduled them to give you more flexibility to choose a date and location that is most convenient for you. The Public Open Houses will be held at:

When: Wednesday, 22 March, 2006
Time: 6:00 to 9:00 p.m.
Where: Sacred Heart Catholic School
57 Highway 95, Wolfe Island

When: Thursday, 23 March, 2006
Time: 6:00 to 9:00 p.m.
Where: Ambassador Conference Resort
1550 Princess St., Kingston

We hope that you will attend the Open House(s), however, if you are unable to join us we welcome your input. To provide the study team with your comments, or for further information, please contact Stantec at **(519) 836-6050** (call collect), via email at **comments@wolfeislandwind.com**, or visit the project website at **www.wolfeislandwind.com**.

CREC and Stantec would like to take this opportunity to extend our thanks for your participation in this renewable energy initiative.

Sincerely,

STANTEC CONSULTING LTD.



Rob Nadolny
Senior Project Manager
Stantec Consulting Ltd.
Tel: (519)836-6050 EX. 231
Fax: (519)836-2493

**NOTICE OF PUBLIC OPEN HOUSES
WOLFE ISLAND WIND PROJECT
MARCH 22 & 23, 2006**

FIRST NATIONS CONTACT LIST



Chief and Council
Mohawks of the Bay of Quinte
RR1 Tyendinaga Mohawk Territory
ON K0K 1X0





Wolfe Island Wind Project

Contact Us - Get Involved!

Stakeholder involvement is a vital part of the Environmental Screening Process. You can participate by:

- Submitting your comments using this form
- Sending an email with your comments to: comments@wolfeislandwind.com
- Sending written comments by mail or fax to:

Rob Nadolny
Senior Project Manager
Wolfe Island Wind Project
Stantec Consulting Ltd.
361 Southgate Drive
Guelph, Ontario N1G 3M5
Telephone: 519-836-6050 (call collect)
Fax: 519-836-2493

You can also sign up to receive future project information

Please sign me up to be on the Wolfe Island Wind Project distribution list

Name: _____

Affiliation: _____

Address: _____

Lot/Concession/Township: _____

Postal Code: _____

Telephone: _____

Fax: _____

Email: _____

Website: www.wolfeislandwind.com

Information will be collected and used in accordance with the *Freedom of Information and Protection of Privacy Act*, and solely for the purpose of assisting CREC in meeting environmental assessment and local planning requirements. This material will be maintained on file for use during the study and may be included in project documentation. With the exception of personal information, all comments will become part of the public record

Welcome

to this Public Open House
for the

Wolfe Island Wind Project

Wednesday, March 22, 2006
6:00 to 9:00pm

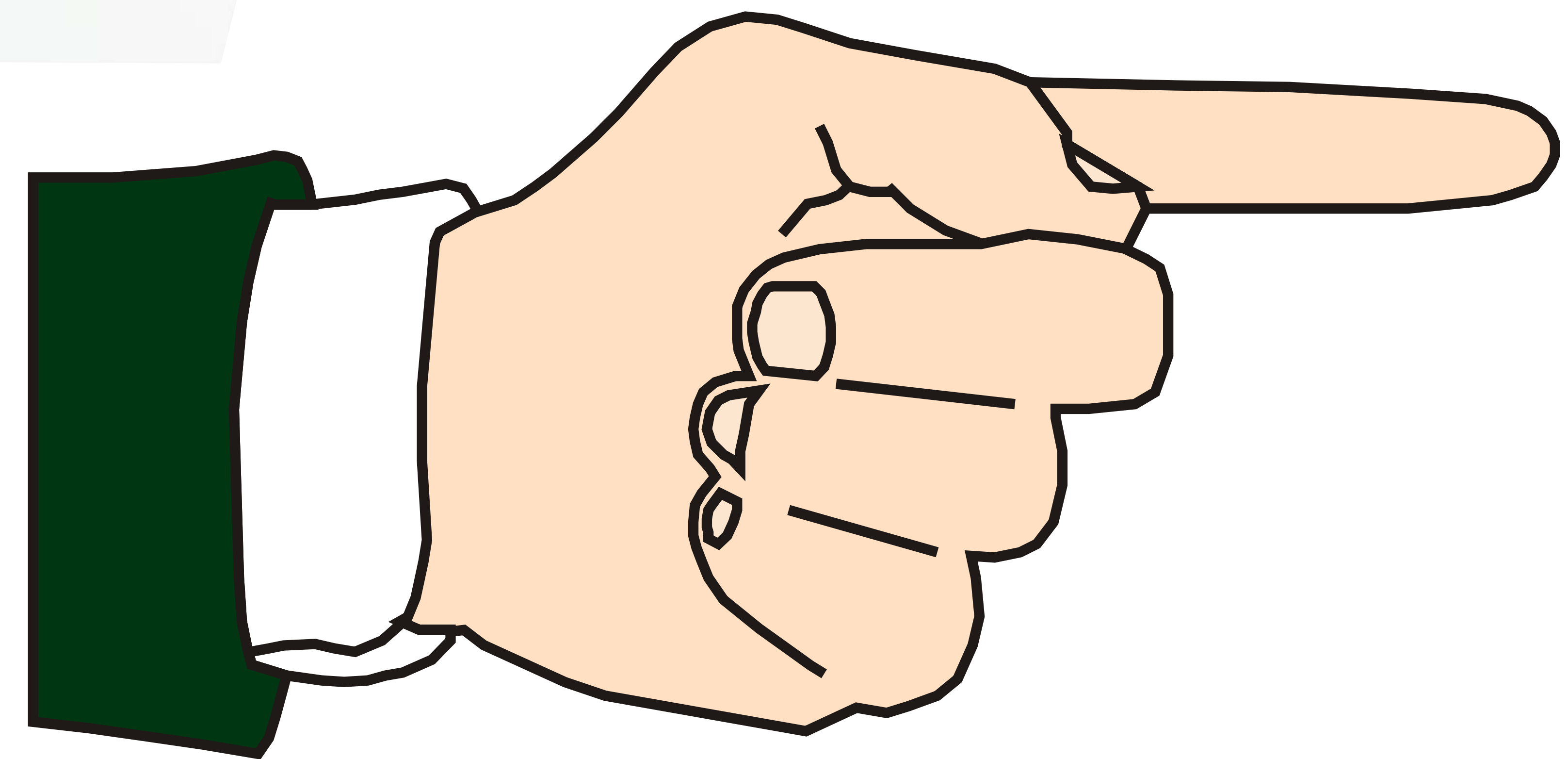
Welcome

to this Public Open House
for the

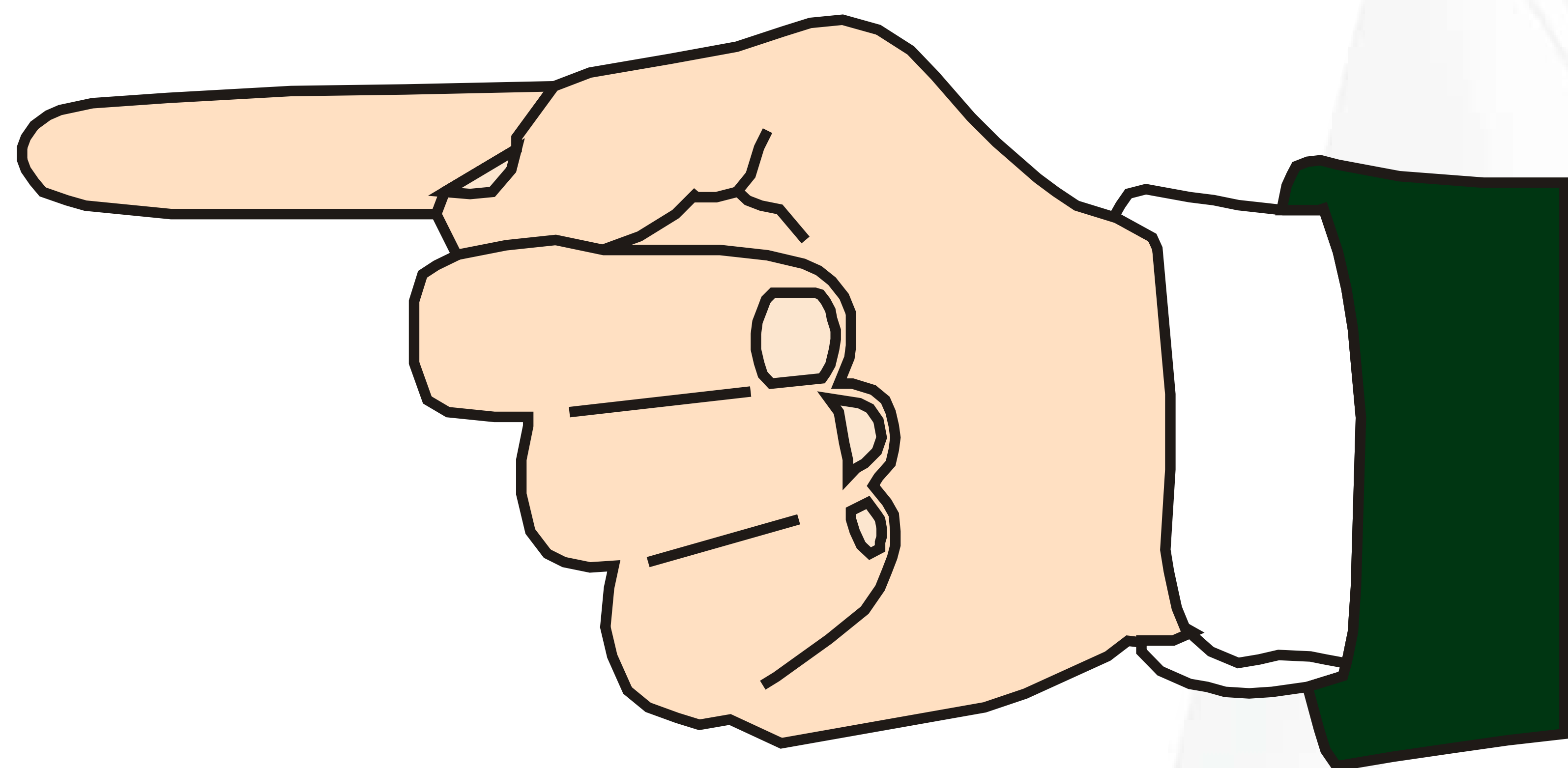
Wolfe Island Wind Project

Thursday, March 23, 2006
6:00 to 9:00pm

Public Open House



Public Open House



Please Sign In Here



CREC

CANADIAN RENEWABLE
ENERGY CORPORATION

What is the purpose of this Open House?



- To update you on the status of the Wolfe Island Wind Project and the Environmental Screening Process
- To receive stakeholder input on the project and identify stakeholder issues to be considered during the Environmental Screening Process
- Stakeholder input is a key component of project planning and the Environmental Screening Process, so please assist us by providing your comments using the comment cards

Who is Canadian Renewable Energy Corporation (CREC)?



- A wholly-owned subsidiary of Canadian Hydro Developers, Inc., one of Canada's premier independent developers of **EcoLogo®** certified low-impact renewable energy

Canadian Hydro:

- has eighteen renewable electricity generation plants located across Canada
- has been publicly listed since 1990 (TSX: KHD)
- carries out projects following the **Clean, Simple & Sound®** concept:
 - **Clean:** low-impact development of renewable energy resources
 - **Simple:** featuring a balanced portfolio of wind, hydro, and biomass facilities
 - **Sound:** with a proven ability to meet both the interest of investors and the needs of the environment

Where else does Canadian Hydro operate?



Photo by AerialFocus.ca

Ontario

- Melancthon I (Shelburne area) - wind
- Ragged Chute (Cobalt area) - hydroelectric
- Appleton (Ottawa Valley) - hydroelectric
- Moose Rapids (Sudbury area) - hydroelectric
- Galetta (Ottawa area) - hydroelectric
- Misema (New Liskeard area) - hydroelectric

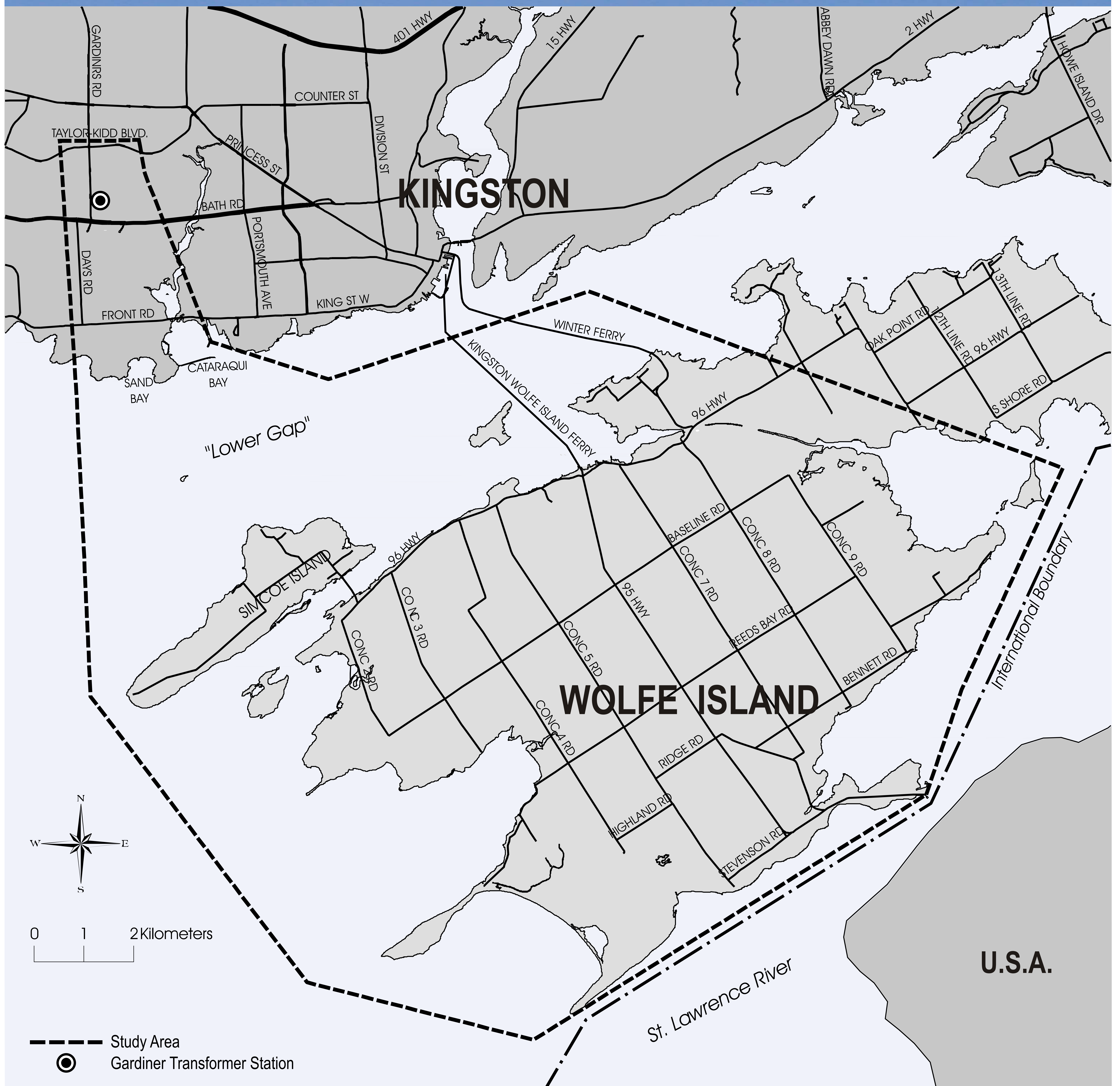
Alberta

- Cowley Ridge - wind
- Cowley North - wind
- Sinnott - wind
- Taylor - hydroelectric and wind
- Belly River - hydroelectric
- Waterton - hydroelectric
- St. Mary - hydroelectric
- Grande Prairie EcoPower® Centre - biomass (wood waste)

British Columbia

- Akolkolex - hydroelectric
- Pingston - hydroelectric
- Upper Mamquam - hydroelectric

Where is CREC planning to build the wind plant?



- Wind turbines and many of the ancillary facilities will be located on Wolfe Island
- Electricity will be transmitted from Wolfe Island to Hydro One Networks' Gardiner Transformer Station in the City of Kingston

Why is CREC building here?



Photo by AerialFocus.ca

- The Ontario Government is seeking to meet renewable energy targets and is encouraging the private sector to build and operate renewable energy facilities powered by wind, solar, and water
- Wolfe Island has strong, reliable winds
- A suitable interconnection point to the provincial grid exists at the Gardiner Transformer Station
- Local landowners want to participate
- Local stakeholders have and are continuing to demonstrate strong commitments to renewable energy projects

What is CREC planning to build?



- A wind project to generate 197.8 megawatts of renewable power
- Enough electricity to power approximately 75,000 Ontario households
- 86 wind turbines, placed through agreements with local landowners
- Ancillary facilities including an operation and maintenance building, access roads, land-based electrical lines, underwater transmission cable, and a transformer station
- A facility that helps Ontario achieve its target of 10% of its power production from renewable resources by 2010

What will be happening next?

Your continued input to the Environmental Screening Process is key. There is a great deal of work ahead, including:

2006: Spring

- Collect your ideas, comments, and suggestions from this Open House
- Conduct field inventories and data collection
- Continuation of the Environmental Screening Process
- Ongoing project design and refinement
- Another Open House to:
 - report back to you on the project's evolution
 - review information from the Environmental Screening Process
 - ask you for additional ideas, comments, and suggestions

2006: Summer / Autumn

- Finalize project design
- Completion of the Environmental Screening Report
- Secure remaining project approvals

2007: Winter

- Planned start of construction

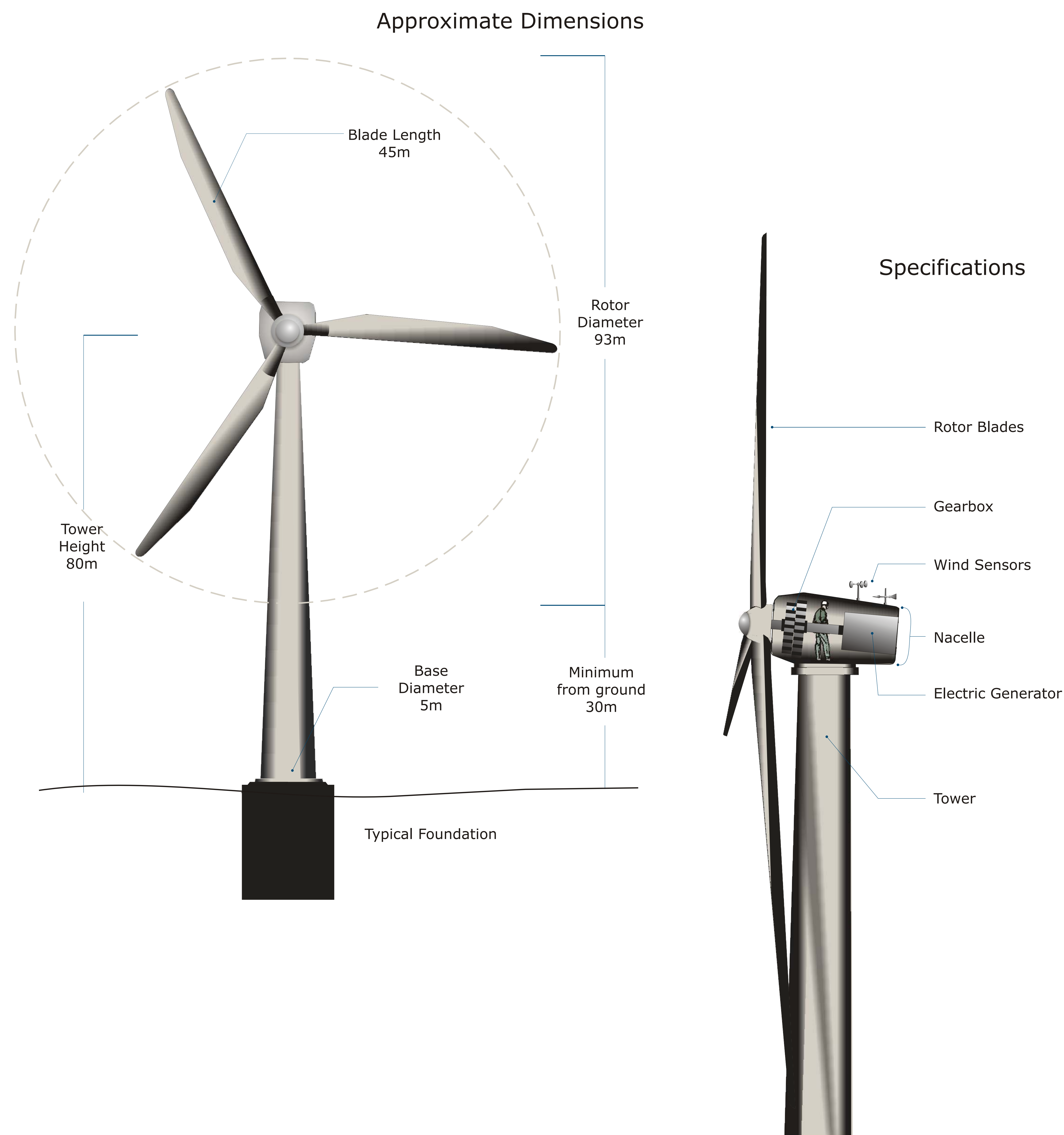
2008: Autumn

- Project in-service and producing renewable energy by fourth quarter



What will the wind turbines look like?

- Tower height: Each tower supporting the nacelle is about 80 metres high
- Rotor size: Each rotor blade is 45 metres in length
- Output: Spinning between 6 to 20 times per minute, each turbine can generate up to 2.3 megawatts of electricity, enough to power more than 870 average residential homes



Canadian Hydro's Melancthon I Wind Plant,
Township of Melancthon, County of Dufferin

What is the Environmental Screening Process (ESP)?

- The Environmental Screening Process, or ESP, is a process established by the Ontario Ministry of the Environment for electricity projects under Ontario Regulation 116/01 of the *Environmental Assessment Act*
- The ESP works best when local stakeholders get involved
- The ESP will help CREC design a project that provides for the protection, conservation, and wise management of the environment
- The ESP includes studies of the natural environment (such as wildlife, vegetation and fish habitat), the socio-economic environment (such as recreation, employment and land use), and the physical environment (such as soils, climate and water quality)



What is the Canadian Environmental Assessment Act (CEAA)?

- CEAA is a federal environmental process overseen by the Canadian Environmental Assessment Agency
- CEAA applies to projects where the federal government has decision-making authority such as issuing a permit or approval, providing funding, or allocating land
- Planning for the Wolfe Island Wind Project addresses CEAA's guiding principles:
 - achieving sustainable development through high quality environmental assessment
 - integrating environmental factors into planning and decision-making processes
 - anticipating and preventing degradation of environmental quality
 - undertaking stakeholder participation
- CREC is fulfilling the requirements of CEAA concurrently with the provincial ESP



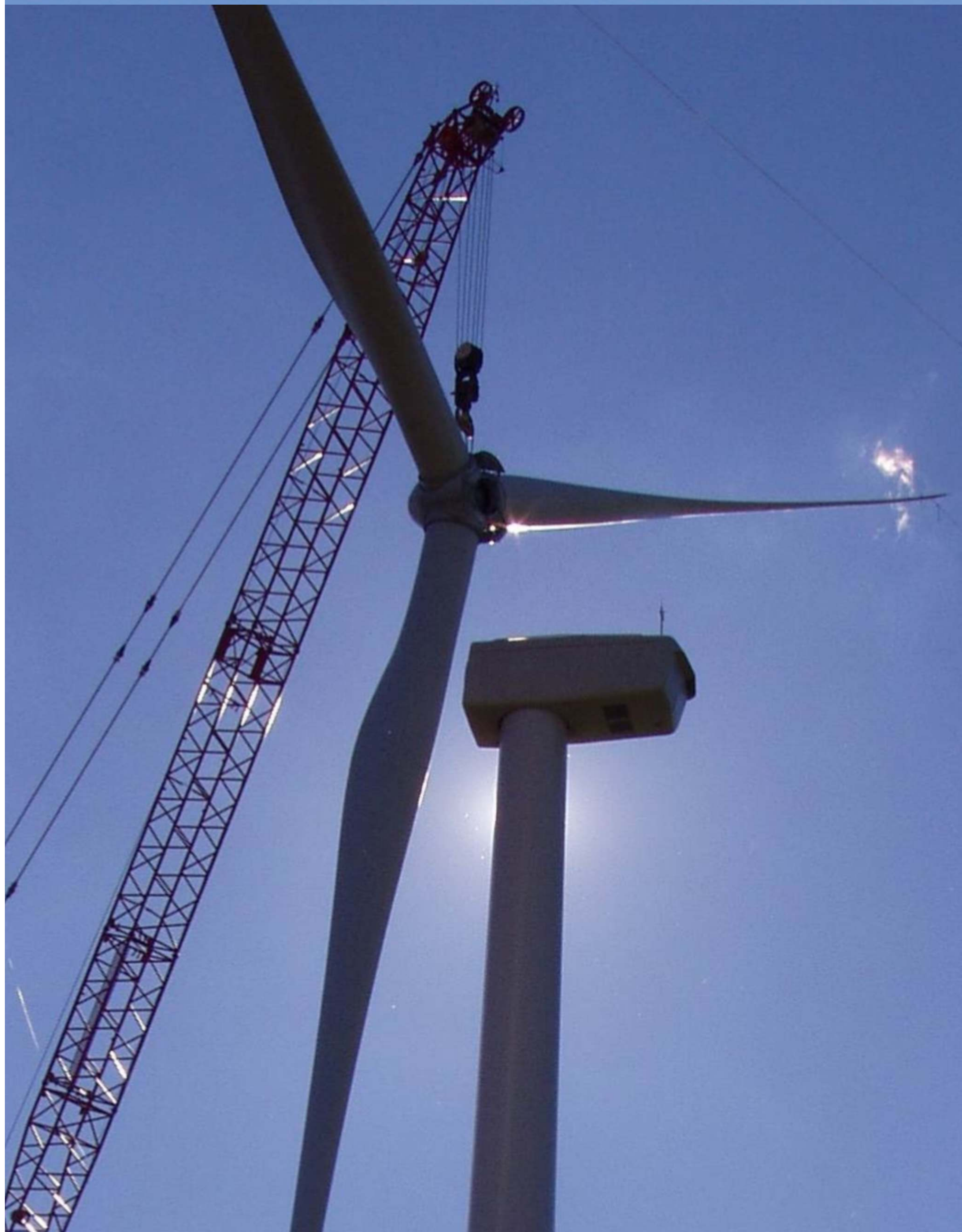
Project History

- 1995** Wind data collection and analysis begins on Wolfe Island
- 2002** CREC starts the ESP for a 24 MW wind plant on Wolfe Island (13, 1.8 MW wind turbines)
- 2003** CREC completes the ESP for the 24 MW wind plant on Wolfe Island
- 2003** Gaia Power Inc. (“GAIA”) and Heartmakers Energy Cooperative begin the ESP for a 36 MW wind plant on Wolfe Island (24, 1.5 MW wind turbines)
- 2004** CREC, building on the completed 2003 project design, starts ESP for an additional 100.65 MW of wind energy (61, 1.65 MW wind turbines)
- 2004** GAIA starts the ESP for an additional 100 MW of wind energy (66, 1.5 MW wind turbines)
- 2005** CREC and GAIA pursue one integrated project for the Renewables II RFP with CREC as lead proponent: the current Wolfe Island Wind Project consisting of 197.8 MW of wind energy (86, 2.3 MW wind turbines)
- 2005** CREC awarded a 20-year Renewable Energy Supply Contract from the Ontario Power Authority
- Present** CREC continues the ESP, which includes this Public Open House

Stakeholder consultation activities throughout the Wolfe Island Wind Project's history have included:

- Public notices
- Direct mailings to stakeholders
- Newspaper ads
- Public Open Houses
- Public Workshops
- Establishment of a project website (www.wolfeislandwind.com)
- A tour of an existing wind plant in the U.S.A.

Your input to the Environmental Screening Process is important!



Please let us know your ideas, comments, and suggestions on the Wolfe Island Wind Project

You can contact us by:

Facsimile: 1-519-836-2493

Website: www.wolfeislandwind.com

Email: comments@wolfeislandwind.com

Phone: 1-519-836-6050 (call collect)

Or write to us:

Rob Nadolny
Senior Project Manager
Stantec Consulting, Ltd.
361 Southgate Drive
Guelph, Ontario
N1G 3M5

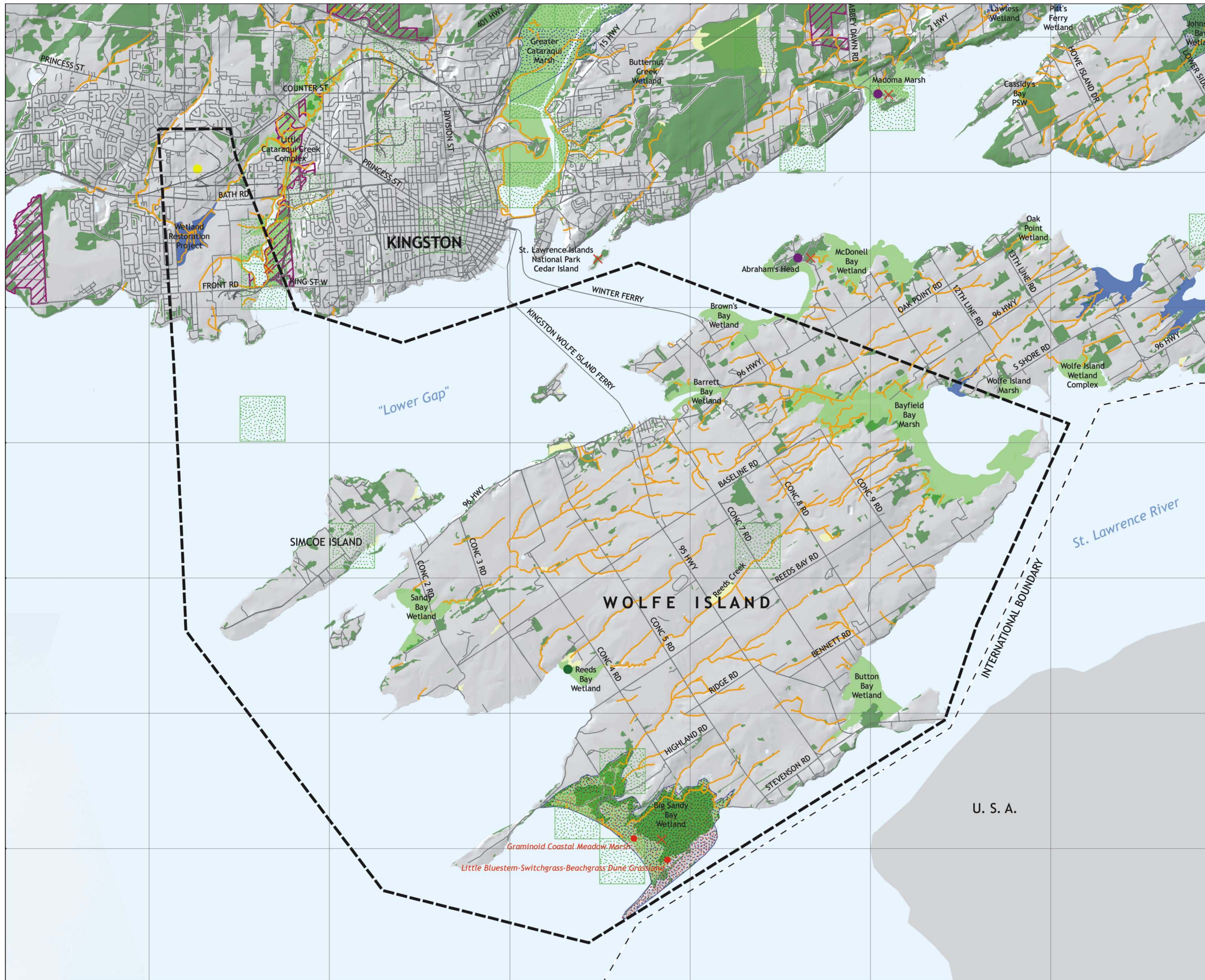
Geoff Carnegie/Scott Hossie
Canadian Renewable Energy Corporation
c/o 52 Hildale Crescent
Guelph, Ontario
N1G 4B8

Benefits of wind energy

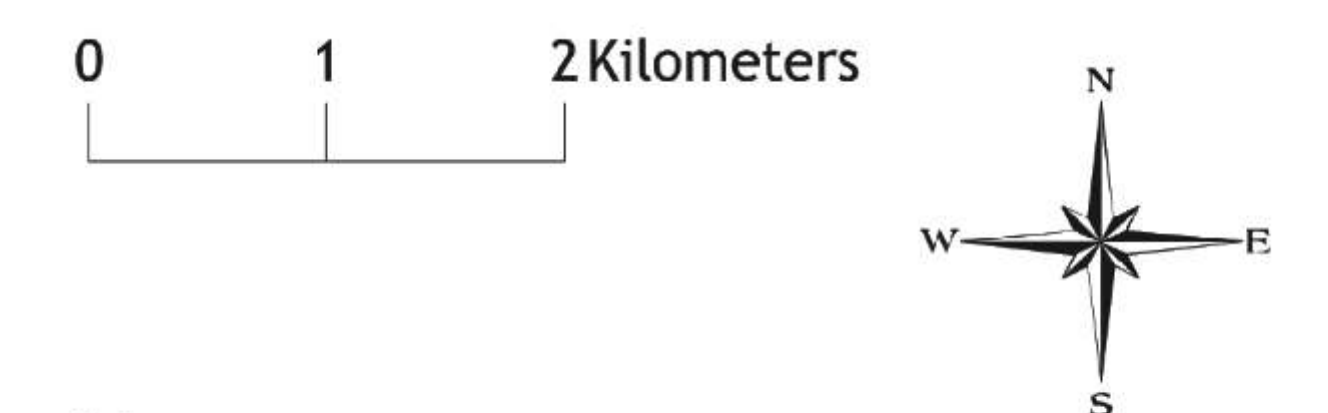


- Wind energy is clean - it does not produce any air pollution during operation
- Wind energy is one of the most economical sources of new large-scale electricity generation
- Wind energy is becoming even more economic to produce as economies of scale are reached
- Renewable, reliable, efficient, and infinitely sustainable
- Wind energy is associated with few environmental effects compared with other sources of electricity generation
- Wind energy reduces our contribution to global climate change
- Part of an overall solution to Ontario's forecasted electricity needs

Key Natural Features Identified To Date



- Legend**
- Study Area
 - Gardiner Transformer Station
 - Earth Science Site
 - ✕ International Biological Program Site
 - Life Science Site
 - Vegetation Communities
 - Warm water streams
 - Cataraqui Region Conservation Authority Lands
 - Rare species occurrence
 - Woodlot
 - Area of natural or scientific interest (ANSI)**
 - Earth
 - Life
 - Wetlands**
 - Provincially significant wetland
 - Non-provincially significant wetland
 - Unevaluated wetland



Notes:
 Base map layers: MNR Land Information Distribution Service (LIDS) and the Cataraqui Region Conservation Authority, 2006. Natural environmental features and hydrological data is from the Ministry of Natural Resources Peterborough District NRVIS 2006, and the Cataraqui Region Conservation Authority, 2006.






Transmission Line - Preliminary Preferred Route

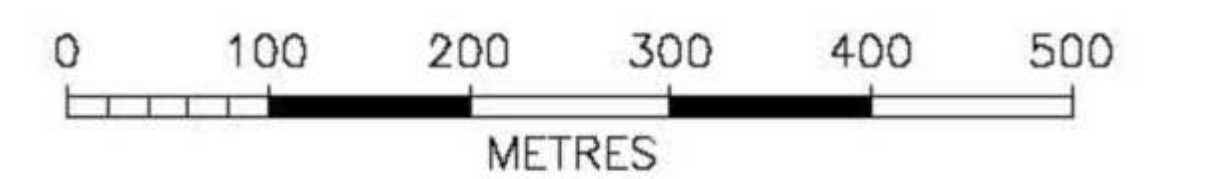


NOTES

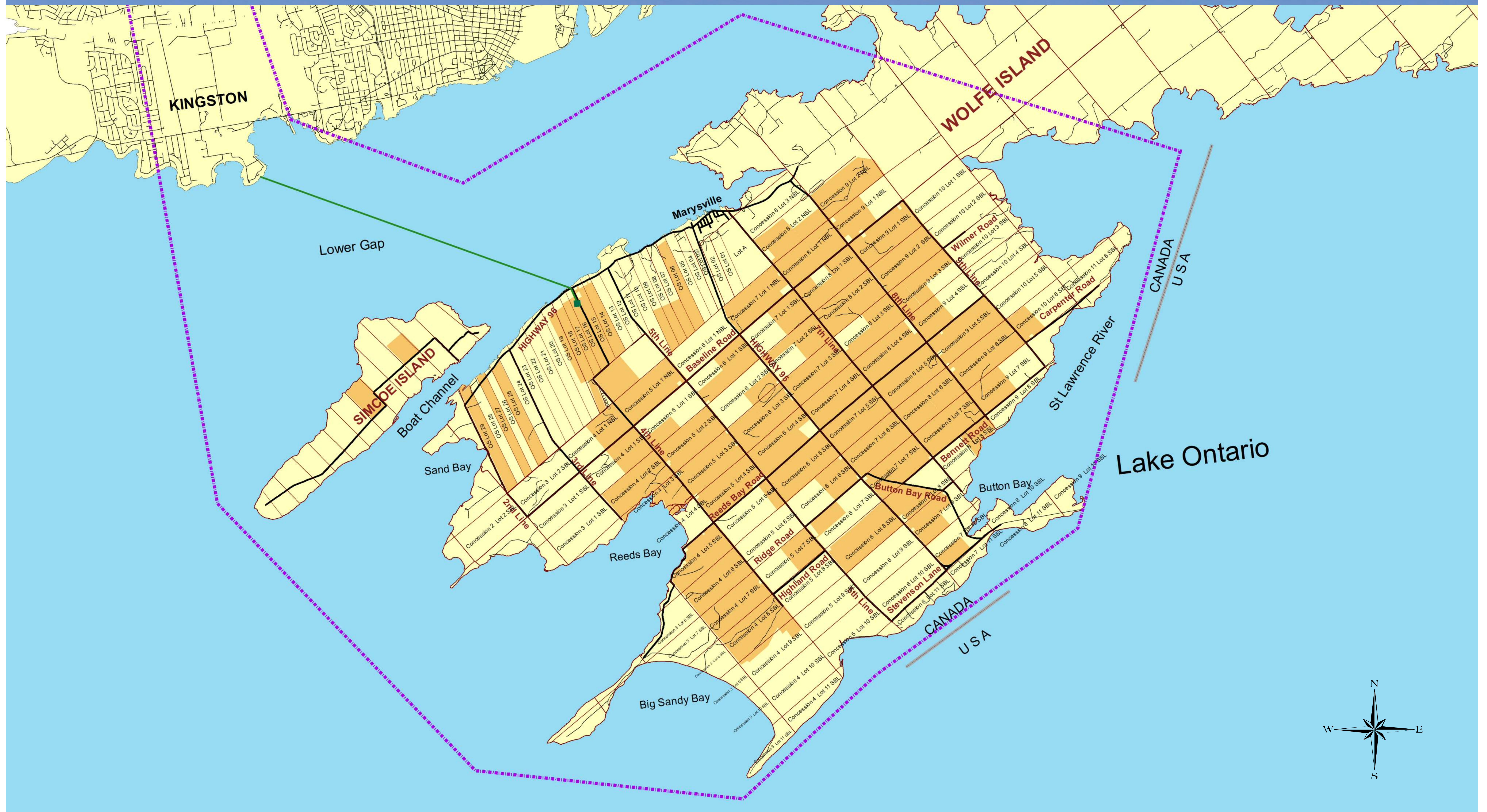
1. ALL DIMENSIONS AND ELEVATIONS ARE IN METRES, UNLESS NOTED OTHERWISE.
2. BASE MAPPING FROM LIDAR PHOTO, FLOWN JANUARY 2006.
3. LOCATION OF EXISTING TRANSMISSION LINES TO BE FIELD CONFIRMED.

LEGEND

-  RAILWAY
-  EXISTING TRANSMISSION LINE
-  PROPOSED OVERHEAD TRANSMISSION LINE
-  PROPOSED TRENCHED TRANSMISSION LINE
-  PROPOSED BORED TRANSMISSION LINE

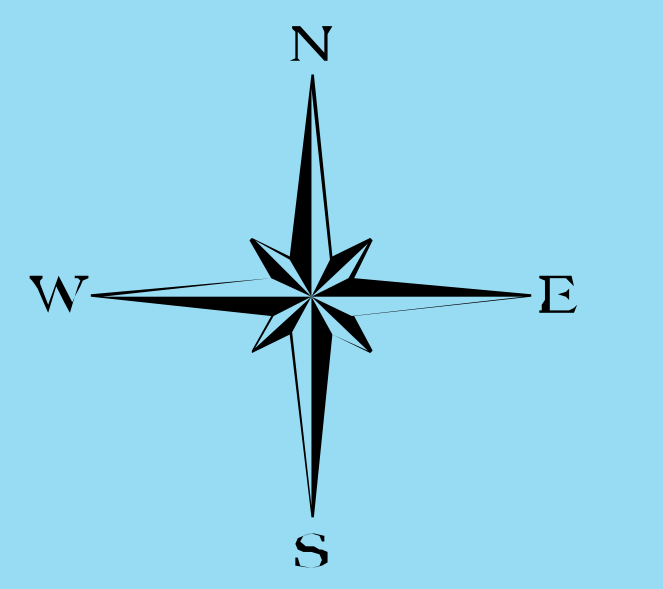
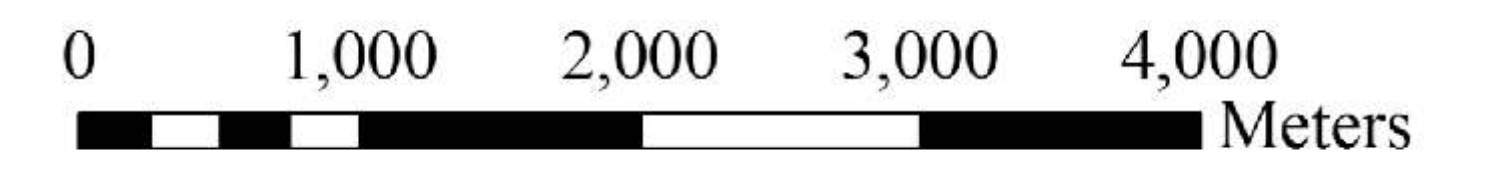


Lands Under Option



Legend

- Option and Licence to Lease Agreements
- Existing Roads
- Lot Lines
- Study Area
- 34.5/230 kV Substation (Preliminary Location)
- 230 kV Powerline (underwater)



60990058_D_20.cdr



Wolfe Island Wind Project

