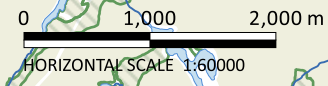
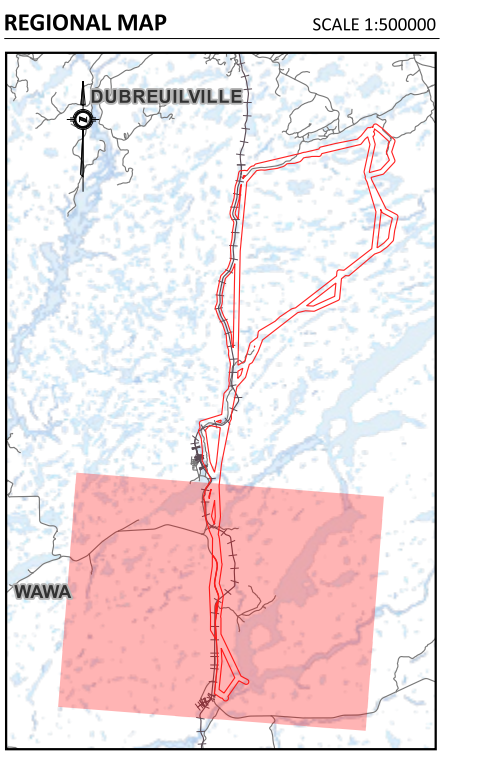


- LEGEND**
- - - Study Area
 - ▨ Unevaluated Wetland
 - ▨ Permanent Watercourse
 - ▨ Waterbody
 - ▨ Wooded Area
 - Road
 - Highway
 - + + + Rail
 - + Stations
- Proposed Alternative Solutions**
- Alternative Solution #1
 - Alternative Solution #2
 - Alternative Solution #3
 - Alternative Solution #4

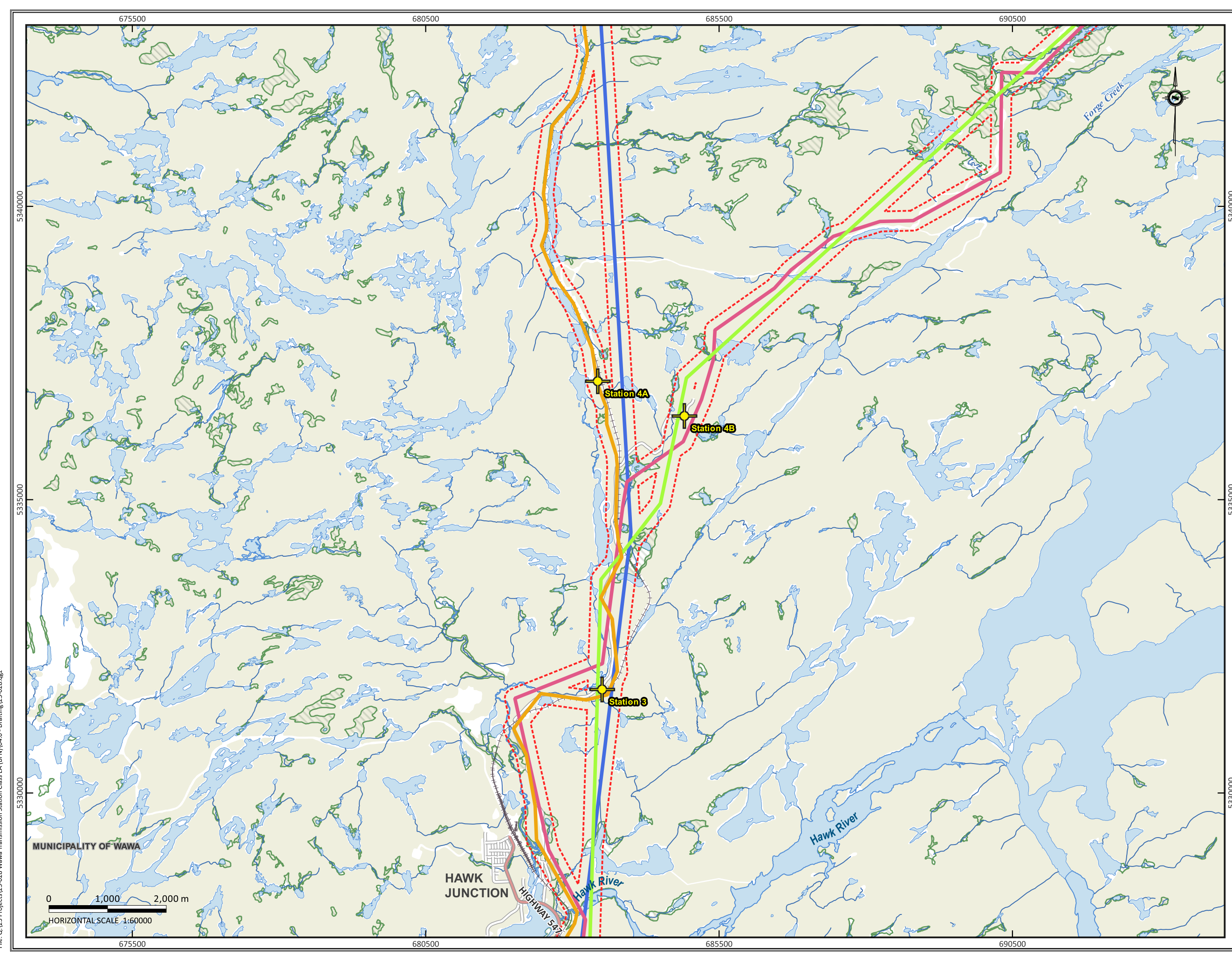


STUDY AREA

TRANSMISSION SYSTEM PROJECT
WAWA, ON

DATE ISSUED:	SEPTEMBER 2024	DRAWING NO.: 1-01
CREATED BY:	A.L.	
PROJECT NO.:	23-028	
BASE MAP:	MNRF	

File: Q:\23 Projects\23-028 Wawa Transmission Station Class EA (BPN)\04.0 - Drafting\23-028.dwg

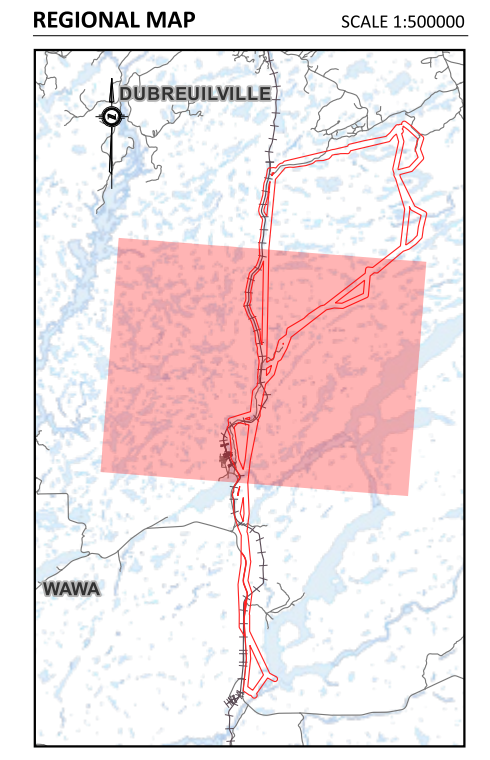


LEGEND

- Study Area
- Unevaluated Wetland
- Permanent Watercourse
- Waterbody
- Wooded Area
- Road
- Highway
- Rail
- + Stations

Proposed Alternative Solutions

- Alternative Solution #1
- Alternative Solution #2
- Alternative Solution #3
- Alternative Solution #4

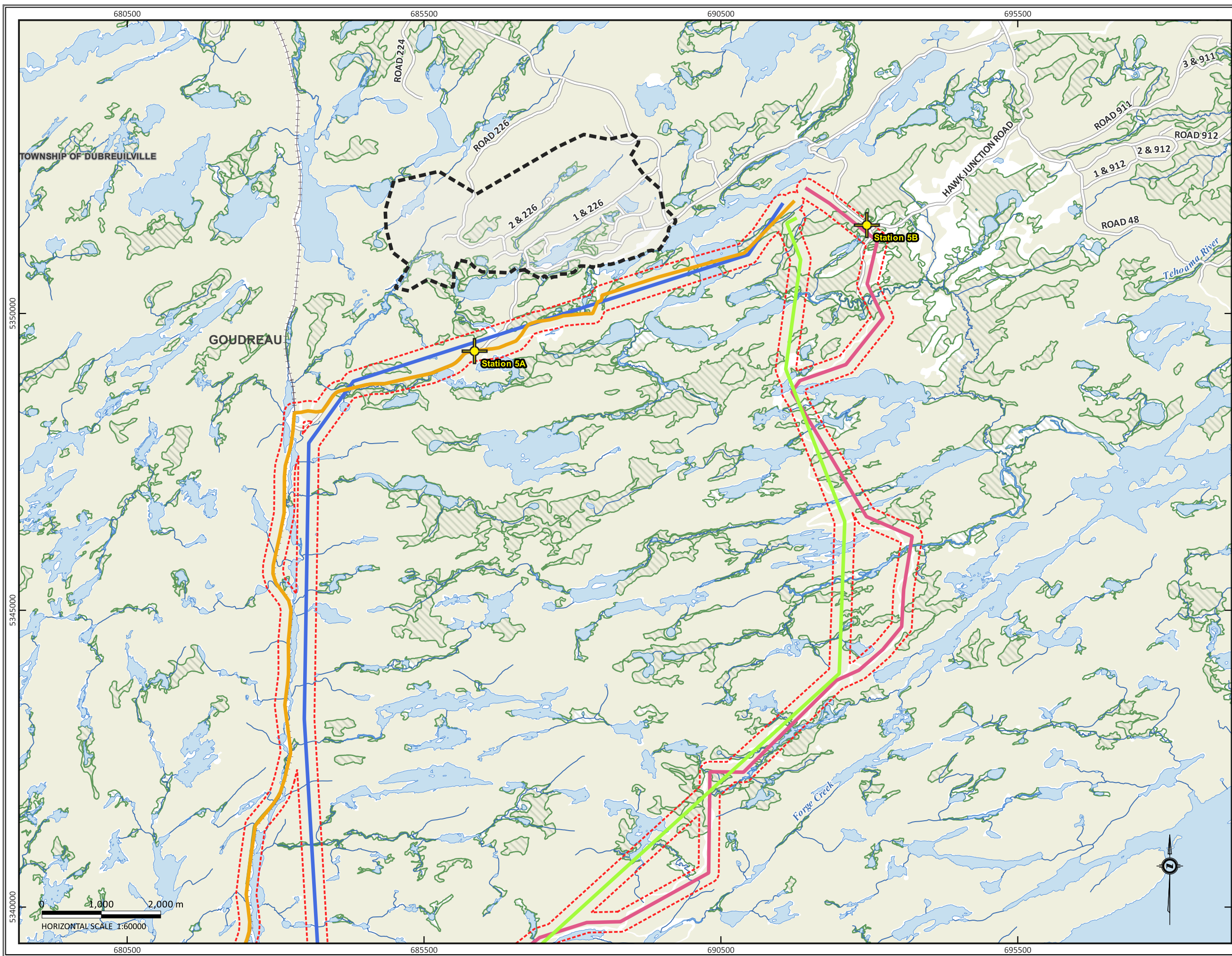


STUDY AREA

TRANSMISSION SYSTEM PROJECT
WAWA, ON

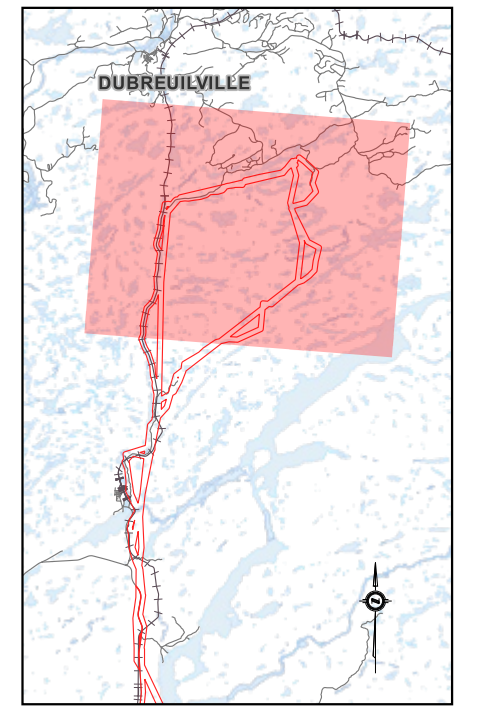
DATE ISSUED: SEPTEMBER 2024	DRAWING NO.:
CREATED BY: A.L.	1-02
PROJECT NO.: 23-028	
BASE MAP: MNRF	

File: Q:\23 Projects\23-028 Wawa Transmission Station Class EA (BPN)\04.0 - Drafting\23-028.dwg



- LEGEND**
- - - Study Area
 - ▨ Unevaluated Wetland
 - ▨ Permanent Watercourse
 - ▨ Waterbody
 - ▨ Wooded Area
 - ▨ Road
 - ▨ Rail
 - + Stations
 - ▨ Mine Site
- Proposed Alternative Solutions**
- Alternative Solution #1
 - Alternative Solution #2
 - Alternative Solution #3
 - Alternative Solution #4

REGIONAL MAP SCALE 1:500000

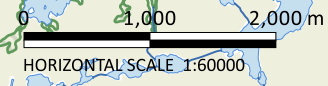


STUDY AREA

TRANSMISSION SYSTEM PROJECT
WAWA, ON

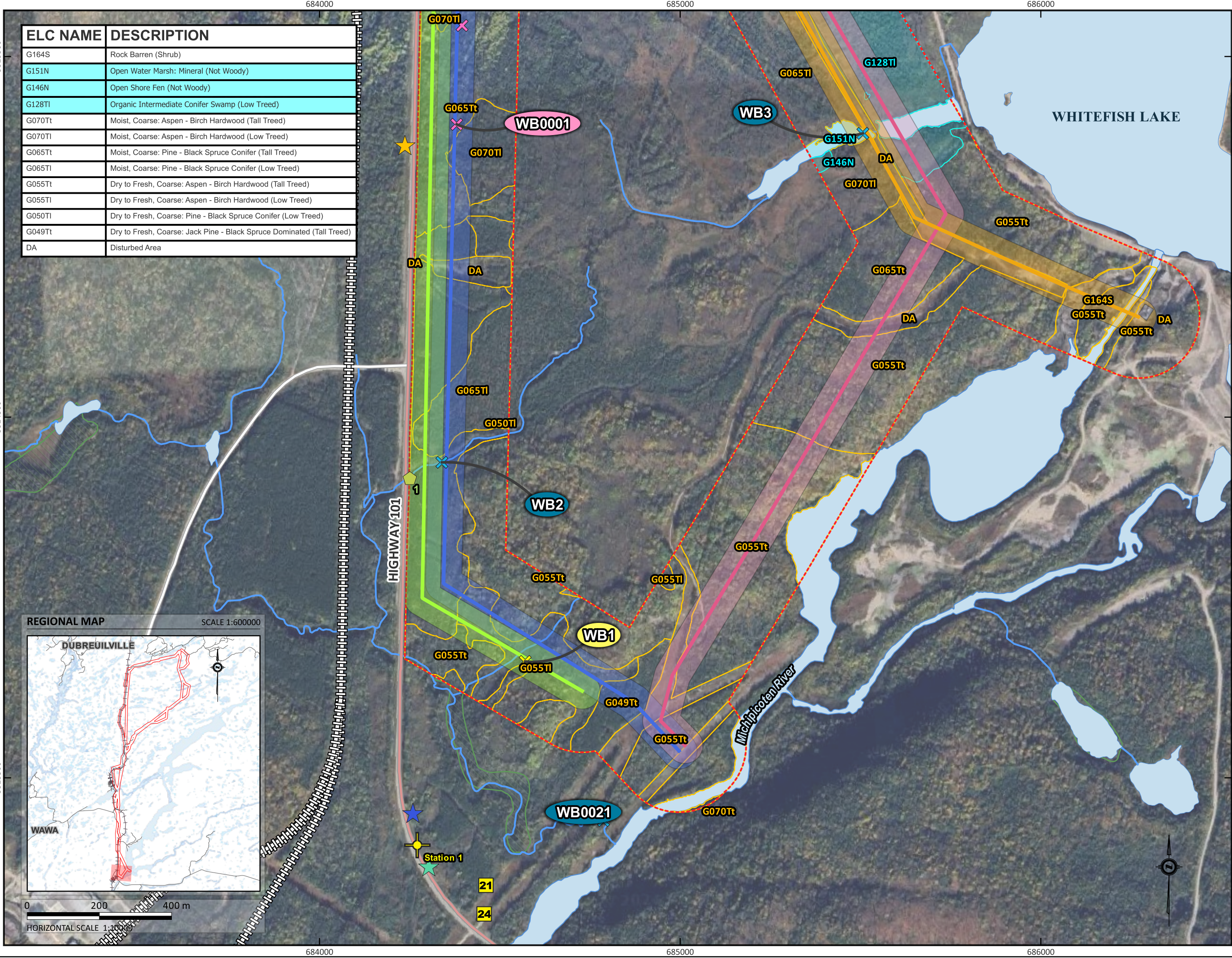
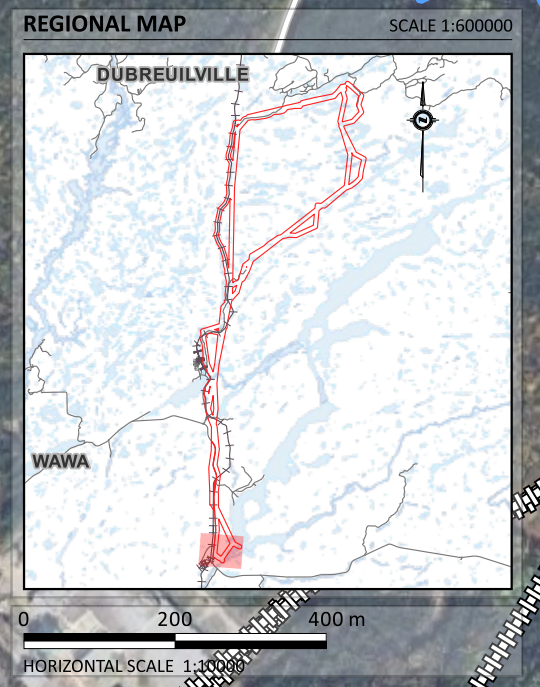
DATE ISSUED:	SEPTEMBER 2024	DRAWING NO.: 1-03
CREATED BY:	A.L.	
PROJECT NO.:	23-028	
BASE MAP:	MNRF	

File: Q:\23 Projects\23-028 Wawa Transmission Station Class EA (BPN)\04.0 - Drafting\23-028.dwg



ELC NAME	DESCRIPTION
G164S	Rock Barren (Shrub)
G151N	Open Water Marsh: Mineral (Not Woody)
G146N	Open Shore Fen (Not Woody)
G128TI	Organic Intermediate Conifer Swamp (Low Treed)
G070Tt	Moist, Coarse: Aspen - Birch Hardwood (Tall Treed)
G070Ti	Moist, Coarse: Aspen - Birch Hardwood (Low Treed)
G065Tt	Moist, Coarse: Pine - Black Spruce Conifer (Tall Treed)
G065Ti	Moist, Coarse: Pine - Black Spruce Conifer (Low Treed)
G055Tt	Dry to Fresh, Coarse: Aspen - Birch Hardwood (Tall Treed)
G055Ti	Dry to Fresh, Coarse: Aspen - Birch Hardwood (Low Treed)
G050Ti	Dry to Fresh, Coarse: Pine - Black Spruce Conifer (Low Treed)
G049Ti	Dry to Fresh, Coarse: Jack Pine - Black Spruce Dominated (Tall Treed)
DA	Disturbed Area

- LEGEND**
- Study Area
 - Mapped Watercourse
 - Waterbody
 - Unevaluated Wetland
 - Rail
 - Stations
- Waterbody Crossings - Fish Habitat & Thermal Regime**
- Direct Coldwater
 - Indirect Coldwater
 - Indirect Coolwater
- ELC Communities**
- Upland ELC Communities
 - Wetland ELC Communities
- Proposed Alternative Solutions**
- Alternative Solution #1
 - Alternative Solution #2
 - Alternative Solution #3
 - Alternative Solution #4
- Potential Infrastructure Areas**
- Infrastructure Area #1
 - Infrastructure Area #2
 - Infrastructure Area #3
 - Infrastructure Area #4
 - Wildlife Camera Location
 - Turtle Survey
- Direct Wildlife Observations - i.e., Visual or Auditory Confirmation**
- Monarch
 - Moose
 - Red Squirrel



EXISTING CONDITIONS AND PROPOSED ROUTES

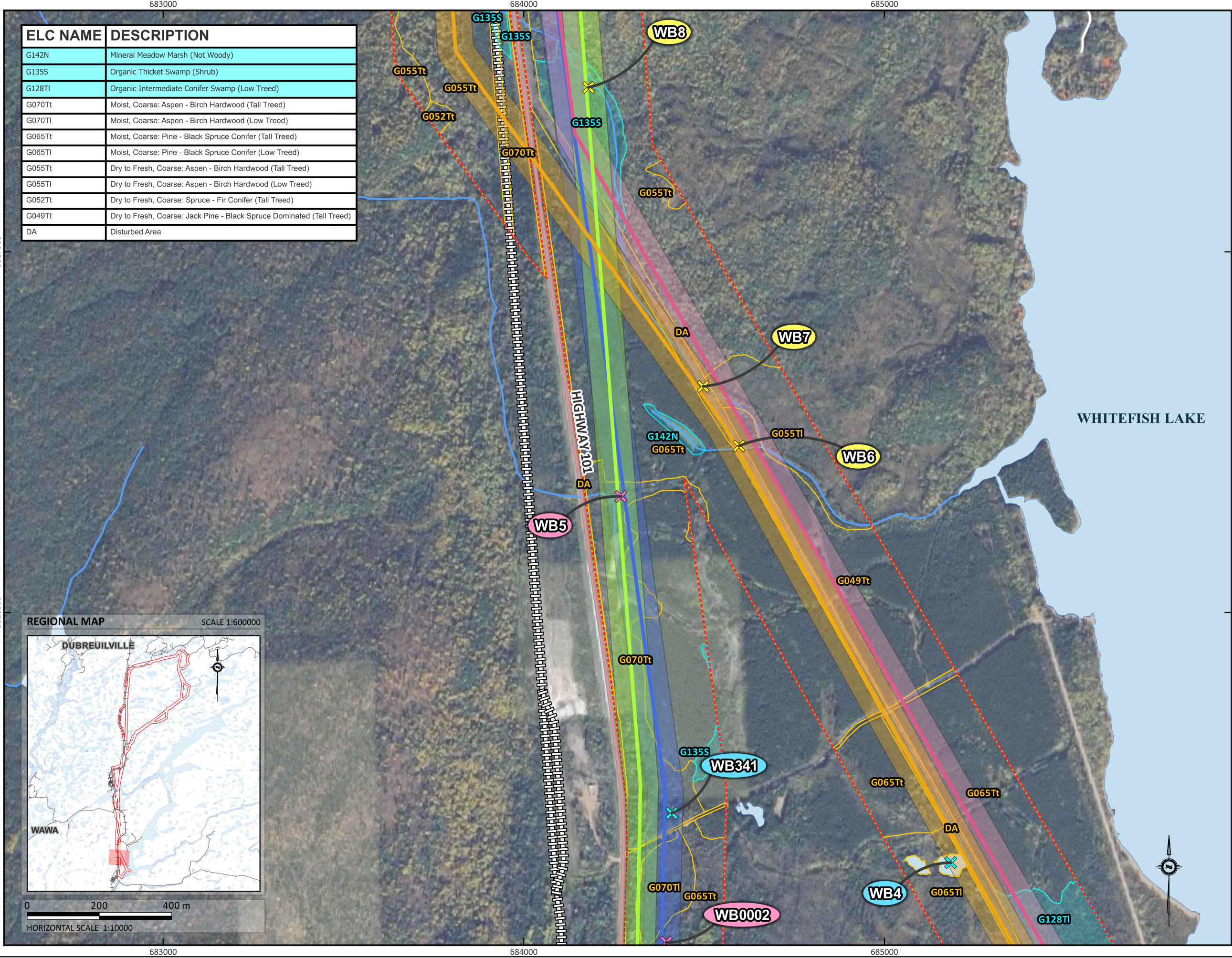
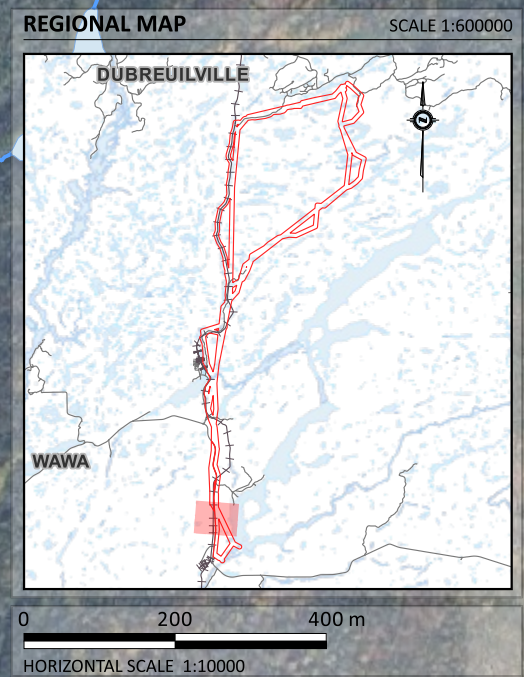
TRANSMISSION SYSTEM PROJECT
WAWA, ON

DATE ISSUED:	SEPTEMBER 2024	DRAWING NO.:	2-01
CREATED BY:	A.L.		
PROJECT NO.:	23-028		
BASE MAP:	MNRF		

File: Q:\23 Projects\23-028 Wawa Transmission Station Class EA (BPN)\04.0 - Drafting\23-028.dwg

ELC NAME	DESCRIPTION
G142N	Mineral Meadow Marsh (Not Woody)
G135S	Organic Thicket Swamp (Shrub)
G128TI	Organic Intermediate Conifer Swamp (Low Treed)
G070Tt	Moist, Coarse: Aspen - Birch Hardwood (Tall Treed)
G070TI	Moist, Coarse: Aspen - Birch Hardwood (Low Treed)
G065Tt	Moist, Coarse: Pine - Black Spruce Conifer (Tall Treed)
G065TI	Moist, Coarse: Pine - Black Spruce Conifer (Low Treed)
G055Tt	Dry to Fresh, Coarse: Aspen - Birch Hardwood (Tall Treed)
G055TI	Dry to Fresh, Coarse: Aspen - Birch Hardwood (Low Treed)
G052Tt	Dry to Fresh, Coarse: Spruce - Fir Conifer (Tall Treed)
G049Tt	Dry to Fresh, Coarse: Jack Pine - Black Spruce Dominated (Tall Treed)
DA	Disturbed Area

- LEGEND**
- Study Area
 - Mapped Watercourse
 - Waterbody
 - Unevaluated Wetland
 - Rail
- Waterbody Crossings - Fish Habitat & Thermal Regime**
- ✕ Indirect Coldwater
 - ✕ Direct Coolwater
 - ✕ Indirect Coolwater
- ELC Communities**
- Upland ELC Communities
 - Wetland ELC Communities
- Proposed Alternative Solutions**
- Alternative Solution #1
 - Alternative Solution #2
 - Alternative Solution #3
 - Alternative Solution #4
- Potential Infrastructure Areas**
- Infrastructure Area #1
 - Infrastructure Area #2
 - Infrastructure Area #3
 - Infrastructure Area #4

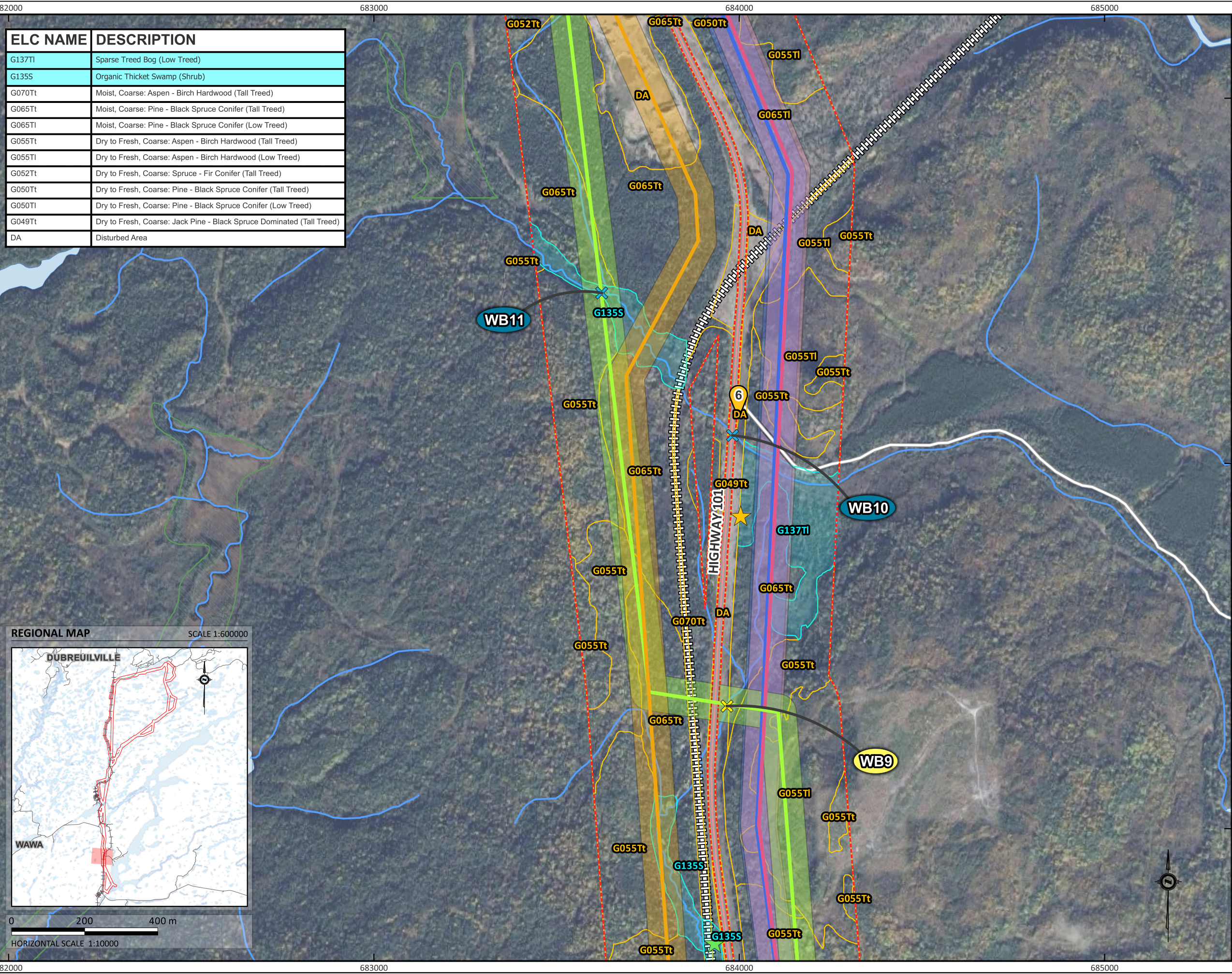


EXISTING CONDITIONS AND PROPOSED ROUTES

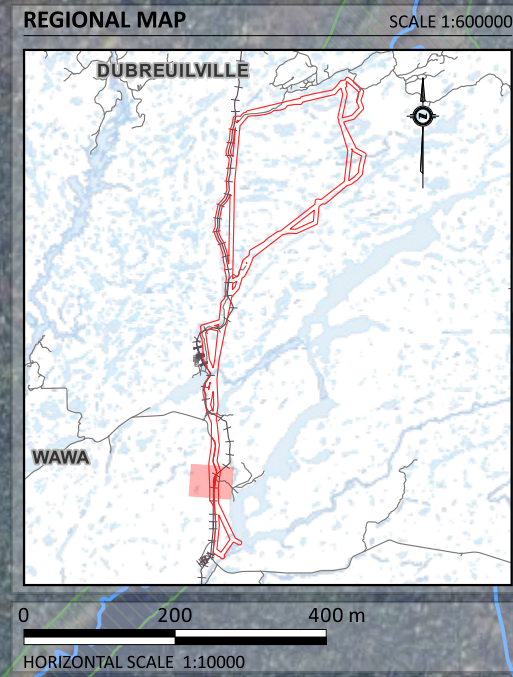
TRANSMISSION SYSTEM PROJECT
WAWA, ON

DATE ISSUED: SEPTEMBER 2024	DRAWING NO.:
CREATED BY: A.L.	2-02
PROJECT NO.: 23-028	
BASE MAP: MNRF	

File: Q:\23 Projects\23-028 Wawa Transmission Station Class EA (BFN)\04.0 - Drafting\23-028.dwg



ELC NAME	DESCRIPTION
G137TI	Sparse Treed Bog (Low Treed)
G135S	Organic Thicket Swamp (Shrub)
G070Tt	Moist, Coarse: Aspen - Birch Hardwood (Tall Treed)
G065Tt	Moist, Coarse: Pine - Black Spruce Conifer (Tall Treed)
G065Ti	Moist, Coarse: Pine - Black Spruce Conifer (Low Treed)
G055Tt	Dry to Fresh, Coarse: Aspen - Birch Hardwood (Tall Treed)
G055Ti	Dry to Fresh, Coarse: Aspen - Birch Hardwood (Low Treed)
G052Tt	Dry to Fresh, Coarse: Spruce - Fir Conifer (Tall Treed)
G050Tt	Dry to Fresh, Coarse: Pine - Black Spruce Conifer (Tall Treed)
G050Ti	Dry to Fresh, Coarse: Pine - Black Spruce Conifer (Low Treed)
G049Tt	Dry to Fresh, Coarse: Jack Pine - Black Spruce Dominated (Tall Treed)
DA	Disturbed Area



- LEGEND**
- Study Area
 - Mapped Watercourse
 - Waterbody
 - Unevaluated Wetland
 - Rail
- Waterbody Crossings - Fish Habitat & Thermal Regime**
- Direct Coldwater
 - Indirect Coldwater
- ELC Communities**
- Upland ELC Communities
 - Wetland ELC Communities
- Proposed Alternative Solutions**
- Alternative Solution #1
 - Alternative Solution #2
 - Alternative Solution #3
 - Alternative Solution #4
- Potential Infrastructure Areas**
- Infrastructure Area #1
 - Infrastructure Area #2
 - Infrastructure Area #3
 - Infrastructure Area #4
- Direct Wildlife Observations - i.e., Visual or Auditory Confirmation**
- Moose
 - Spring Peeper
 - 2024 Dawn Breeding Bird Survey Location Only



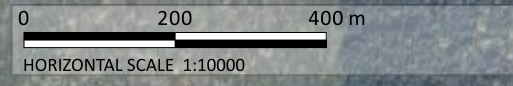
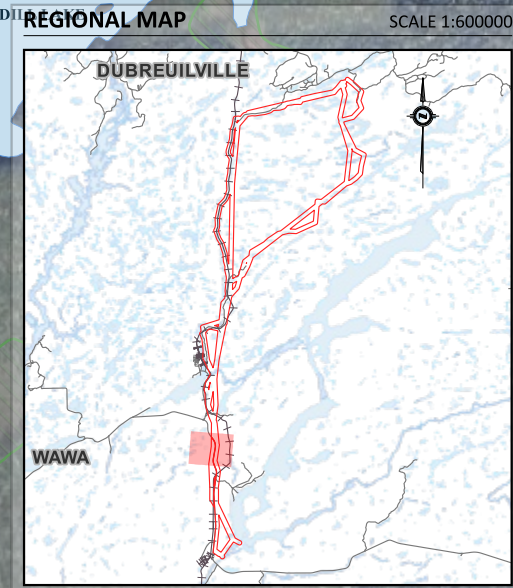
EXISTING CONDITIONS AND PROPOSED ROUTES

TRANSMISSION SYSTEM PROJECT
WAWA, ON

DATE ISSUED:	SEPTEMBER 2024	DRAWING NO.:
CREATED BY:	A.L.	2-03
PROJECT NO.:	23-028	
BASE MAP:	MNRF	

File: Q:\23 Projects\23-028 Wawa Transmission Station Class EA (BPN)\04.0 - Drafting\23-028.dwg

ELC NAME	DESCRIPTION
G134S	Mineral Thicket Swamp (Shrub)
G128TI	Organic Intermediate Conifer Swamp (Low Treed)
G070Tt	Moist, Coarse: Aspen - Birch Hardwood (Tall Treed)
G065Tt	Moist, Coarse: Pine - Black Spruce Conifer (Tall Treed)
G065TI	Moist, Coarse: Pine - Black Spruce Conifer (Low Treed)
G055Tt	Dry to Fresh, Coarse: Aspen - Birch Hardwood (Tall Treed)
G055TI	Dry to Fresh, Coarse: Aspen - Birch Hardwood (Low Treed)
G052Tt	Dry to Fresh, Coarse: Spruce - Fir Conifer (Tall Treed)
G050Tt	Dry to Fresh, Coarse: Pine - Black Spruce Conifer (Tall Treed)
G049TI	Dry to Fresh, Coarse: Jack Pine - Black Spruce Dominated (Low Treed)
G016TI	Very Shallow, Dry to Fresh: Aspen - Birch Hardwood (Low Treed)
DA	Disturbed Area



LEGEND

- Study Area (Red dashed line)
- Mapped Watercourse (Blue line)
- Waterbody (Light blue area)
- Unevaluated Wetland (Green hatched area)
- Stations (Black cross symbol)

Waterbody Crossings - Fish Habitat & Thermal Regime

- Indirect Coldwater (Yellow X symbol)
- Direct Coolwater (Cyan X symbol)
- Indirect Coolwater (Pink X symbol)

ELC Communities

- Upland ELC Communities (Yellow outline)
- Wetland ELC Communities (Cyan outline)

Proposed Alternative Solutions

- Alternative Solution #1 (Blue line)
- Alternative Solution #2 (Pink line)
- Alternative Solution #3 (Orange line)
- Alternative Solution #4 (Green line)

Potential Infrastructure Areas

- Infrastructure Area #1 (Light blue area)
- Infrastructure Area #2 (Light pink area)
- Infrastructure Area #3 (Light orange area)
- Infrastructure Area #4 (Light green area)
- Wildlife Camera Location (Yellow square with #)

Direct Wildlife Observations - i.e., Visual or Auditory Confirmation

- Least Skipper (Light blue star)
- Monarch (Light green star)
- Red Squirrel (Blue star)
- Sandhill Crane (Orange star)

Indirect Wildlife Observations - i.e., Tracks, Scat, Beaver Lodges

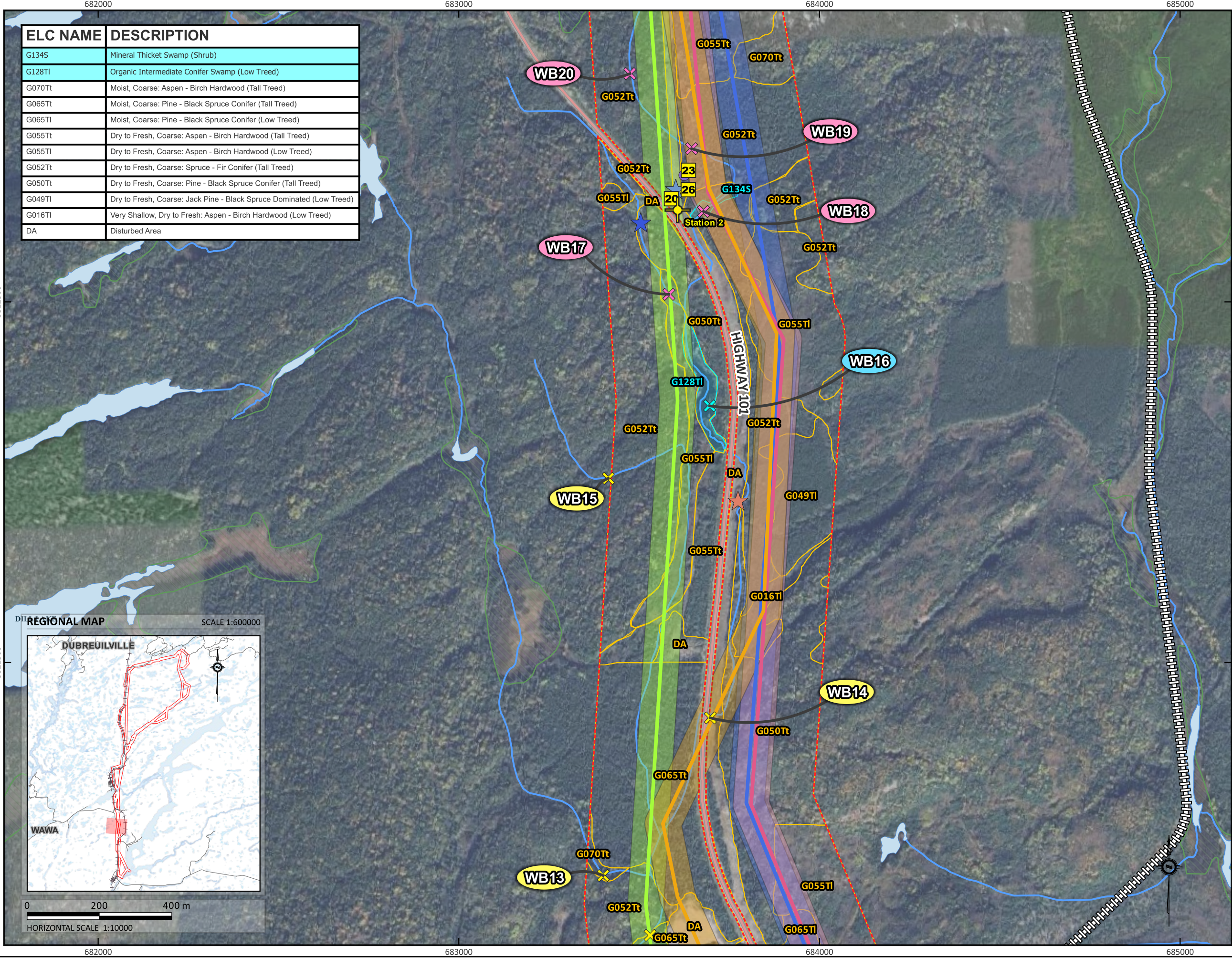
- Moose (Purple circle)



EXISTING CONDITIONS AND PROPOSED ROUTES

TRANSMISSION SYSTEM PROJECT
WAWA, ON

DATE ISSUED:	SEPTEMBER 2024	DRAWING NO.:	2-04
CREATED BY:	A.L.		
PROJECT NO.:	23-028		
BASE MAP:	MNRF		



File: Q:\23 Projects\23-028 Wawa Transmission Station Class EA (BPN)\04.0 - Drafting\23-028.dwg

ELC NAME	DESCRIPTION
G142N	Mineral Meadow Marsh (Not Woody)
G128TI	Organic Intermediate Conifer Swamp (Low Treed)
G070Tt	Moist, Coarse: Aspen - Birch Hardwood (Tall Treed)
G065Tt	Moist, Coarse: Pine - Black Spruce Conifer (Tall Treed)
G055Tt	Dry to Fresh, Coarse: Aspen - Birch Hardwood (Tall Treed)
G055Ti	Dry to Fresh, Coarse: Aspen - Birch Hardwood (Low Treed)
G052Tt	Dry to Fresh, Coarse: Spruce - Fir Conifer (Tall Treed)
G050Tt	Dry to Fresh, Coarse: Pine - Black Spruce Conifer (Tall Treed)
G049Tt	Dry to Fresh, Coarse: Jack Pine - Black Spruce Dominated (Tall Treed)
DA	Disturbed Area

LEGEND

- Study Area
- Mapped Watercourse
- Waterbody
- Unevaluated Wetland
- Rail

Waterbody Crossings - Fish Habitat & Thermal Regime

- Direct Coldwater
- Indirect Coldwater
- Indirect Coolwater

ELC Communities

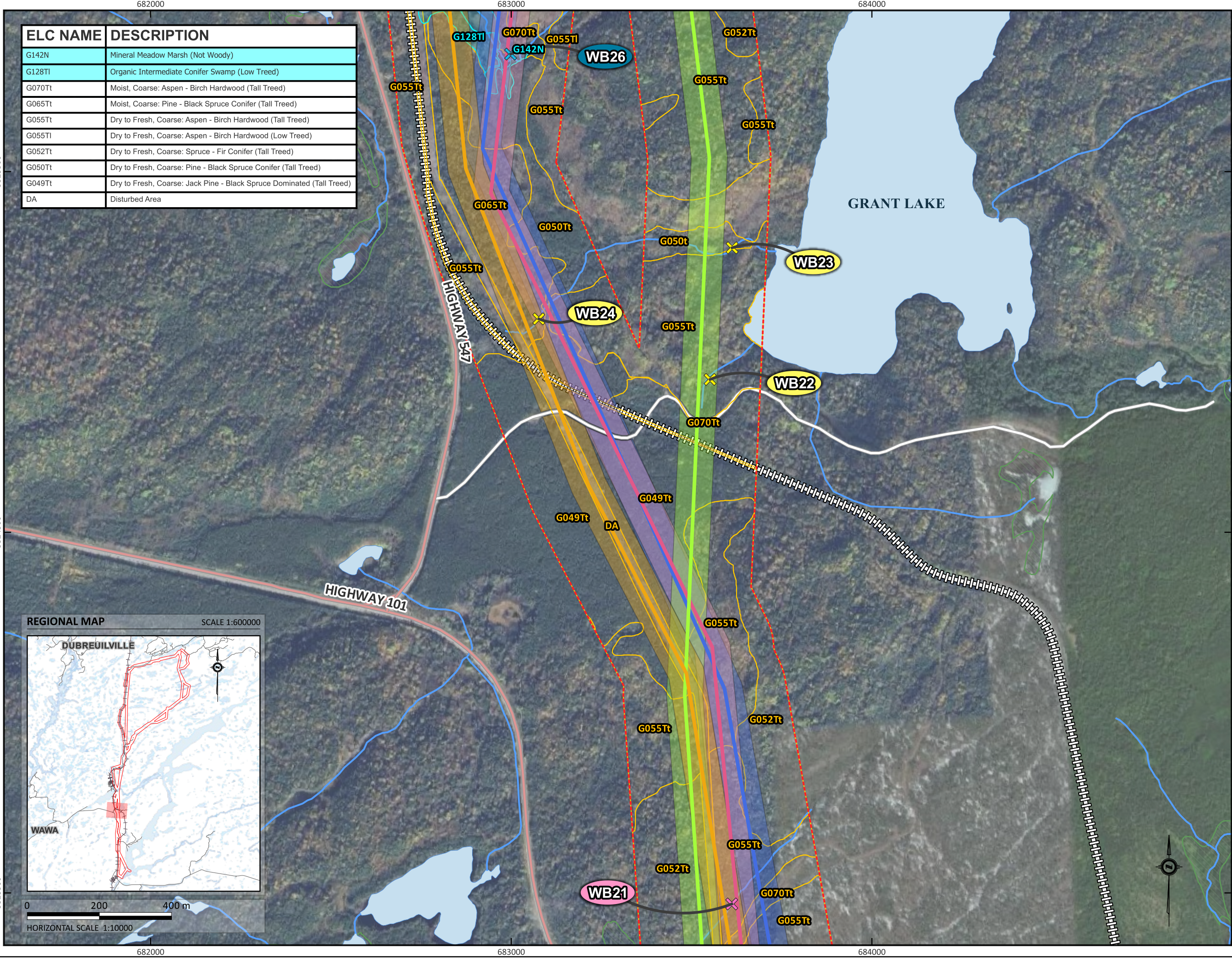
- Upland ELC Communities
- Wetland ELC Communities

Proposed Alternative Solutions

- Alternative Solution #1
- Alternative Solution #2
- Alternative Solution #3
- Alternative Solution #4

Potential Infrastructure Areas

- Infrastructure Area #1
- Infrastructure Area #2
- Infrastructure Area #3
- Infrastructure Area #4



REGIONAL MAP SCALE 1:600000

0 200 400 m
HORIZONTAL SCALE 1:10000



EXISTING CONDITIONS AND PROPOSED ROUTES

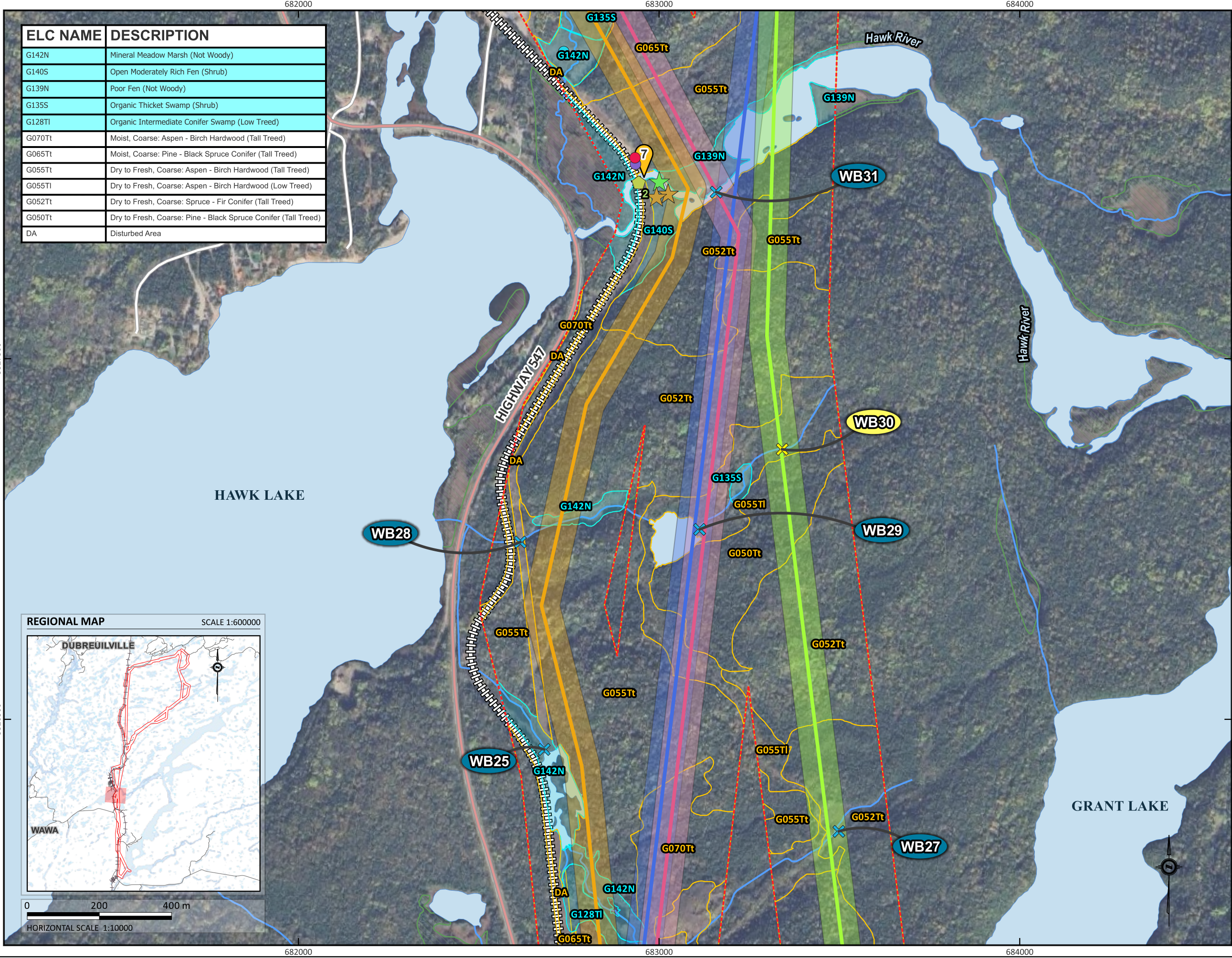
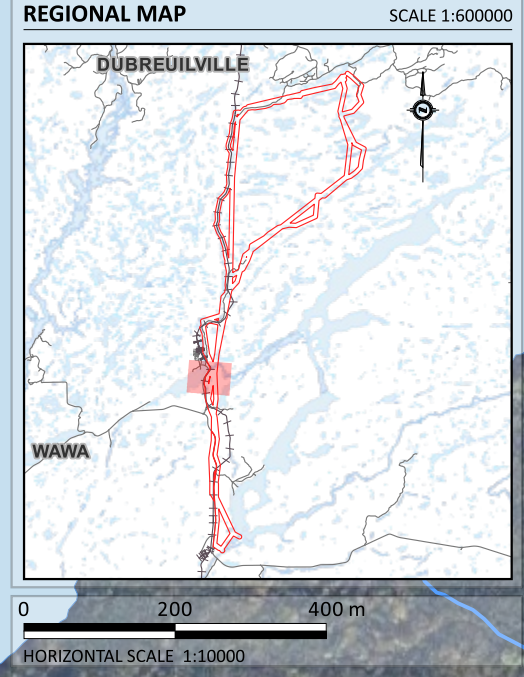
TRANSMISSION SYSTEM PROJECT
WAWA, ON

DATE ISSUED:	SEPTEMBER 2024	DRAWING NO.:	2-05
CREATED BY:	A.L.		
PROJECT NO.:	23-028		
BASE MAP:	MNRF		

File: Q:\23 Projects\23-028 Wawa Transmission Station Class EA (BPN)\04.0 - Drafting\23-028.dwg

ELC NAME	DESCRIPTION
G142N	Mineral Meadow Marsh (Not Woody)
G140S	Open Moderately Rich Fen (Shrub)
G139N	Poor Fen (Not Woody)
G135S	Organic Thicket Swamp (Shrub)
G128TI	Organic Intermediate Conifer Swamp (Low Treed)
G070Tt	Moist, Coarse: Aspen - Birch Hardwood (Tall Treed)
G065Tt	Moist, Coarse: Pine - Black Spruce Conifer (Tall Treed)
G055Tt	Dry to Fresh, Coarse: Aspen - Birch Hardwood (Tall Treed)
G055TI	Dry to Fresh, Coarse: Aspen - Birch Hardwood (Low Treed)
G052Tt	Dry to Fresh, Coarse: Spruce - Fir Conifer (Tall Treed)
G050Tt	Dry to Fresh, Coarse: Pine - Black Spruce Conifer (Tall Treed)
DA	Disturbed Area

- LEGEND**
- Study Area
 - Mapped Watercourse
 - Waterbody
 - Unevaluated Wetland
 - Rail
- Waterbody Crossings - Fish Habitat & Thermal Regime**
- X Direct Coldwater
 - X Indirect Coldwater
- ELC Communities**
- Upland ELC Communities
 - Wetland ELC Communities
- Proposed Alternative Solutions**
- Alternative Solution #1
 - Alternative Solution #2
 - Alternative Solution #3
 - Alternative Solution #4
- Potential Infrastructure Areas**
- Infrastructure Area #1
 - Infrastructure Area #2
 - Infrastructure Area #3
 - Infrastructure Area #4
 - 2024 Dawn Breeding Bird Survey Location Only
 - Turtle Survey
- Direct Wildlife Observations - i.e., Visual or Auditory Confirmation**
- ★ Chorus Frog
 - ★ Spring Peeper
- Indirect Wildlife Observations - i.e., Tracks, Scat, Beaver Lodges**
- Beaver
 - Moose
 - Wolf



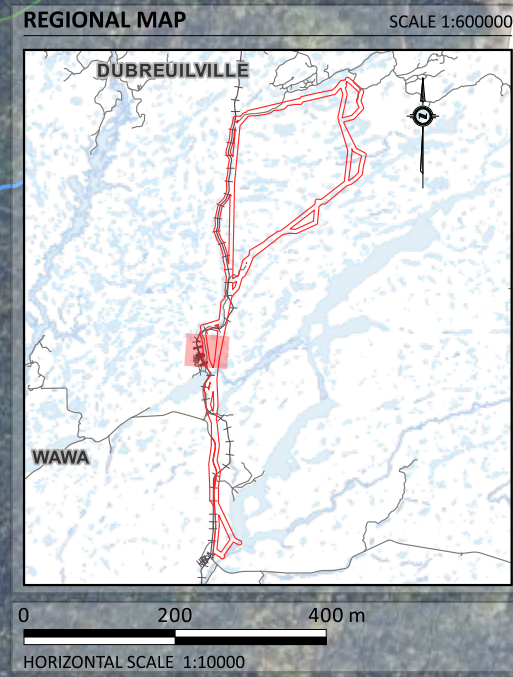
EXISTING CONDITIONS AND PROPOSED ROUTES

TRANSMISSION SYSTEM PROJECT
WAWA, ON

DATE ISSUED:	SEPTEMBER 2024	DRAWING NO.:	2-06
CREATED BY:	A.L.		
PROJECT NO.:	23-028		
BASE MAP:	MNRF		

File: Q:\23 Projects\23-028 Wawa Transmission Station Class EA (BPN)\04.0 - Drafting\23-028.dwg

ELC NAME	DESCRIPTION
Open Water	Open Water
G142N	Mineral Meadow Marsh (Not Woody)
G136Tt	Sparse Treed Fen (Low Treed)
G135S	Organic Thicket Swamp (Shrub)
G134S	Mineral Thicket Swamp (Shrub)
G128Tt	Organic Intermediate Conifer Swamp (Tall Treed)
G127Tt	Organic Poor Conifer Swamp (Tall Treed)
G114Tt	Moist, Fine: Pine - Black Spruce (Tall Treed)
G070Tt	Moist, Coarse: Aspen - Birch Hardwood (Tall Treed)
G065Tt	Moist, Coarse: Pine - Black Spruce Conifer (Tall Treed)
G055Tt	Dry to Fresh, Coarse: Aspen - Birch Hardwood (Tall Treed)
G052Tt	Dry to Fresh, Coarse: Spruce - Fir Conifer (Tall Treed)
G049Tt	Dry to Fresh, Coarse: Jack Pine - Black Spruce Dominated (Tall Treed)
G034Tt	Dry, Sandy: Jack Pine - Black Spruce Dominated (Tall Treed)
DA	Disturbed Area



LEGEND

- Study Area
- Mapped Watercourse
- Waterbody
- Unevaluated Wetland
- Rail

Waterbody Crossings - Fish Habitat & Thermal Regime

- Direct Coldwater
- Indirect Coldwater

ELC Communities

- Upland ELC Communities
- Wetland ELC Communities

Proposed Alternative Solutions

- Alternative Solution #1
- Alternative Solution #2
- Alternative Solution #3
- Alternative Solution #4

Potential Infrastructure Areas

- Infrastructure Area #1
- Infrastructure Area #2
- Infrastructure Area #3
- Infrastructure Area #4

Wildlife Observations

- Wildlife Camera Location
- Turtle Survey

Direct Wildlife Observations - i.e., Visual or Auditory Confirmation

- Chorus Frog
- Pine Grosbeak
- Spring Peeper

Indirect Wildlife Observations - i.e., Tracks, Scat, Beaver Lodges

- Canada Lynx

AZIMUTH ENVIRONMENTAL CONSULTING, INC.
ENVIRONMENTAL ASSESSMENTS & APPROVALS

EXISTING CONDITIONS AND PROPOSED ROUTES

TRANSMISSION SYSTEM PROJECT
WAWA, ON

DATE ISSUED:	SEPTEMBER 2024	DRAWING NO.:	2-07
CREATED BY:	A.L.		
PROJECT NO.:	23-028		
BASE MAP:	MNRF		

File: Q:\23 Projects\23-028 Wawa Transmission Station Class EA (BPN)\04.0 - Drafting\23-028.dwg