

## **CEIRM Attachment 2 to EB-2007-0673 Consultation**

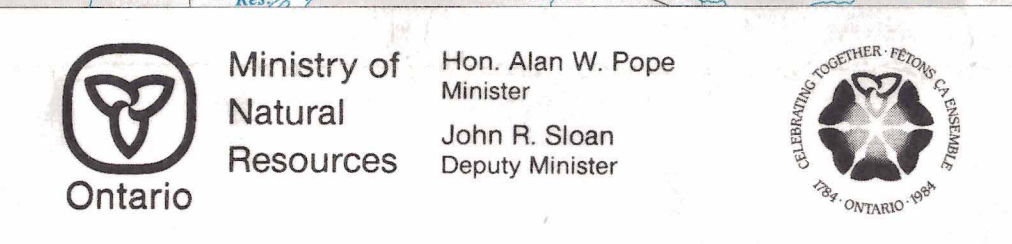
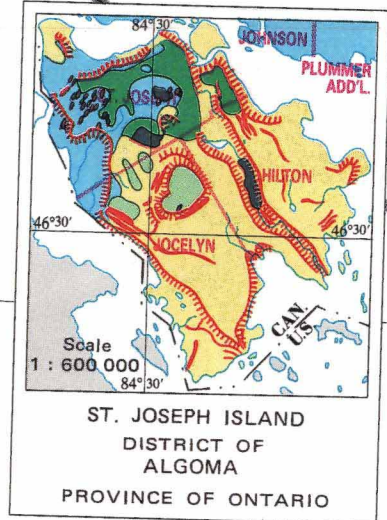
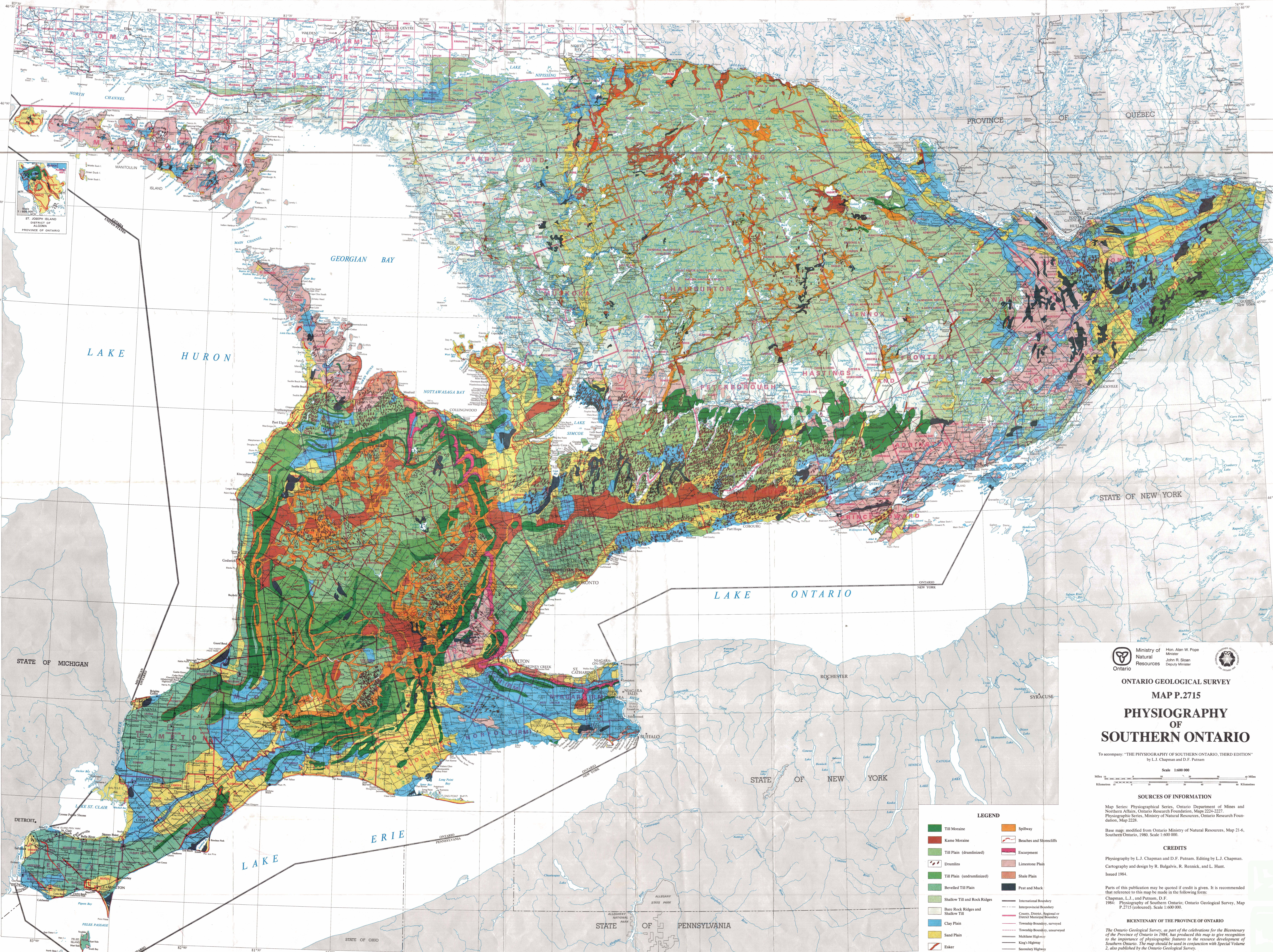
**December 15, 2008**

*Physiography of Southern Ontario* [map]

(Ontario Geological Survey Map P. 2715, 1984).

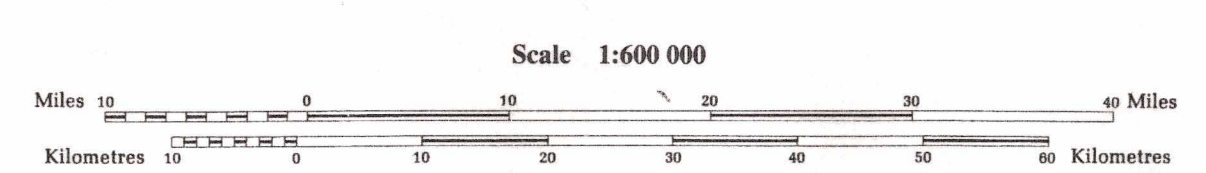
(See next page)





ONTARIO GEOLOGICAL SURVEY  
MAP P.2715  
**PHYSIOGRAPHY  
OF  
SOUTHERN ONTARIO**

To accompany: "THE PHYSIOGRAPHY OF SOUTHERN ONTARIO, THIRD EDITION"  
by L.J. Chapman and D.F. Putnam



SOURCES OF INFORMATION

Map Series: Physiographical Series, Ontario Department of Mines and Northern Affairs, Ontario Research Foundation, Maps 2224-2227.  
Physiographic Series, Ministry of Natural Resources, Ontario Research Foundation, Map 2228.  
Base map: modified from Ontario Ministry of Natural Resources, Map 21-6, Southern Ontario, 1980, Scale 1:600 000.

CREDITS

Physiography by L.J. Chapman and D.F. Putnam. Editing by L.J. Chapman.  
Cartography and design by R. Balgavics, R. Rennick, and L. Hunt.  
Issued 1984.

Parts of this publication may be quoted if credit is given. It is recommended that reference to this map be made in the following form:  
Chapman, L.J., and Putnam, D.F.  
1984: Physiography of Southern Ontario, Ontario Geological Survey, Map P.2715 (coloured), Scale 1:600 000.

BICENTENARY OF THE PROVINCE OF ONTARIO

The Ontario Geological Survey, as part of the celebrations for the Bicentenary of the Province of Ontario in 1984, has produced this map to give recognition to the importance of physiographic features to the resource development of Southern Ontario. The map should be used in conjunction with Special Volume 2, also published by the Ontario Geological Survey.

- LEGEND**
- |                                   |   |
|-----------------------------------|---|
| Till Moraine                      | Spillway  |
| Kame Moraine                      | Beaches and Shorecliffs                                   |
| Till Plain (drumlinized)          | Escarpment  |
| Drumlins                          | Limestone Plain   |
| Till Plain (undrumlinized)        | Shale Plain   |
| Develled Till Plain               | Peat and Muck   |
| Shallow Till and Rock Ridges      | International Boundary                                    |
| Bare Rock Ridges and Shallow Till | Interprovincial Boundary                                  |
| Clay Plain                        | County, District, Regional or District Municipal Boundary |
| Sand Plain                        | Township Boundary, surveyed                               |
| Esker                             | Township Boundary, unsurveyed                             |
|                                   | Multilane Highway   |
|                                   | King's Highway  |
|                                   | Secondary Highway   |