

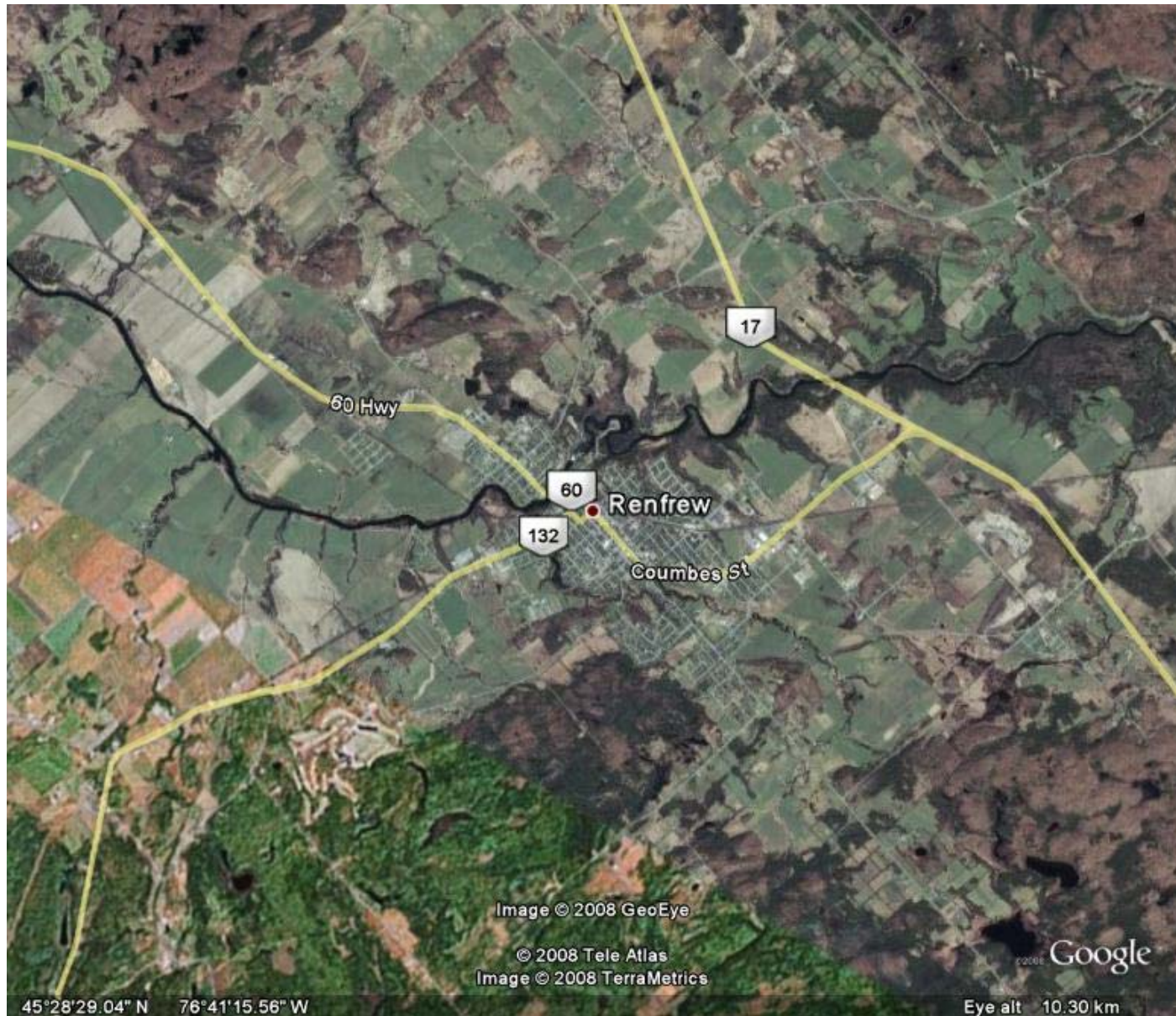
CEIRM Attachment 4 to EB-2007-0673 Consultation

December 15, 2008

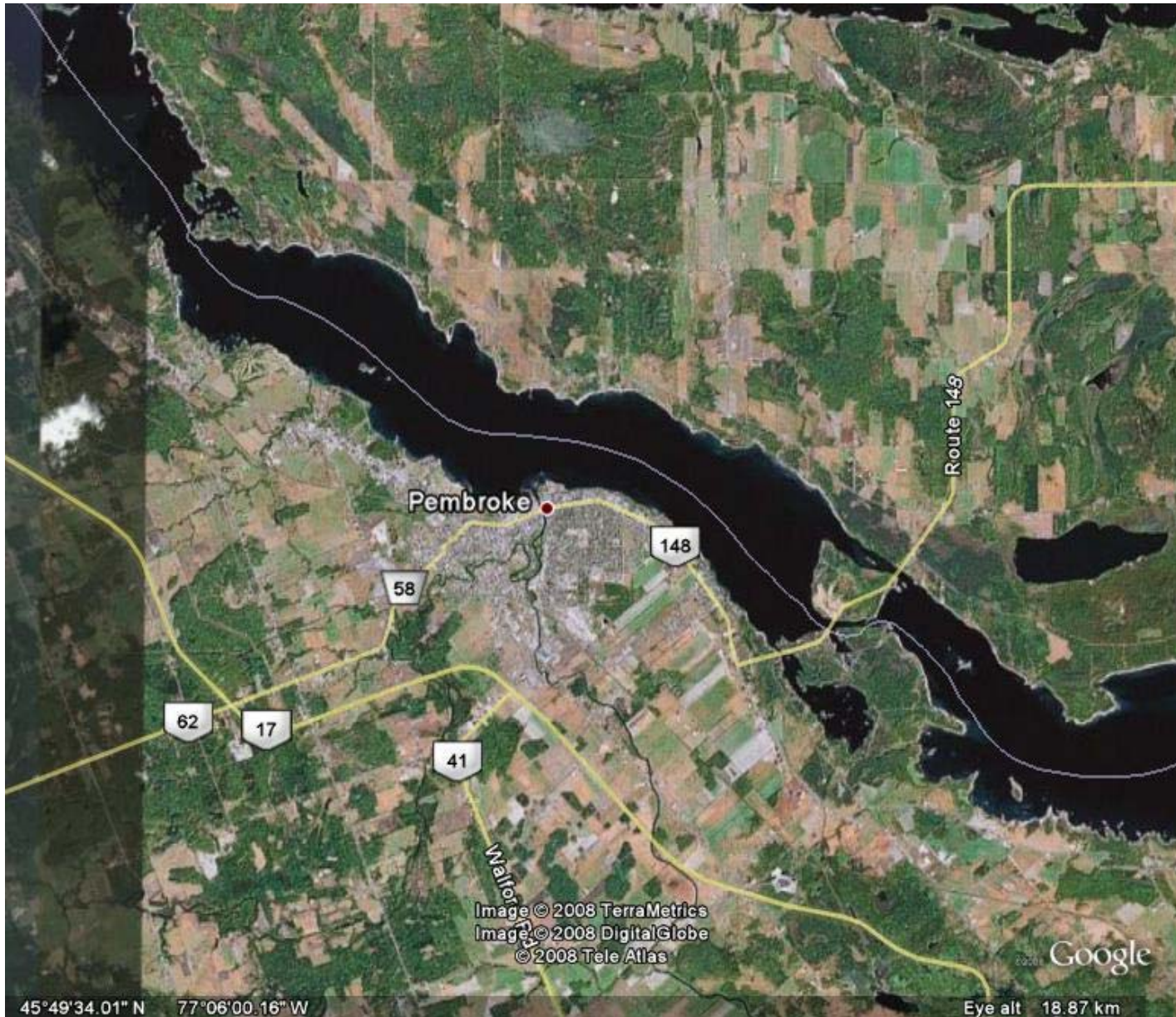
## **Google Earth Images**

- Renfrew Hydro service area – Renfrew
- Ottawa River Power service area –  
Pembroke, Almonte, Beachburg and Killaloe
- Northern Ontario Wires service area –  
Cochrane, Kapuskasing and Iroquois Falls
- Hearst Power service area – Hearst

# Renfrew Hydro - Renfrew



# Ottawa River Power - Pembroke



# Ottawa River Power - Almonte

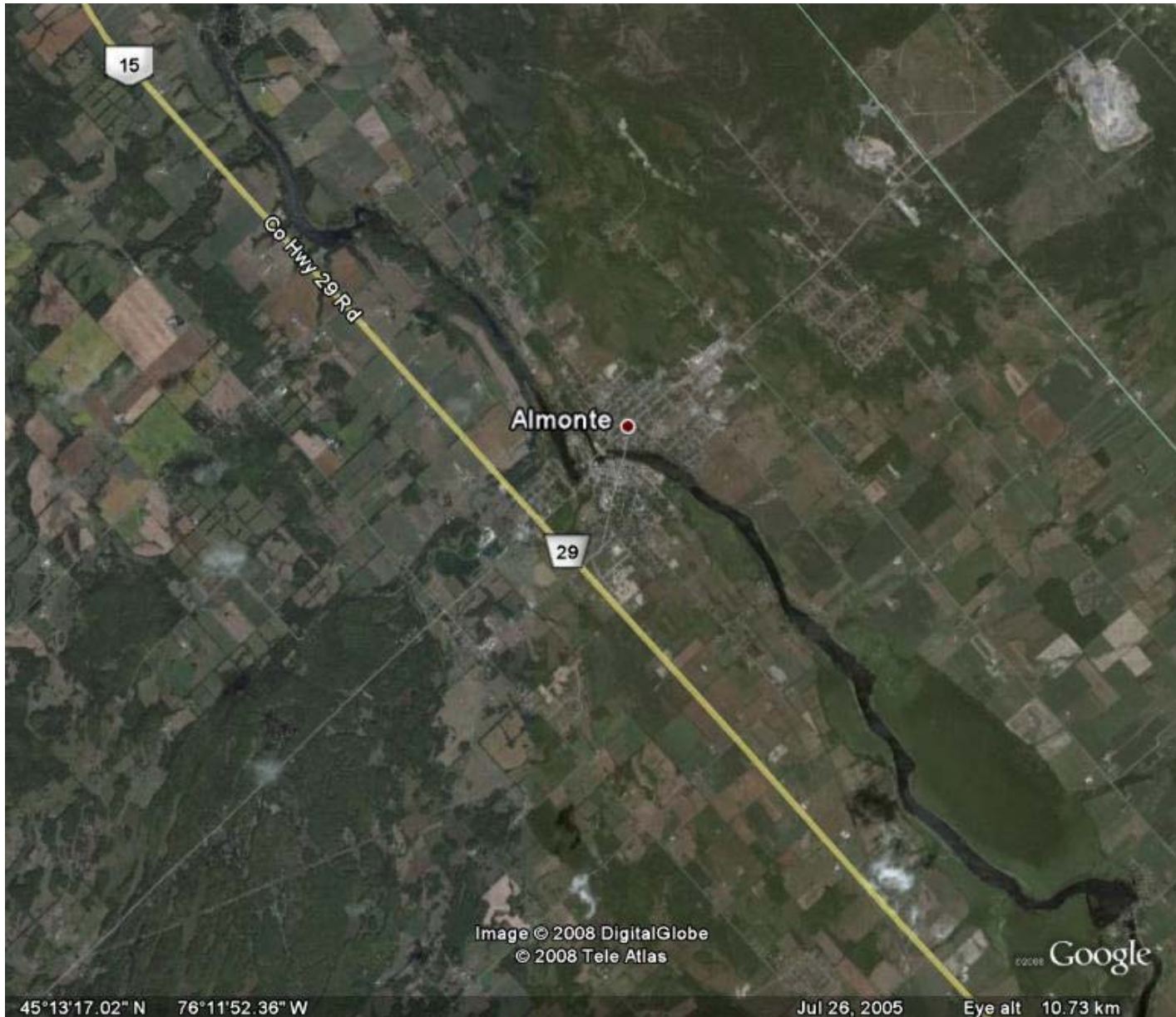


Image © 2008 DigitalGlobe  
© 2008 Tele Atlas

Google

45°13'17.02" N 76°11'52.36" W

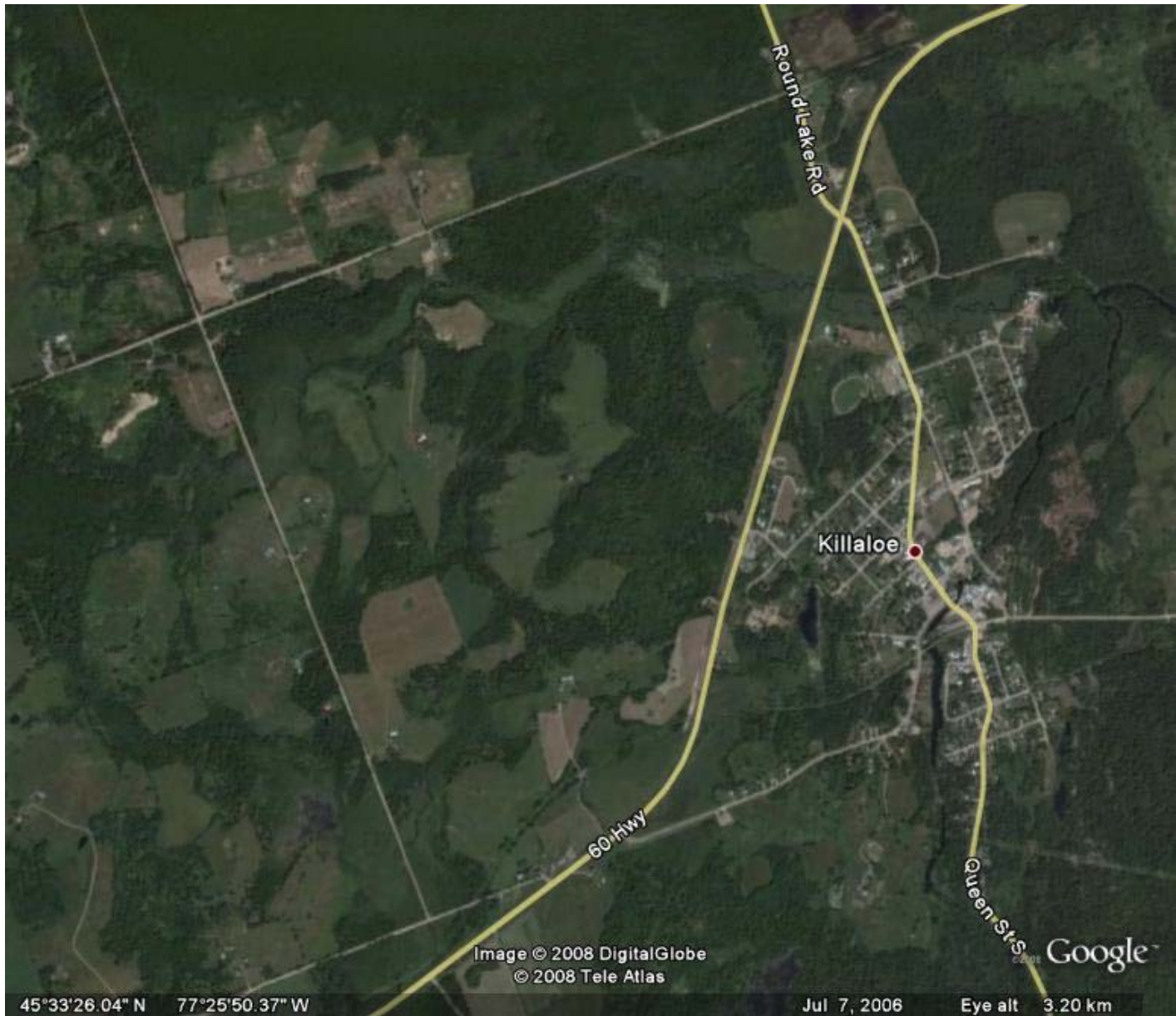
Jul 26, 2005

Eye alt 10.73 km

# Ottawa River Power - Beachburg



# Ottawa River Power - Killaloe



# Northern Ontario Wires - Cochrane

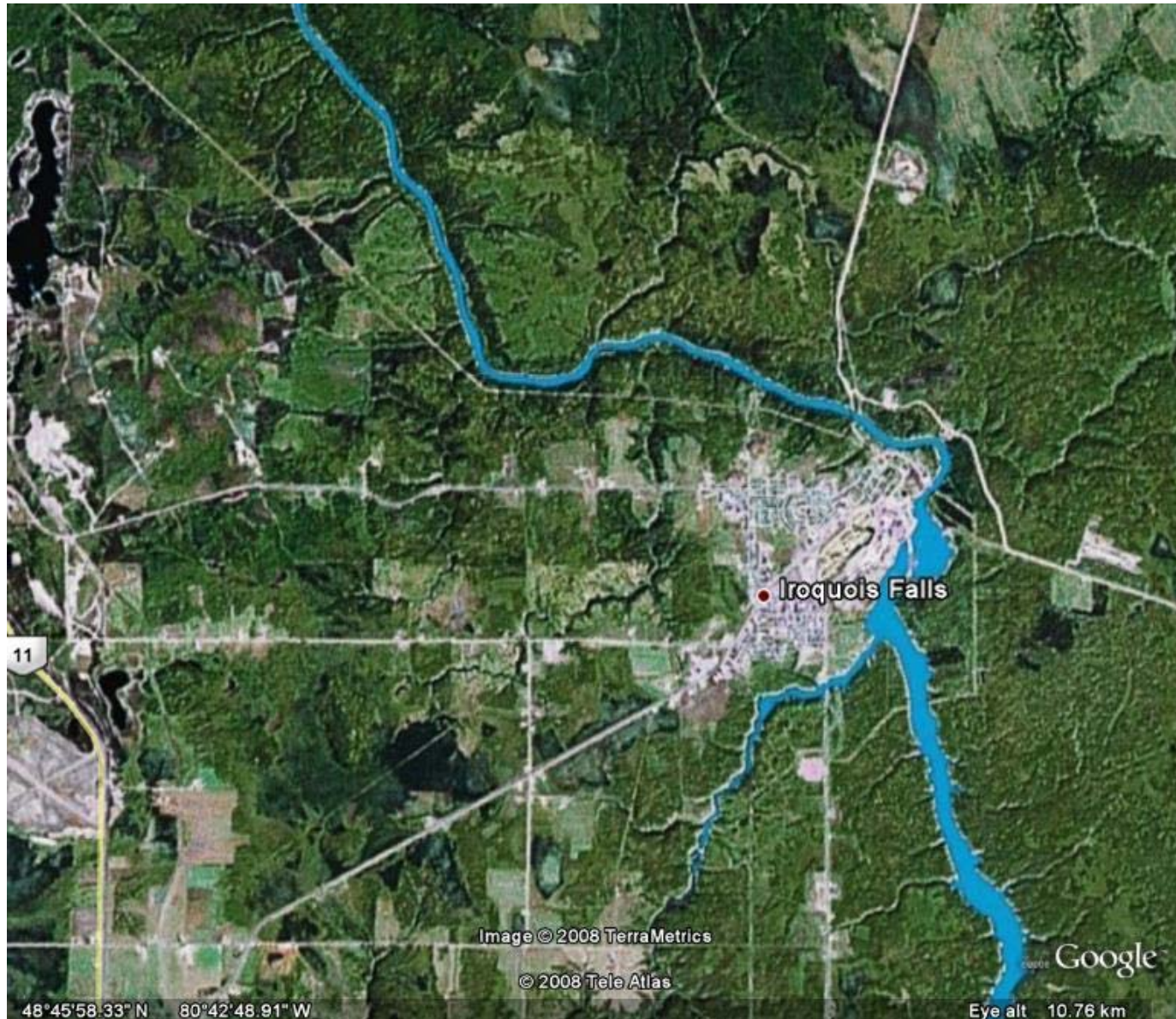


# Northern Ontario Wires - Kapuskasing





# Northern Ontario Wires - Iroquois Falls



# Hearst Power - Hearst

